



GIUGIARO
DESIGN

Actuatech s.r.l.

Via Fratelli Capponi, 126/128 - 25068 Sarezzo (BS) Italy
Tel. +39.030.8908142 - Fax +39.030.8908143
mail: actuatech@actuatech.com
www.actuatech.com

ACTUATECH
ACTUATOR TECHNOLOGY

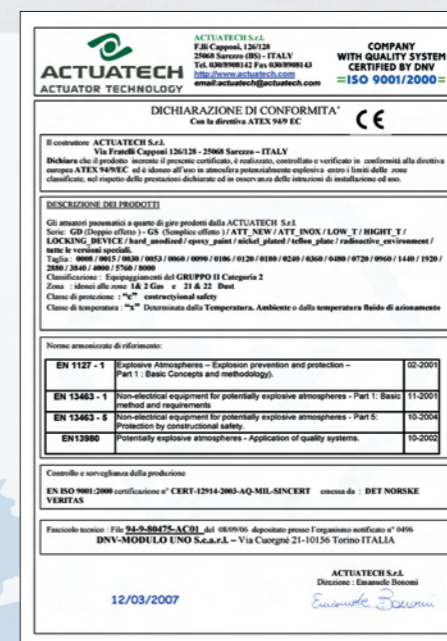
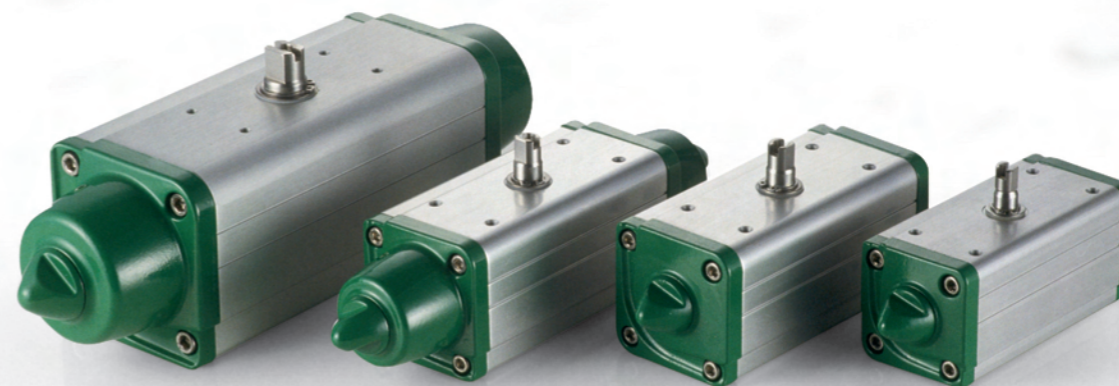


MADE IN ITALY

The Company is located in Sarezzo, in the heart of the well known Valtrompia valley famous since the Roman Empire for its skill in steel work and today, the Italian hub for Aluminum, Brass and Steel production.

Actuatech Srl. is the final goal of a third generation Family with more than fifty years experience within the valve and automation industry, conceived as a production company dedicated to high quality part turn actuators fully in compliance with the latest international standards and technology.

The Actuatech Srl. actuator range has been designed with the first consideration being reliability on long automation service and as such, all components are manufactured in house. All the CNC machines are served with auto-arms for parts load and unload as well as online testing. The data is taken under the control of a Computers Net System.



The Quality System is completed with an inspection program performed by the onsite operator through registered tools and measuring equipment, and double checked in the Quality department by means of a computerized 3D touch-testing machine program.

Actuatech Srl. production is addressed to the Valve Manufacturers and plant automation Specialists, the Company has a global presence, providing high quality products and support with an on time delivery service. For further commercial and technical information visit our website. Download data table and dimensional drawings. Use G-Size Program.



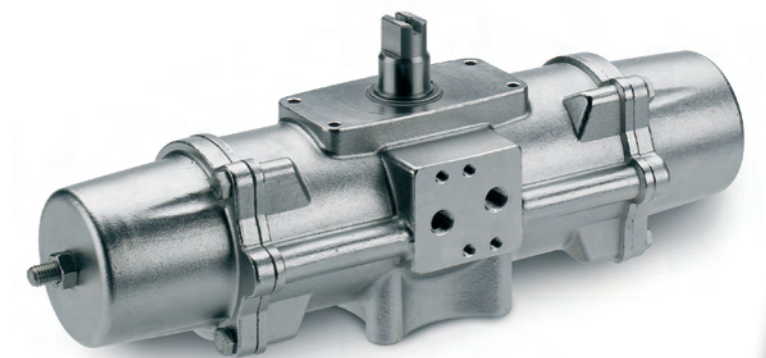
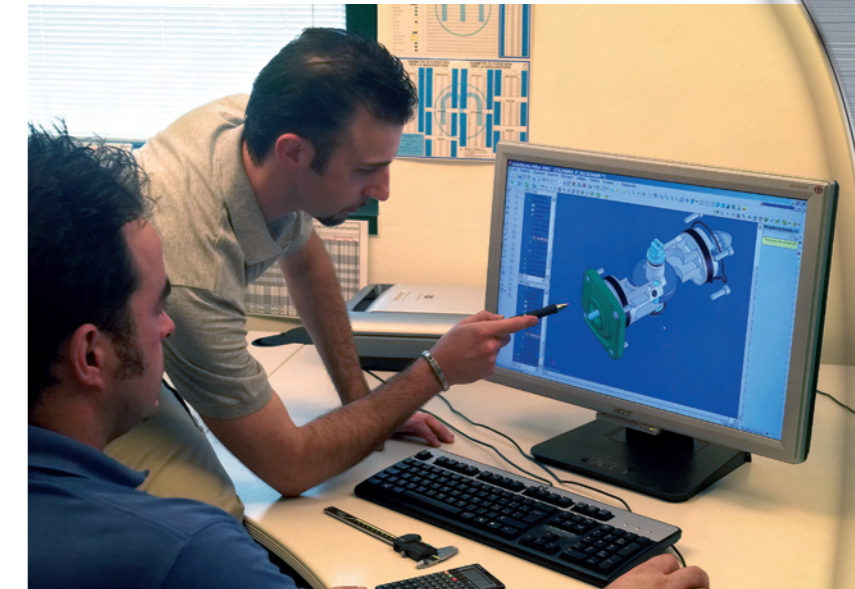
Production & Quality System

The Quality starts with an Actuator Feasibility Study, taking into account the application and suitability on the valve.

Actuatech Srl. Actuator offers the best technical performance in a modern and efficient "Italian Design"

Production within a Total Quality System is a nightmare to achieve if you have to adapt & interface old facilities into a completely new Quality Control Program. To achieve this objective, the Actuatech company was founded in 2001 and the dream of production within a total quality system became a reality.

Actuatech benefits from 25 years experience of actuator production which has been transferred into a substantial new industrial investment.



On-site quality inspection and program control for the computerized machinery is carried-out by Specialized Personnel via certified instruments in accordance with the Quality Checking Program.

Actuatech Srl. Technical Laboratory is equipped with the latest computerized testing machinery, double checking all the products and storing the reports for 5 years in the Quality System for traceability.

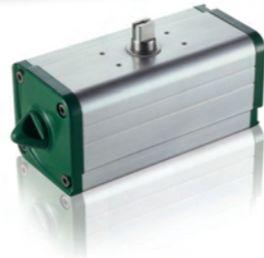
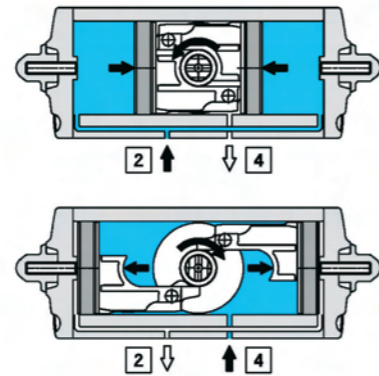
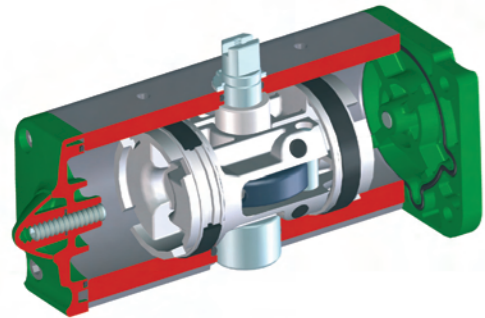
All the actuators components are stored in the Actuatech warehouse under the control of a F.I.F.O. System, ensuring efficient stock rotation. Every day actuators are randomly selected and submitted to endurance testing and wearing parts inspection.



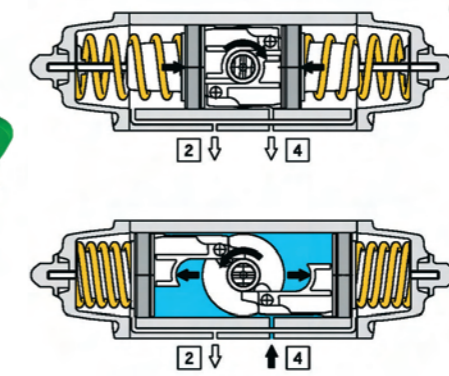
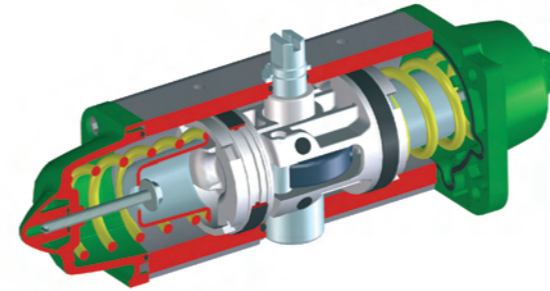
THE PRODUCT



Double Acting for valve open and close operation and Cycle Regulation.



Simple Acting for valve open and close operation and Fail Safe emergency.



ACTUATOR SIZE	NOMINAL TORQUE Nm at 5,6 Bar	ISO FLANGE	A	B	C - depth	D - depth	E - depth	Number of screws	X / 2	Air Consumption l/cycle
GD08	8	F03	36	-	M5 - 8	-	9 - 10	4	45°	0,034
GD15	15	F03	36	-	M5 - 8	-	11 - 13	4	45°	0,08
		F04	42	-	M5 - 8	-				
GD30	30	F03 - F05	36	50	M5 - 8	M6 - 9	11 - 13	4	45°	0,15
		F04	42	-	M5 - 8	-				
GD60	60	F04	42	-	M5 - 8	-	14 - 16	4	45°	0,30
		F05 - F07	50	70	M6 - 9	M8 - 12				
GD106	106	F05 - F07	50	70	M6 - 9	M8 - 12	17 - 19	4	45°	0,55
GD180	180	F07 - F10	70	102	M8 - 12	M10 - 15	22 - 24	4	45°	0,95
GD240	240	F07 - F10	70	102	M8 - 12	M10 - 15	22 - 24	4	45°	1,3
GD360	360	F07 - F10	70	102	M8 - 12	M10 - 15	22 - 24	4	45°	1,8
GD480	480	F10 - F12	102	125	M10 - 15	M12 - 18	27 - 29	4	45°	2,6
GD720	720	F10 - F12	102	125	M10 - 15	M12 - 18	27 - 29	4	45°	3,5
		F12	125	-	M12 - 18	-				
GD960	960	F14	140	-	M16 - 24	-	36 - 38	4	45°	4,9
		F12	125	-	M12 - 18	-				
GD1440	1440	F14	140	-	M16 - 24	-	36 - 38	4	45°	7,6
		F12 - F16	125	165	M12 - 18	M20 - 30				
GD1920	1920	F14	140	-	M16 - 24	-	46 - 48	4	45°	10,2
GD2880	2880	F16	165	-	M20 - 30	-	46 - 48	4	45°	20,0
GD3840	3840	F16	165	-	M20 - 30	-	46 - 48	4	45°	24,3
GD5760	5760	F25	254	-	M16 - 24	-	55 - 58	8	22,5°	38,0
GD8000	8000	F25	254	-	M16 - 24	-	55 - 58	8	22,5°	50,0



ACTUATOR SIZE	NOMINAL TORQUE Nm at 5,6 Bar	ISO FLANGE	A	B	C - depth	D - depth	E - depth	Number of screws	X / 2	Air Consumption l/cycle
GS15	15	F03 - F05	36	50	M5 - 8	M6 - 9	11 - 13	4	45°	0,09
		F04	42	-	M5 - 8	-				
GS30	30	F04	42	-	M5 - 8	-	14 - 16	4	45°	0,17
		F05 - F07	50	70	M6 - 9	M8 - 12				
GS53	53	F05 - F07	50	70	M6 - 9	M8 - 12	17 - 19	4	45°	0,30
GS90	90	F07 - F10	70	102	M8 - 12	M10 - 15	22 - 24	4	45°	0,55
GS120	120	F07 - F10	70	102	M8 - 12	M10 - 15	22 - 24	4	45°	0,80
GS180	180	F07 - F10	70	102	M8 - 12	M10 - 15	22 - 24	4	45°	1,0
GS240	240	F10 - F12	102	125	M10 - 15	M12 - 18	27 - 29	4	45°	1,5
GS360	360	F10 - F12	102	125	M10 - 15	M12 - 18	27 - 29	4	45°	2,0
		F12	125	-	M12 - 18	-				
GS480	480	F14	140	-	M16 - 24	-	36 - 38	4	45°	2,8
		F12	125	-	M12 - 18	-				
GS720	720	F14	140	-	M16 - 24	-	36 - 38	4	45°	4,2
		F12 - F16	125	165	M12 - 18	M20 - 30				
GS960	960	F14	140	-	M16 - 24	-	46 - 48	4	45°	5,9
		F16	165	-	M20 - 30	-				
GS1440	1440	F16	165	-	M20 - 30	-	46 - 48	4	45°	11,0
GS1920	1920	F16	165	-	M20 - 30	-	46 - 48	4	45°	12,5
GS2880	2880	F16	165	-	M20 - 30	-	46 - 48	4	45°	21,0
GS4000	4000	F25	254	-	M16 - 24	-	55 - 58	8	22,5°	29,1

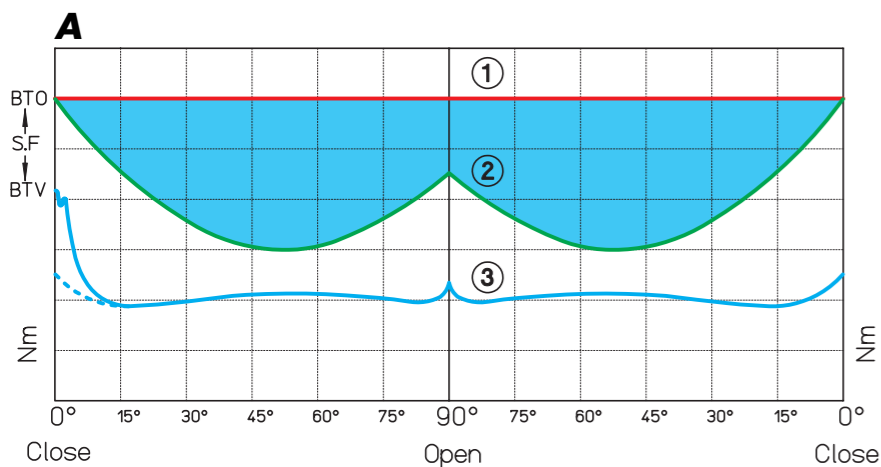


Scotch Yoke System: a technical choice.

Actuatech Scotch Yoke 5° Off-Set transforms the motive energy supplied to the pistons in a Canted rotary torque with an high start torque, a lower run torque and a final increased closing torque. This canted torque matches the part turn valves torque requirement (such as ball and butterfly valves) that have a similar torque development curve during its cycle.

Fail to close: Safety First.

The canted Scotch Yoke Spring Return Actuator sealing torque increase ensures a positive valve closing with its final push.

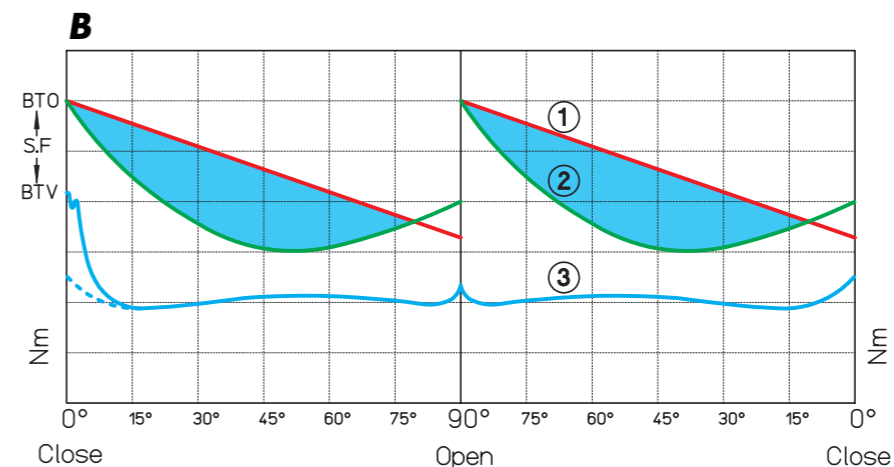


Energy Saving System

The two diagrams, A double acting and B spring return, show the torques development during the valve cycle from open to close and open again.

1: Rack & Pinion flat torque, 2: Scotch Yoke canted torque, 3: represent the typical valve torque. The blue area between the Rack & Pinion and Scotch Yoke diagrams shows the Motive Energy Saving, easily verified comparing the compressed air consumption stated in our data table and any Rack & Pinion manufacturer.

BTV: Break Torque Valve, BTO: Break Torque Open
S.F.: Safety Factor



Stainless steel actuators

Double Acting pneumatic actuator "GD" type AISI 316



ACTUATOR SIZE	NOMINAL TORQUE Nm at 5,6 Bar	ISO FLANGE	SQUARE
GD15	15	F03	9
GD30	30	F03	9
GD60	60	F03 - F05	11
GD120	120	F05 - F07	14
GD240	240	F05 - F07	17
GD480	480	F07 - F10	22

Spring return pneumatic actuator "GS" type AISI 316

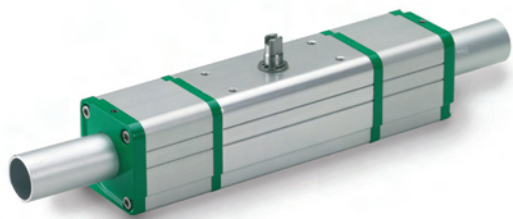


ACTUATOR SIZE	NOMINAL TORQUE Nm at 5,6 Bar	ISO FLANGE	SQUARE
GS15	15	F03	9
GS30	30	F03 - F05	11
GS60	60	F05 - F07	14
GS120	120	F05 - F07	17
GS240	240	F07 - F10	22

Dosing 3 positions

USE: Filling and dosing of fluids or half solids materials by means of a special metering device. Double acting actuator for fine or rough dosing.

CONSTRUCTION: The basic model consists of an Actuatech double acting actuator, equipped with two additional cylinders whose inner-pistons, by means of a stroke adjustment device, stop the rotating angle of the actuator to a pre-set position, preventing it from a complete rotation. Thanks to stroke adjustment device, the desired metering can range from 0° to 45°.



ACTUATOR SIZE	NOMINAL TORQUE Nm at 5,6 Bar	ISO FLANGE	SQUARE
GDD30	30	F03 - F05 F04	11
GDD60	60	F04 F05 - F07	14
GDD106	106	F05 - F07	17
GDD240	240	F07 - F10	22
GDD480	480	F10 - F12	27

WORKING SYSTEM:

A. Fully closed position

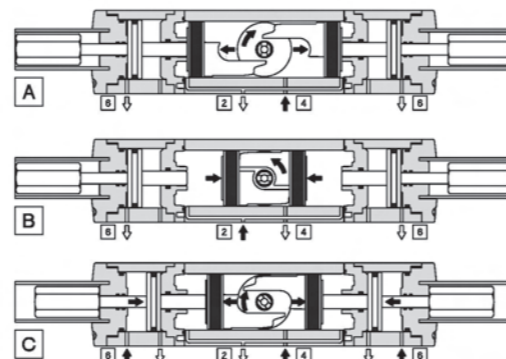
In this position the air is supplied to port 4 with exhaust air at port 2 and 6.

B. Fully open position

(90° rough metering) In this position the air is supplied to port 2 with exhaust air at port 4 and 6.

C. Intermediate position

(fine metering) In this position the air is supplied to port 6 than to port 4, with exhaust air at port 2. In this case the external pistons will move to the desired rotating angle, consequently reducing the total valve flow.



Special coatings

Ptfe



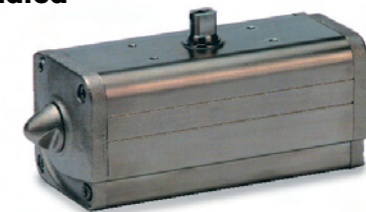
Hard Anodized



Epoxy



Nickel Plated

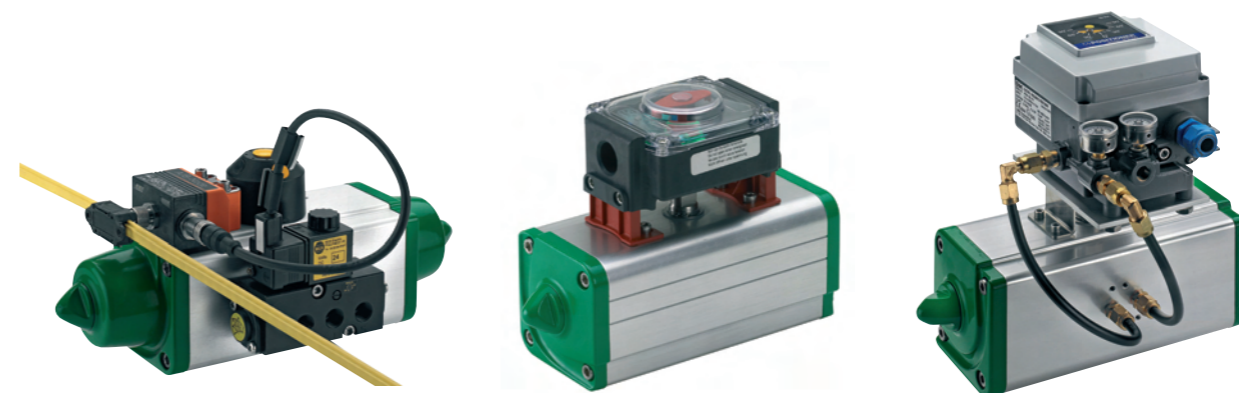


Accessories and Service

The actuator design has taken into consideration mounting pad connections conforming to the latest international standards for easy and direct assemblage onto valves and ancillaries. Actuatech completes its service with customized mounting kits and adaptors.



Actuatech Actuator pads interface with a wide range of Instrumentation and Control systems, Switches, Positioners and BUS protocols for delivering high speed communication for industrial automation and control.



THE APPLICATIONS

