



뛰어난 품질과 다양한 규격의 플라스틱 밸브

THERMOPLASTIC VALVE

the related products-pipes, fittings

UPVC, PP, CPVC, PPG and PVDF



Acid Proof
Alkali Proof



THE HI-TECH'S, HI-QUALITY'S PRODUCTS RANGE



주식회사 엠엠피

(Modern Maintenance Products Co.,Ltd)

COMPANY INTRODUCTION

회사소개

1991년 설립된 (주)엠엠피코리아는 Thermoplastic Total Solution을 모토로 플라스틱 배관재 분야에서 소비자의 요구에 부응하기 위하여 최선을 다해 왔습니다.

1997년 SHIE-YU Maker의 한국 총 대리점으로 영업한 이래 반도체공장, 폐수처리장, R/O 설비, Chemical 약품배관, 제철분야, 조선분야, 플랜트분야, 바이오 분야 등 산업체 모든 분야에서 완벽한 제품 라인과 다양한 재질의 밸브를 최고품질, 최저가격, 신속한 납기로 고객만족을 실현해 왔으며 앞으로도 최선을 다할 것을 약속 드립니다.

당사의 본사인 SHIE-YU사는 1973년에 설립된 이래 대만 최초의 열가소성 밸브 제조사로서, 밸브와 파이프를 전문적으로 생산해 왔으며, 30여 년 동안 첨단 기술 및 공정으로 제품 품질에 있어 항상 선두에서 리드해 왔습니다. 그 결과 전 세계 40개국 이상의 나라에 수출되고 있는 제품들은 광범위하게 사용되고 다양한 배관 시스템에 적용되어 신뢰도 있는 공급자로서의 명성을 얻게 되었습니다.

또한 고객들의 요구를 충족시켜 드리기 위해 지속적으로 다양한 사이즈에 대한 제품 라인을 확장 하고 UPVC, CPVC, PP, HD-PE, PVDF와 같은 새로운 재질을 개발하였으며 열가소성 밸브의 완비된 라인과 다양한 재질을 구축함으로써 세계 선두 제조사 중 하나가 되었으며, 앞으로 끊임없는 연구개발을 통해 다양한 규격 생산 및 품질 향상에 최선을 다할 것을 약속 드립니다.

(주)엠엠피코리아
대표이사 박경호 드림

◀ SHIE-YU본사 및 공장전경



열가소성 수지와 고무의 사용 가능 온도

PERMISSIBLE WORKING TEMPERATURE RANGE FOR THE THERMO PLASTICS & RUBBERS

재질약칭 (Abbreviation of Material)	재질 (Material)	최대허용온도 (Maximum Permissible Temperatures (°C))
UPVC	UNPLASTICIZED POLYVINYL CHLORIDE	0°~ 60°
CPVC	CHLORINATED POLYVINYL CHLORIDE	0°~ 90°
PP	POLYPROPYLENE	-20°~ 90°
PPG(FRTP)	FIBER GLASS FORTIFIED POLYPROPYLENE	-20°~ 100°
PVDF	POLYVINYLIDENE FLUORIDE	-40°~ 120°
PTFE	POLYTETRAFLUOROETHYLENE (TEFLON)	Under 260°
ABS	ACRYLONITRILE BUTADIENE STYRENE	Under 95°
FPM	FLUORINE RUBBER (VITON)	Under 180°
EPT(EPDM)	ETHYLENEPROPYLENE RUBBER	Under 90°
NBR	NITRILE RUBBER	Under 60°
CR	CHLOROPRENE RUBBER (NEOPRENE)	Under 80°
IIR	ISOBUTHYLENE ISOPREN RUBBER	Under 90°
CSM	CHLORINE SULPHONYL POLYETHYLENE (HYPALON)	Under 90°

열가소성 수지의 물성치

PHYSICAL PROPERTIES FOR THERMO PLASTICS

화학적 성질 (PROPERTIES)	단위 (Unit)	Test Method	UPVC	CPVC	PP	PVDF	PPG	PE-80	PE-100
Specific Gravity	g/cm3	ASTM D792	1.3-1.4	1.49	0.92	1.76-1.78	1.12	0.94	0.95
Tensile Strength	@yield	ASTM D638	478	518	280	530	850	180(min.)	250
	@break	ASTM D638	452	515	450	350	1500	320(min.)	600<
Modulus of Elasticity in tension	kg/cm2	ASTM D638	26900	25200	9700	25300	40600	8000	8000
Flexural Modulus	kg/cm2	ASTM D638	36900	38200	11200	22260	58000	8000	9000
Izod (23degree C)	kg/cm2	ASTM D256	14	32	13	6.5	12	10	17
Rockwall Hardness	R-Scale	ASTM D785	80	85	95	77	105	-	40
Deflection Temperature	°C	ASTM D648	66	103	110	147	165	64	65
NSF Potable water approved			YES	YES	YES	YES		YES	YES
Industry standard color			Dark Gray/White	Light Gray	Cream/Black	Natural		Black or Yellow	Black or Blue

INDEX

H I G H Q U A L I T Y P R O D U C T S



BALL VALVE

- 06 트루 유니온 볼밸브
(TRUE UNION BALL VALVE)
- 08 신형 트루 유니온 볼밸브 **NEW**
(TRUE UNION BALL VALVE)



FLANGE

- 09 트랜지션 플랜지
(TRANSITION FLANGE)



DIAPHRAGM VALVE

- 14 다이아후램밸브(플랜지식)
(DIAPHRAGM VALVE Flanged Type)
- 16 다이아후램밸브(유니온식)
(TRUE UNION DIAPHRAGM VALVE)



BUTTERFLY VALVE

- 18 버터플라이 밸브(레버식)
(BUTTERFLY VALVE Lever Handle Type)
- 20 버터플라이 밸브(기어식)
(BUTTERFLY VALVE Gear Oper.)
- 22 대구경 버터플라이 밸브
(SUPER LARGE SIZED BUTTERFLY VALVE)



UNION

- 10 유니온
(UNION)
- 11 신형 유니온 **NEW**
(UNION)



STRONG UNION BALL VALVE

- 12 스트롱 유니온 볼밸브
(STRONG UNION BALL VALVE)



CHECK VALVE

- 24 트루 유니온 볼체크 밸브
(TRUE UNION BALL CHECK VALVE)
- 26 스윙 체크 밸브
(SWING CHECK VALVE)
- 28 웨이퍼 체크 밸브
(WAFFER CHECK VALVE)
- 29 스프링부착 웨이퍼 체크 밸브
(WAFFER CHECK VALVE With Springs)



SEDIMENT STRAINERS

- 30 Y 스트레이너
(Y-SEDIMENT STRAINERS)
- 32 T 스트레이너
(T-TYPE SEDIMENT STRAINERS)

TRUE UNION (DOUBLE UNION) BALL VALVE

T H E R M O P L A S T I C V A L V E



CD Series 트루 유니온(더블 유니온) 볼밸브

- CD100 SOCKET / CD200 THREAD / CD300 FLANGE
- SIZE | 15A(1/2") - 100A(4")

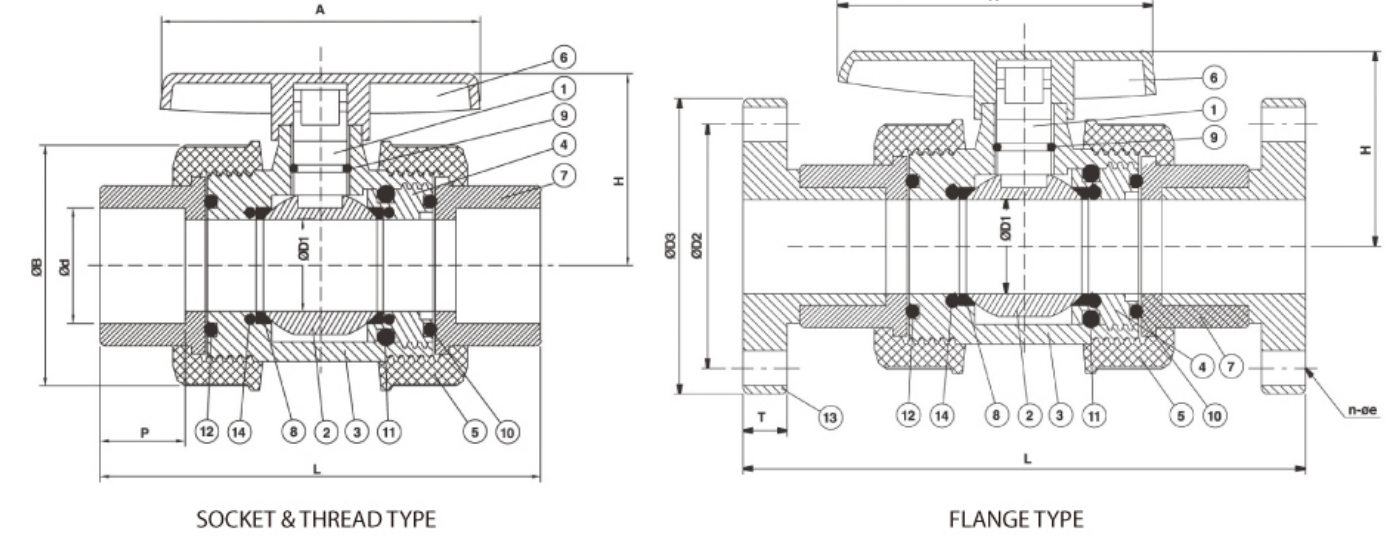
MATERIALS OF CONSTRUCTION

Item	Parts	Pcs	Materials	Item	Parts	Pcs	Materials
1	STEM	1	UPVC, PP, CPVC, PVDF	8	SEAT	2	PTFE
2	BALL	1	UPVC, PP, CPVC, PVDF	9	STEM O-RING	(1)..DN15-50 (2)..DN65-100	EPDM, VITON
3	BODY	1	UPVC, PP, CPVC, PVDF	10	SEAT CARRIER O-RING	1	EPDM, VITON
4	SEAT CARRIER	1	UPVC, PP, CPVC, PVDF	11	BODY O-RING	1	EPDM, VITON
5	UNION NUT	2	UPVC, PP, CPVC, PVDF	12	SOLID END O-RING	1	EPDM, VITON
6	HANDLE	1	ABS	13	FLANGE	2	UPVC, PP, CPVC, PVDF
7	END CONNECTOR	2	UPVC, PP, CPVC, PVDF				

DIMENSIONS TABLE

Unit : mm

Nom Size DN-inch	JIS															TestPress kgf/cm ²
	D1	D2	D3	d		øe	n	P	L			A	T	H	B	
				Socket	Thread				Socket	Thread	Flange					
15 (1/2")	15	70	95	22	PT1/2	15	4	22.2	113.3	113	151	82.5	15	61.0	47	15
20 (3/4")	20	75	100	26	PT3/4	15	4	25.4	132.0	131	171	101.0	15	64.0	61	15
25 (1")	25	90	125	32	PT1	19	4	28.6	146.5	146	190	111.0	17	65.0	70	15
32 (1-1/4")	38	100	135	38	PT1-1/4	19	4	31.8	170.0	186	212	111.0	17	89.0	93	15
40 (1-1/2")	38	105	140	48	PT1-1/2	19	4	34.9	184.8	186	232	128.3	17	88.7	93	15
50 (2")	48	120	155	60	PT2	19	4	38.1	200.0	197	245	152.5	20	108.5	113	15
65 (2-1/2")	65	140	175	76	PT2-1/2	19	4	44.5	228.0	228	282	190.0	20	140.0	150	10
80 (3")	78	150	185	89	PT3	19	8	47.6	270.0	270	330	230.0	23	165.0	184	10
100 (4")	102	175	210	114	PT4	19	8	57.2	324.0	324	385	274.0	23	172.0	226	10



DIMENSIONS TABLE

Unit : inch

Nom Size DN-inch	ANSI															TestPress lb/in ²
	D1	D2	D3	d		øe	n	P	L			A	T	H	B	
				Socket	Thread				Socket	Thread	Flange					
15 (1/2")	0.591	2.375	3.500	0.848	NPT1/2	0.625	4	0.875	4.461	4.448	5.944	3.248	0.590	2.402	1.850	222
20 (3/4")	0.780	2.750	3.875	1.058	NPT3/4	0.625	4	1.000	5.197	5.157	6.732	3.976	0.590	2.520	2.402	222
25 (1")	0.984	3.125	4.250	1.325	NPT1	0.625	4	1.125	5.786	5.748	7.480	4.331	0.669	2.559	2.755	222
32 (1-1/4")	1.496	3.500	4.625	1.670	NPT1-1/4	0.625	4	1.250	6.693	7.320	9.133	4.370	0.669	3.504	3.661	222
40 (1-1/2")	1.496	3.875	5.000	1.912	NPT1-1/2	0.625	4	1.375	7.276	7.320	9.133	5.051	0.700	3.799	3.661	222
50 (2")	1.890	4.750	6.000	2.387	NPT2	0.750	4	1.500	7.874	7.756	9.842	6.003	0.820	4.272	4.449	222
65 (2-1/2")	2.560	5.500	7.000	2.889	NPT2-1/2	0.750	4	1.750	8.976	8.976	11.102	7.480	0.787	5.512	5.905	148
80 (3")	3.071	6.000	7.500	3.515	NPT3	0.750	4	1.875	10.629	10.629	12.992	9.055	0.905	6.496	7.244	148
100 (4")	4.010	7.500	9.000	4.518	NPT4	0.750	8	2.250	12.755	12.755	15.157	10.787	0.905	6.772	8.897	148

Unit : mm

Nom Size DN-inch	DIN															TestPress kgf/cm ²
	D1	D2	D3	d		øe	n	P	L			A	T	H	B	
				Socket	Thread				Socket	Thread	Flange					
15 (1/2")	15	65	95	20	R1/2	14	4	16.0	113	113	151	82	15	61.0	47	15
20 (3/4")	20	75	105	25	R3/4	14	4	18.5	121	131	171	101	15	65.0	61	15
25 (1")	25	85	115	32	R1	14	4	22.0	146	146	190	110	17	70.0	70	15
32 (1-1/4")	38	100	140	40	R1-1/4	18	4	26.0	186	186	212	126	17	83.0	93	15
40 (1-1/2")	38	110	150	50	R1-1/2	18	4	31.0	186	186	232	126	17	88.7	93	15
50 (2")	48	125	165	63	R2	18	4	37.5	197	197	245	152	20	108.5	113	15
65 (2-1/2")	65	145	185	75	R2-1/2	18	4	43.5	228	228	282	190	20	140.0	150	10
80 (3")	78	160	200	90	R3	18	8	51.0	270	270	330	230	23	165.0	184	10
100 (4")	102	180	220	110	R4	18	8	61.0	324	324	385	274	23	172.0	226	10

* 밸브 차수는 PVC 재질기준 입니다. 테스트 압력은 PVC, PVDF 재질기준 입니다. PP 재질의 테스트 압력은 상기 표의 70%입니다.

NEW

TRUE UNION (DOUBLE UNION) BALL VALVE

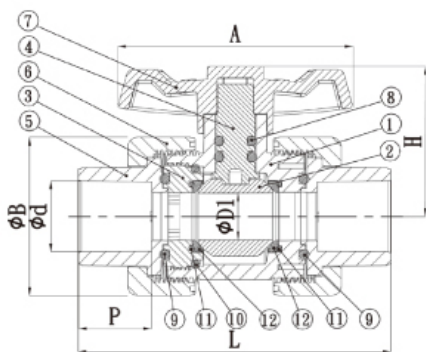


MATERIALS OF CONSTRUCTION

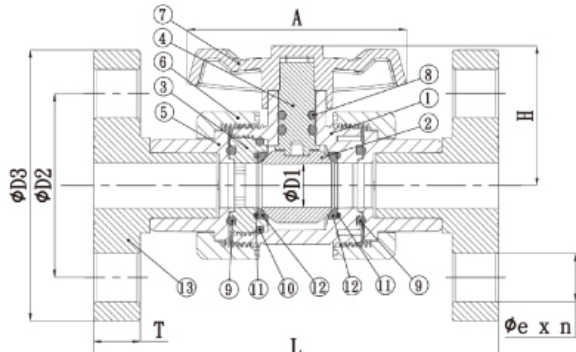
Item	Parts	Pcs	Materials	Item	Parts	Pcs	Materials
1	STEM	1	UPVC, CPVC	8	SEAT	2	TEFLON, CPVC
2	BALL	1	UPVC, CPVC	9	STEM O-RING	2	EPDM, VITON
3	BODY	1	UPVC, CPVC	10	END CONNECTOR O-RING	1	EPDM, VITON
4	SEAT CARRIER	1	UPVC, CPVC	11	SEAT CARRIER O-RING	1	EPDM, VITON
5	UNION NUT	2	UPVC, CPVC	12	SOLID END O-RING	1	EPDM, VITON
6	HANDLE	1	ABS	13	FLANGE	2	UPVC, CPVC
7	END CONNECTOR	2	UPVC, CPVC	14	BODY O-RING	2	EPDM, VITON

CK Series

신형 트루 유니온(더블유니온) 볼밸브



SOCKET & THREAD TYPE



FLANGE TYPE

DIMENSIONS TABLE

Unit : mm

Nom Size DN-inch	JIS														
	D1	D2	D3	d		øe	n	P	L			A	T	H	B
				Socket	Thread				Socket	Thread	Flange				
10 (3/8")	14	70	95	18	PT3/8	15	4	19	88	88	133	72	15	46	48
15 (1/2")	14	70	95	22	PT1/2	15	4	23	95	95	133	72	15	46	48
20 (3/4")	20	75	100	26	PT3/4	19	4	25	106	106	143	85	15	53	59
25 (1")	25	90	125	32	PT1	19	4	29	120	120	163	98	17	59	67
32 (1-1/4")	32	100	135	38	PT1-1/4	19	4	32	135	135	180	102	17	69	78
40 (1-1/2")	40	105	140	49	PT1-1/2	19	4	35	151	151	197	115	17	76	93
50 (2")	50	120	155	61	PT2	19	4	38	173	173	223	142	20	92	113
65 (2-1/2")	65	140	175	77	PT2-1/2	19	8	45	209	209	260	180	20	114	141
80 (3")	77	150	185	90	PT3	19	8	48	243	243	305	210	23	134	168

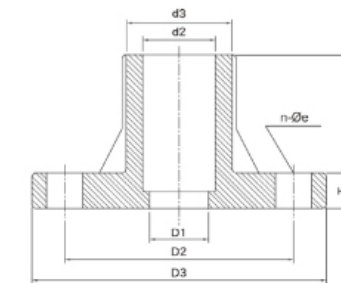
Unit : inch

Nom Size DN-inch	ANSI														
	D1	D2	D3	d		øe	n	P	L			A	T	H	B
				Socket	Thread				Socket	Thread	Flange				
10 (3/8")	0.567	2.374	3.500	0.689	NPT3/8	0.625	4	0.750	3.480	3.480	5.220	2.832	0.590	1.795	1.902
15 (1/2")	0.567	2.374	3.500	0.850	NPT1/2	0.625	4	0.886	3.756	3.756	5.220	2.832	0.590	1.795	1.902
20 (3/4")	0.780	2.752	3.874	1.060	NPT3/4	0.625	4	1.000	4.156	4.156	5.620	3.330	0.590	2.075	2.319
25 (1")	0.988	3.126	4.248	1.328	NPT1	0.625	4	1.126	4.724	4.724	6.409	3.839	0.669	2.303	2.650
32 (1-1/4")	1.254	3.500	4.626	1.673	NPT1-1/4	0.625	4	1.252	5.315	5.315	7.079	4.016	0.669	2.697	3.075
40 (1-1/2")	1.559	3.913	5.000	1.915	NPT1-1/2	0.625	4	1.378	5.961	5.961	7.740	4.528	0.700	3.008	3.646
50 (2")	1.969	4.752	6.000	2.391	NPT2	0.750	4	1.476	6.744	6.744	8.776	5.581	0.820	3.614	4.459
65 (2-1/2")	2.563	5.500	6.969	2.894	NPT2-1/2	0.750	4	1.772	8.228	8.228	10.252	7.087	0.787	4.504	5.551
80 (3")	3.031	6.000	7.500	3.520	NPT3	0.750	8	1.890	9.555	9.555	11.996	8.268	0.905	5.276	6.614

TRANSITION FLANGE



트랜지션 프랜지 TRANSITION FLANGE (ANSI PIPE + JIS BOLT)



15A(1/2")-300A(12")

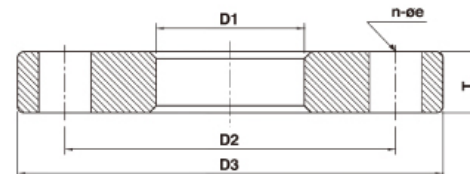
DIMENSIONS TABLE

Nom Size	øD3	øD2	øD1	T	H	H1	øe	n	ød3	ød2	Nom Size	øD3	øD2	øD1	T	H	H1	øe	n	ød3	ød2
15 (1/2")	95	70	17	15	36	32	15	4	31	21.65	80 (3")	185	150	78	20	69	61	19	8	102	89.5
20 (3/4")	100	75	21	15	43	38	15	4	35	27.00	100 (4")	210	175	100	23	90	86	19	8	133	114.9
25 (1")	125	90	25	15	46	40	19	4	42	33.80	125 (5")	250	210	126	24	113	101	23	8	159	142.1
32 (1-1/4")	135	100	31	16	50	42	19	4	48	42.60	150 (6")	280	240	146	27	141	130	23	8	186	169.1
40 (1-1/2")	140	105	41	17	62	56	19	4	62	48.70	200 (8")	330	290	192	30	162	150	23	12	239	220.2
50 (2")	155	120	51	20	69	63	19	4	73	60.80	250 (10")	400	355	246	33	170	155	25	12	292	274.2
65 (2-1/2")	175	140	66	20	69	59	19	4	88	73.60	300 (12")	445	400	300	35	187	171	25	16	345	325.0

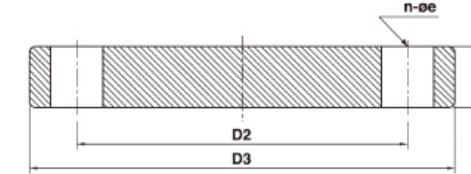
용접형 프랜지(WELDING FLANGE)/맹프랜지(BLIND FLANGE) 규격

• UPVC, PP, CPVC, PVDF

• SIZE | 15A(1/2") - 600A(24")



15A(1/2")-600A(24") WELDING FLANGE



15A(1/2")-600A(24") BLIND FLANGE

DIMENSIONS TABLE

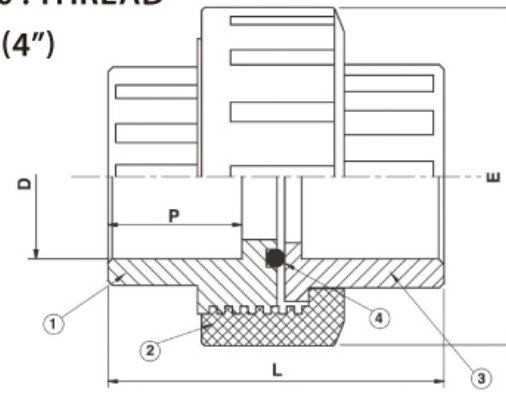
Non Size m/m(inch)	D1			D2			D3			T	e			n		
	JIS	ANSI	DIN	JIS	ANSI	DIN	JIS	ANSI	DIN		JIS	ANSI	DIN	JIS	ANSI	DIN
15 (1/2")	22±1.0	22±0.4	20±1.0	70±0.5	60±0.5	65	95±1.0	89±1.0	95	16±1	15	16	14	4	4	4
20 (3/4")	26±1.0	26±0.4	25±1.0	75±0.5	70±0.5	75	100±1.0	98±1.0	105	14±1	15	16	14	4	4	4
25 (1")	32±1.0	34±0.4	32±1.0	90±0.5	79±0.5	85	125±1.0	108±1.0	115	18±1	19	16	14	4	4	4
32 (1-1/4")	38±1.0	42±0.4	40±1.0	100±0.5	89±0.5	100	135±1.0	117±1.0	140	18±1	19	16	18	4	4	4
40 (1-1/2")	48±1.0	48±0.4	50±1.0	105±0.5	98±0.5	110	140±1.0	127±1.0	150	19±1	19	16	18	4	4	4
50 (2")	60±1.0	60±0.6	63±2.0	120±1.5	121±1.5	125	155±1.0	152±1.0	165	19±1	19	19	18	4	4	4
65 (2-1/2")	76±1.0	76±0.6	75±2.0	140±1.0	140±1.0	145	175±1.5	178±1.5	185	19±1	19	19	18	4	4	4
80 (3")	89±1.0	89±0.6	90±1.0	150±1.0	152±1.0	160	185±1.5	191±1.5	200	23±1	19	19	18	8	4	8
100 (4")	114±1.0	114±0.6	110±1.0	175±1.0	191±1.0	180	210±1.5	229±1.5	220	23±1	19	19	18	8	8	8
125 (5")	140±1.5	140±0.8	140±1.5	210±1.25	216±1.25	210	250±1.5	254±1.5	250	23±1	23	22	18	8	8	8
150 (6")	165±1.5	165±1.0	160±1.5	240±1.25	241±1.25	240	280±1.5	279±1.5	285	23±1	23	22	23	8	8	8
200 (8")	216±1.5	216±2.0	200±1.5	290±1.25	298±1.25	295	330±1.5	343±1.5	340	23±1	23	22	23	12	8	8
250 (10")	267±1.5	267±3.0	250±1.5	355±1.25	362±1.25	350	400±2.0	406±2.0	395	21±1	25	25	23	12	12	12
300 (12")	318±2.0	318±3.0	315±2.0	400±1.25	432±1.25	400	445±2.0	483±2.0	445	21±1	25	25	26	16	12	12
350 (14")	370±2.0	370±3.0	355±2.0	445±1.25	476±1.25	460	490±2.0	533±2.0	505	28±2	25	29	26	16	12	16
400 (16")	420±2.0	420±3.5	400±2.0	510±1.25	540±1.5	515	560±2.0	597±2.0	565	28±2	27	29	26	16	16	16
450 (18")	470±2.0	470±3.5	450±2.0	565±1.5	578±1.5	565	620±2.0	635±2.0	620	28±2	27	32	28	20	16	20
500 (20")	520±2.0	520±3.5	500±2.0	620±1.5	635±1.5	620	675±2.0	699±2.0	670	28±2	27	32	28	20	20	20
600 (24")	630±2.0	630±3.5	630±2.0	730±1.5	749±1.5	725	795±2.0	813±2.0	780	28±2	33	35	28	24	20	20

UNION



EU Series 유니온

- EU 100 : SOCKET / EU 200 : THREAD
- SIZE | 15A(1/2") - 100A(4")



15A(1/2") - 100A(4")

No.	Parts	Materials	Pcs
1	BODY	PVC, PP, CPVC, PVDF	1
2	UNION NUT	PVC, PP, CPVC, PVDF	1
3	END CONNECTOR	PVC, PP, CPVC, PVDF	1
4	O-RING	EPDM, VITON	1

Nom Size m/m(inch)	E	D			L		P		
		JIS	ANSI	DIN	S	TS	JIS	ANSI	DIN
15 (1/2")	47	22	21.3	20	55	57	22.22	22.22	16.0
20 (3/4")	61	26	26.7	25	68	64	25.40	25.40	18.5
25 (1")	70	32	33.4	32	75	72	28.60	28.60	22.0
32 (1-1/4")	81	38	42.2	40	81	81	31.70	31.70	26.0
40 (1-1/2")	89	48	48.3	50	90	90	34.90	34.90	31.0
50 (2")	101	60	60.3	63	102	102	38.10	38.10	37.5
65 (2-1/2")	150	76	73.0	75	87	115	44.50	44.50	43.5
80 (3")	184	89	88.9	90	118	136	47.60	47.60	51.0
100 (4")	199	114	114.3	110	156	156	57.20	57.20	61.0

S: 나사(screw) TS: 소켓(socket)

NEW UNION

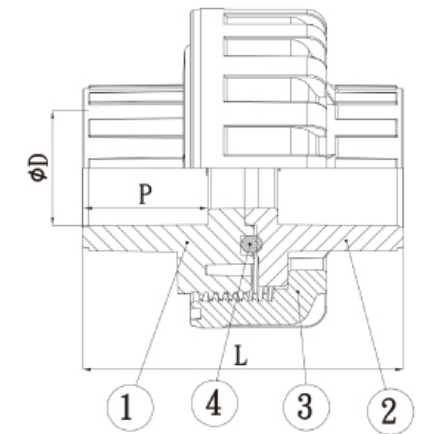


EK 100 : SOCKET / EK 200 : THREAD

EK Series 신형 유니온

- SIZE | 10A(3/8") - 80A(3")

NO.	Parts	Materials	Pcs
1	BODY	PVC, CPVC	1
2	END CONNECTOR	PVC, CPVC	1
3	UNION NUT	PVC, CPVC	1
4	O-RING	EPDM, VITON	1



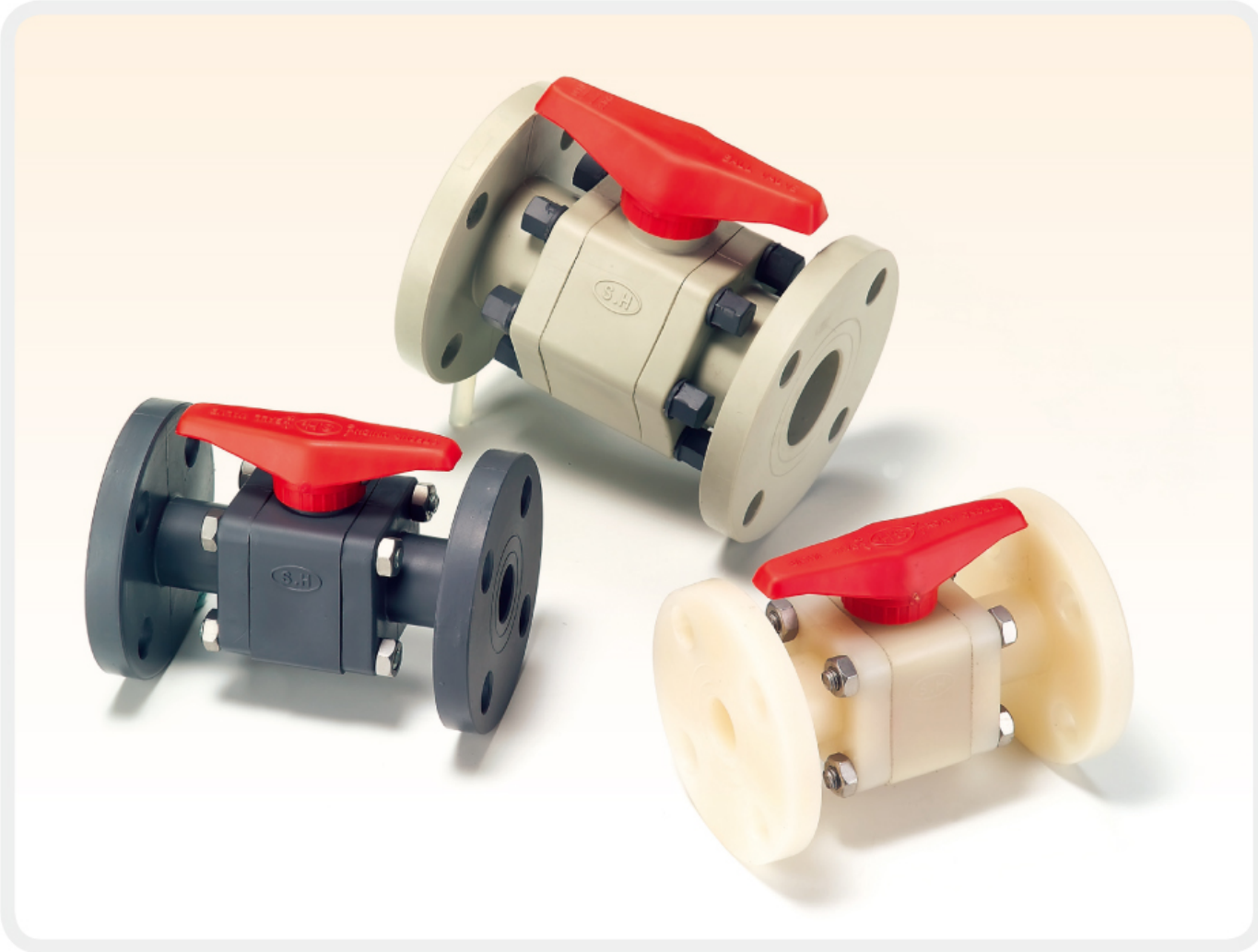
10A(3/8") - 80A(3")

Nom Size m/m(inch)	D			L		P		
	JIS	ANSI	DIN	S	TS	JIS	ANSI	DIN
10 (3/8")	18.25	17.50	16.20	48.25	48.25	19.05	19.05	14.60
15 (1/2")	22.25	21.60	20.20	55.30	55.30	22.50	22.50	22.50
20 (3/4")	26.30	26.92	25.25	60.60	60.60	25.40	25.40	18.50
25 (1")	32.37	33.72	32.30	67.20	67.20	28.60	28.60	22.00
32 (1-1/4")	38.33	42.50	40.28	75.60	75.60	31.80	31.80	26.00
40 (1-1/2")	48.50	48.65	50.30	82.00	82.00	35.00	35.00	31.00
50 (2")	60.60	60.73	63.30	90.50	90.50	38.10	38.10	37.50
65 (2-1/2")	76.60	73.50	75.20	109.80	109.80	45.00	45.00	45.00
80 (3")	89.60	89.40	90.30	127.90	127.90	48.00	48.00	51.00

S: 나사(screw) TS: 소켓(socket)

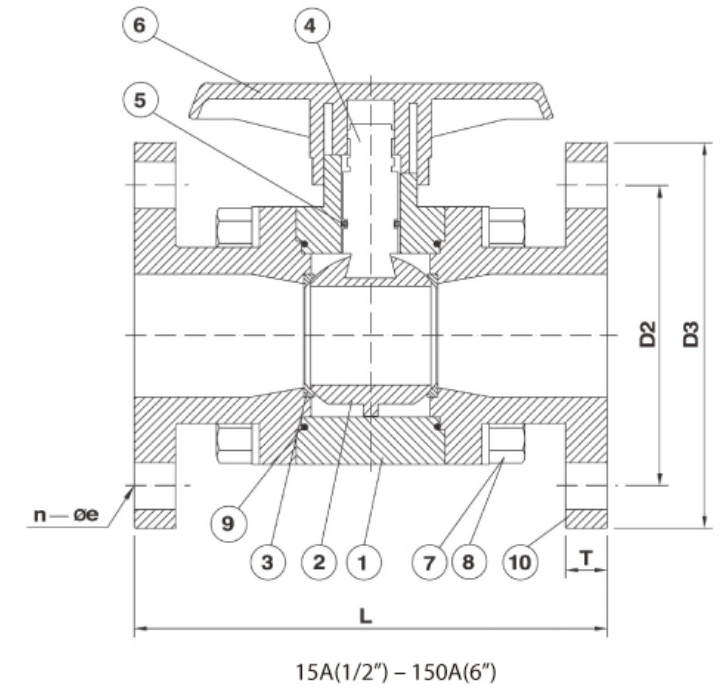
STRONG UNION BALL VALVE

T H E R M O P L A S T I C V A L V E



SPECIFICATIONS

1. Test Press | ① {15mm-1/2" ~ 65mm-2 1/2"} : 15kgf/cm²
 ② {80mm-3" ~ 100mm-4"} : 10kgf/cm²
 ③ {125mm-5" ~ 150mm-6"} : 7kgf/cm²
2. Working Press | ① {15mm-1/2" ~ 65mm-2 1/2"} : 10kgf/cm²
 ② {80mm-3" ~ 100mm-4"} : 7kgf/cm²
 ③ {125mm-5" ~ 150mm-6"} : 5kgf/cm²



CG Series

스트롱 유니온 볼밸브

- CG300
- SIZE | 15A(1/2") - 150A(6")

MATERIALS OF CONSTRUCTION

No.	Parts	Pcs	Materials	No.	Parts	Pcs	Materials
1	BODY	1	PVC, PP, PPG, PVDF	6	HANDLE	1	15A-100A ABS 125A-150A FC25
2	BALL	1	PVC, PP, PPG, PVDF	7	BOLT	4 15A-25A 6 40A-80A 8 100A 10 150A	Steel SUS-304 PVC COATED BRASS, 100-150 SUS304
3	SEAT	2	TEFLON	8	NUT		
4	SHAFT	1	PVC, PP, PPG, PVDF	9	FLANGE O-RING	2	EPDM, VITON
5	O-RING	1 ... 15A-32A 2 ... 40A-150A	EPDM, VITON	10	FLANGE	2	PVC, PP, PPG, PVDF

DIMENSIONS TABLE

Standards Nom Size DN-inch	JIS Unit : mm						ANSI Unit : inch					DIN Unit : mm						
	D3	D2	L Flange end	n	øe	T	D3	D2	L Flange end	n	øe	T	D3	D2	L Flange end	n	øe	T
15 (1/2")	95	70	142	4	15	13	3.50	2.38	5.59	4	0.63	0.51	95	65	142	4	14	13
20 (3/4")	100	75	152	4	15	15	3.88	2.76	5.98	4	0.63	0.59	105	75	152	4	14	15
25 (1")	125	90	170	4	19	16	4.25	3.13	6.69	4	0.63	0.63	115	85	170	4	14	16
32 (1-1/4")	135	100	170	4	19	16	4.62	3.50	6.69	4	0.71	0.63	140	100	170	4	18	16
40 (1-1/2")	140	105	184	4	19	18	5.00	3.88	7.24	4	0.71	0.71	150	110	184	4	18	18
50 (2")	155	120	192	4	19	18	6.00	4.74	7.56	4	0.67	0.71	165	125	192	4	18	18
65 (2-1/2")	175	140	216	4	19	20	7.00	5.49	8.50	4	0.75	0.78	185	145	216	4	18	20
80 (3")	185	150	245	8	19	20	7.50	6.00	9.64	4	0.75	0.78	200	160	245	8	18	20
100 (4")	210	175	296	8	19	23	9.00	7.50	11.65	8	0.78	0.90	220	180	296	8	18	23
125 (5")	250	210	395	8	23	24	10.00	8.50	15.55	8	0.87	0.94	250	210	395	8	18	24
150 (6")	280	240	395	8	23	24	11.00	9.50	15.55	8	0.87	0.94	280	240	395	8	23	24

* 밸브 치수는 PVC 재질기준 입니다. 테스트 압력은 PVC, PVDF 재질기준 입니다. PP 재질의 테스트 압력은 상기 표의 70%입니다.

DIAPHRAGM VALVE / FLANGED TYPE



DF Series 다이아후램 밸브 (프랜지식)

- DF300
- SIZE | 15A(1/2") - 250A(10")

MATERIALS OF CONSTRUCTION

No.	Parts	Pcs	Materials	No.	Parts	Pcs	Materials
1	BODY	1	UPVC, PP, CPVC, PPG, PVDF	11	GREASE NIPPLE	1	SUS304
2	BONNET	1	PPG, PVDF	12	STUD BOLT & NUT	4 15A-25A 6 40A-50A 8 65A-125A 12 150A 16 200A 20 250A
3	COMPRESSOR	1	15A-25A PVDF 40A-250A FC20	13	INSERTED NUT	1	BSBM
4	HAND WHEEL	1	PP, ABS	14	BOLT NUT & WASHER	1	SUS304
5	SLEEVE	1	15A-50A BSBM 65A-250A FC25	15	THRUST BEARING	1	Standardized 80A-250A USED ONLY
6	STEM	1	15A-50A BSBM 65A-250A SS41	16	STOPPER	1	SS-41 BSBM SUS304
7	DIAPHRAGM	1	EPDM, HYPALON, TEFLON	17	SET NUT	1	SS-41 BSBM SUS304
8	CAP	1	15A-25A BSBH 40A-250A PVC	18	GAUGE COVER	1	PC
9	COMPRESSOR PIN	1	SUS-304	19	SHEET RING	1	EPDM
10	NAME PLATE	1	PVC	20	WASHER	1	SUS304

Note : 1. SUS304 ... Stainless Steel AISI 304 2. SS 41 ... Rolled steel for General Structure 3. BSBM ... Free Cutting Brass Bar
 4. FC 20 ... Grav Cast Iron 5. SUP ... Steel for Spring ASTM A-230-68

The Standard material to bonnet : PPG.
 Optional PVDF bonnet material for PVDF diaphragm valve.
 Optional materials on request for part no. 4.5.6.12.14. : SUS 304 or SUS 316. ® VITON & TEFLON are trademarks of E.I. Du Pont

DIMENSIONS TABLE

Nom Size m/m(inch)	JIS Unit : mm																					
	D1	D2	D3	e	n No. of holes	D4	D5	Lift ℓ	L	T	H	I	PRESS Test for Assembly (at 20°C) Test Pressure Unit : kgf/cm ²									
													Rubber Diaphragm					Teflon Diaphragm				
UPVC	PP	PPG	CPVC	PVDF	UPVC	PP	PPG	CPVC	PVDF	UPVC	PP	PPG	CPVC	PVDF								
15 (1/2")	16	70	91.5	15	4	58x51	94	13	110	15	101	140	10	10	10	10	10	10	7	7	10	7
20 (3/4")	20	75	97.0	15	4	70x60	94	13	120	17	106	152	10	10	10	10	10	10	7	7	10	7
25 (1")	25	90	122.5	19	4	79x65	94	14	130	17	113	158	10	10	10	10	10	10	7	7	10	7
40 (1-1/2")	41	105	135.0	19	4	123	147	24	180	19	133	193	10	10	10	10	10	10	7	7	7	7
50 (2")	52	120	151.0	19	4	148	147	28	210	19	145	210	10	10	10	10	10	10	7	7	7	7
65 (2-1/2")	68	140	185.0	19	4	183	202	32	250	24	197	276	10	10	10	10	10	10	7	7	7	7
80 (3")	78	150	183.5	19	8	201	202	34	280	23	218	293	10	10	10	10	10	6	5	6	6	6
100 (4")	100	175	232.8	19	8	250	241	54	340	24	261	370	10	10	10	10	10	6	5	6	6	6
125 (5")	125	210	250.0	23	8	321	274	72	410	26	308	412	7	7	7	7	7	5	4	4	5	5
150 (6")	148	240	282.0	23	8	382	395	72	480	33	334	471	7	7	7	7	7	5	4	4	5	5
200 (8")	198	290	337.0	23	12	431	395	96	570	33	419	625	4	4	4	4	4	3	3	3	3	3
250 (10")	248	355	397.0	25	12	529	555	132	680	38	510	750	4	3	4	4	4	3	3	3	3	3

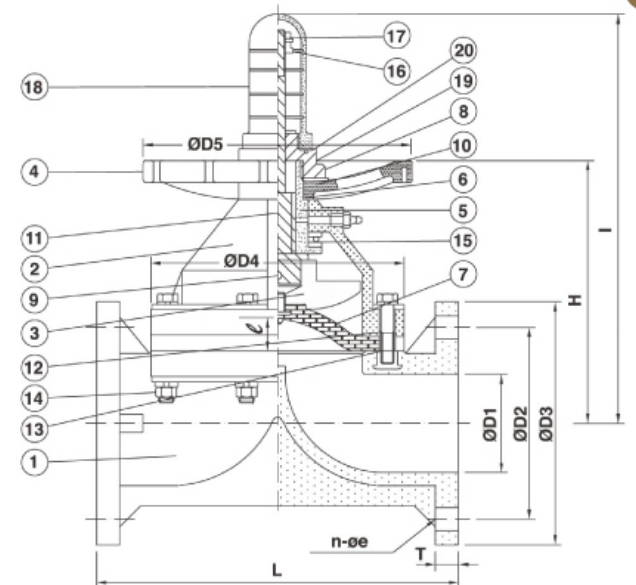
CV VALUE

SIZE	CV치
Full Open : 100%	
15 (1/2")	3.27
20 (3/4")	5.29
25 (1")	8.87
40 (1-1/2")	31.09
50 (2")	43.15
65 (2-1/2")	90.68
80 (3")	116.79
100 (4")	186.78
150 (6")	345.26

BOLTS TORQUE VALUE

SIZE	Kg.m	N.m
15 (1/2")	90	8.83
20 (3/4")	110	10.79
25 (1")	110	10.79
40 (1-1/2")	150	14.72
50 (2")	220	21.58
65 (2-1/2")	220	21.58
80 (3")	280	27.47
100 (4")	280	27.47
150 (6")	280	27.47

1Kg.cm = 0.0981N.m



DIMENSIONS TABLE

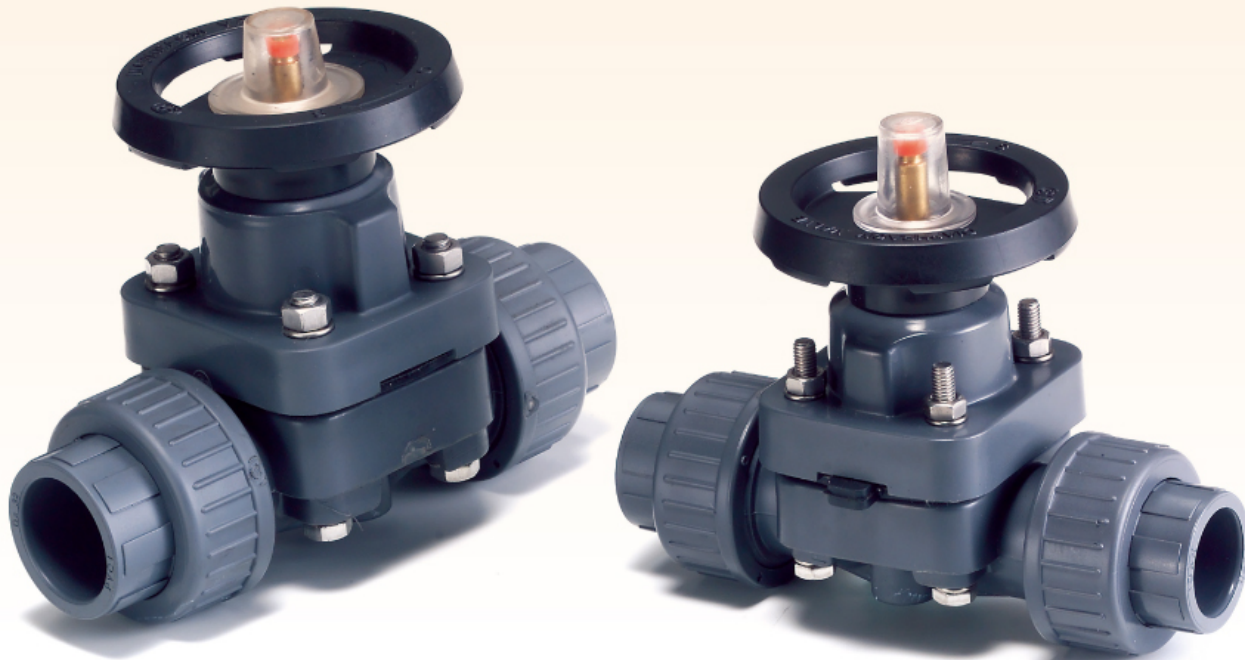
Nom Size m/m(inch)	ANSI Unit : inch											PRESS Test for Assembly (at 20°C) Test Pressure Unit : psi										
	D1	D2	D3	e	n No. of holes	D4	D5	Lift ℓ	L	T	H	I	Rubber Diaphragm				Teflon Diaphragm					
													UPVC	PP	PPG	CPVC	PVDF	UPVC	PP	PPG	CPVC	PVDF
15 (1/2")	0.63	2.38	3.50	0.63	4	2.28x2	3.70	0.51	4.25	0.59	3.98	5.51	150	150	150	150	150	150	105	105	150	105
20 (3/4")	0.79	2.76	3.86	0.63	4	2.76x2.36	3.70	0.51	5.90	0.63	4.17	5.98	150	150	150	150	150	150	105	105	150	105
25 (1")	0.98	3.13	4.25	0.63	4	3.11x2.56	3.70	0.55	5.90	0.63	4.45	6.22	150	150	150	150	150	150	105	105	150	105
40 (1-1/2")	1.61	3.88	5.00	0.63	4	4.84	5.79	0.94	6.95	0.67	5.24	7.60	150	150	150	150	150	105	105	105	105	105
50 (2")	2.05	4.74	5.98	0.75	4	5.83	5.79	1.10	7.95	0.67	5.71	8.27	150	150	150	150	150	105	105	105	105	105
65 (2-1/2")	2.68	5.49	7.01	0.75	4	7.20	7.95	1.26	9.85	0.87	7.76	10.87	150	150	150	150	150	105	105	105	105	105
80 (3")	3.07	6.00	7.52	0.75	4	7.91	7.95	1.34	10.40	0.75	8.50	11.54	150	150	150	150	150	90	75	90	90	90
100 (4")	3.94	7.50	9.17	0.75	8	9.84	9.49	2.13	12.95	0.91	10.28	14.57	150	150	150	150	150	90	75	90	90	90
125 (5")	4.92	8.50	10.00	0.87	8	12.64	10.79	2.83	16.14	0.94	12.13	16.22	105	105	105	105	105	75	60	60	75	75
150 (6")	5.83	9.51	10.98	0.87	8	15.04	15.55	2.83	18.90	1.18	13.15	18.54	105	105	105	105	105	75	60	60	75	75
200 (8")	7.80	11.75	13.50	0.87	8	16.97	15.55	3.78	22.44	1.26	16.40	24.61	60	60	60	60	60	45	45	45	45	45
250 (10")	9.76	14.25	15.98	0.98	12	20.83	21.85	5.20	26.77	1.26	20.08	29.53	60	45	60	60	60	45	45	45	45	45

Nom Size m/m(inch)	DIN Unit : mm											PRESS Test for Assembly (at 20°C) Test Pressure Unit : kgf/cm ²										
	D1	D2	D3	e	n No. of holes	D4	D5	Lift ℓ	L	T	H	I	Rubber Diaphragm				Teflon Diaphragm					
													UPVC	PP	PPG	CPVC	PVDF	UPVC	PP	PPG	CPVC	PVDF
15 (1/2")	16	65	95.0	14	4	58x51	94	13	130	23	101	140	10	10	10	10	10	10	7	7	10	7
20 (3/4")	20	75	105.0	14	4	70x60	94	13	150	23	106	152	10	10	10	10	10	10	7	7	10	7
25 (1")	25	85	115.0	14	4	79x65	94	14	160	23	113	158	10	10	10	10	10	10	7	7	10	7
40 (1-1/2")	41	110	150.0	18	4	123	147	24	200	23	133	193	10	10	10	10	10	7	7	7	7	7
50 (2")	52	125	165.0	18	4	148	147	28	230	21	145	210	10	10	10	10	10	7	7	7	7	7
65 (2-1/2")	68	145	185.0	18	4	183	202	32	290	22	197	276	10	10	10	10	10	7	7	7	7	7
80 (3")	78	160	200.0	18	8	201	202	34	310	22	218	293	10	10	10	10	10	6	5	6	6	6
100 (4")	100	180	232.8	18	8	250	241	54	350	25	261	370	10	10	10	10	10	6	5	6	6	6
125 (5")	125	210	250.0	18	8	321	274	72	400	24	308	412	7	7	7	7	7	5	4	4	5	5
150 (6")	148	240	285.0	23	8	382	395	72	480	30	334	471	7	7	7	7	7	5	4	4	5	5
200 (8")	198	295	340.0	23	8	431	395	96	600	32	419	625	4	4	4	4	4	3	3	3	3	3
250 (10")	248	350	395.0	23	12	529	555	132	680	32	510	750	4	3	4	4	4	3	3	3	3	3

* 표준 치수는 PVC 재질 기준입니다.

TRUE UNION DIAPHRAGM VALVE

T H E R M O P L A S T I C V A L V E



DF Series

다이아프램 밸브 (유니온식)

• DF100 SOCKET / DF200 THREAD

MATERIALS OF CONSTRUCTION

Item	Parts	Pcs	Materials	Item	Parts	Pcs	Materials
1	SHAFT	1	BRASS	9	GAUGE COVER	1	PC
2	DIAPHRAGM	1	EPDM, TEFLON	10	O-RING	2	EPDM, VITON
3	BODY	1	UPVC, PP, CPVC, PVDF	11	COMPRESSOR	1	15A-25A PVDF 32A-50A PPG
4	SLEEVE	1	BRASS	12	INDICATOR	1	PE
5	UNION NUT	2	UPVC, PP, CPVC, PVDF	13	BOLT	4	SUS304
6	HANDLE	1	ABS	14	NUT	4	SUS304
7	END CONNECTOR	2	UPVC, PP, CPVC, PVDF	15	SPRING WASHER	8	SUS304
8	BONNET	1	UPVC, PP, CPVC, PVDF				

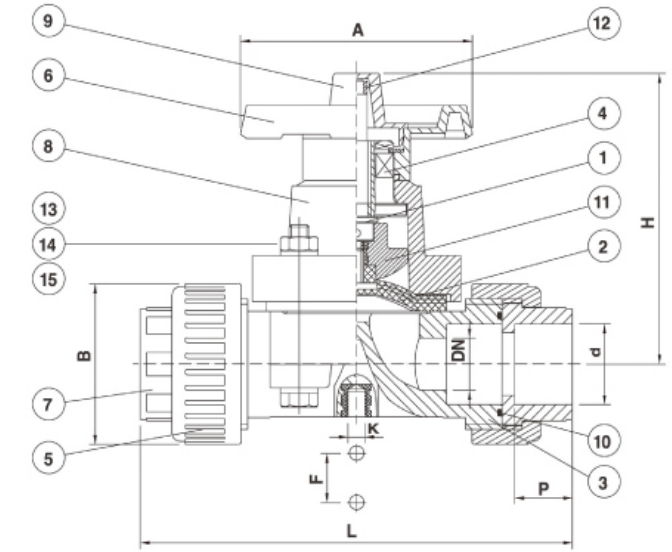
TORQUE VALUE

SIZE	Kg.m	N.m
15 (1/2")- 20 (3/4")	80	7.85
25 (1")	80	7.85
40 (1-1/2")	100	9.81
50 (2")	100	9.81

1Kg.cm = 0.0981N.m

CV VALUE

CV치 [GMP/(1lbf/in ²) ^{1/2}]	
Opening : 100%	
SIZE	CV치
15 (1/2")	3.27
20 (3/4")	5.29
25 (1")	8.87
40 (1-1/2")	31.09
50 (2")	43.15



15A(1/2") - 50A(2")

DIMENSIONS TABLE

Standards		Nom Size	15 (1/2")	20 (3/4")	25 (1")	32 (1-1/4")	40 (1-1/2")	50 (2")
JIS	d	Socket	22	26	32	38	48	60
		Thread	PT1/2	PT3/4	PT1	PT1-1/4	PT1-1/2	PT2
	P	22.2	25.4	28.6	31.8	34.9	38.1	
	B	54	54	63	89	89	101	
	L	166	166	183	238	238	273	
	H	107.5	107.5	116.0	142.0	142.0	176.0	
	A	81	81	91	117	117	150	
	F	25	25	25	45	45	45	
	K	8	8	8	8	8	8	
	Unit : mm	Test Pres, kgf/cm ²	PTFE Dia,	7	7	7	7	7
Rubber Dia,			10	10	10	10	10	10
ANSI	d	Socket	0.84	1.05	1.32	1.66	1.90	2.38
		Thread	NPT1/2	NPT3/4	NPT1	NPT1-1/4	NPT1-1/2	NPT2
	P	0.875	1.000	1.125	1.250	1.375	1.500	
	B	2.126	2.126	2.480	3.500	3.500	3.970	
	L	6.53	6.53	7.20	9.37	9.37	10.74	
	H	4.230	4.230	4.567	5.591	5.591	6.929	
	A	3.189	3.189	3.583	4.606	4.606	5.906	
	F	0.984	0.984	0.984	1.772	1.772	1.772	
	K	0.315	0.315	0.315	0.315	0.315	0.315	
	Unit : inch	Test Pres, lb/in ²	PTFE Dia,	104	104	104	104	104
Rubber Dia,			148	148	148	148	148	148
DIN	d	Socket	20	25	32	40	50	63
		Thread	R1/2	R1/4	R1	R1-1/4	R1-1/2	R2
	P	16.0	18.5	22.0	26.0	31.0	37.5	
	B	54	54	63	89	89	101	
	L	166	166	183	238	238	273	
	H	107.5	107.5	116.0	142.0	142.0	176.0	
	A	81	81	91	117	117	150	
	F	25	25	25	45	45	45	
	K	8	8	8	8	8	8	
	Unit : mm	Test Pres, kgf/cm ²	PTFE Dia,	7	7	7	7	7
Rubber Dia,			10	10	10	10	10	10

* 표준 치수는 PVC 재질 기준입니다.

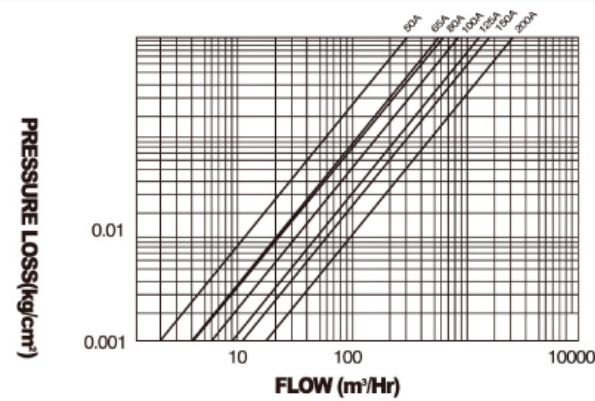
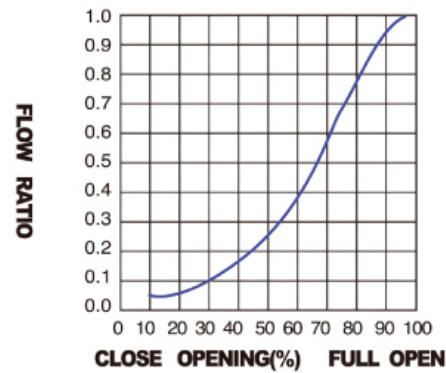
BUTTERFLY VALVE LEVER HANDLE TYPE



BB Series

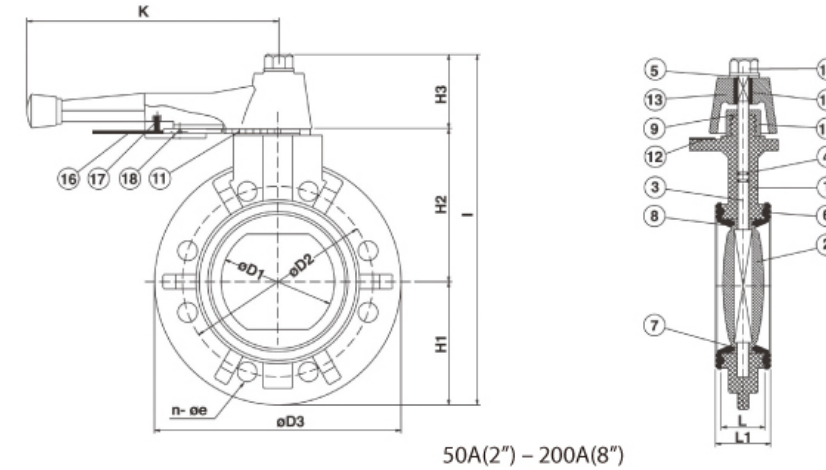
버터플라이 밸브 (레버식)

- BB300
- SIZE | 50A(2") - 200A(8")
- OPTION | 200A(8") GEAR OPERATOR TYPE



MATERIALS OF CONSTRUCTION

No.	Parts	Pcs	Materials	No.	Parts	Pcs	Materials
1	BODY	1	UPVC, PP, PPG, PVDF, CPVC	10	REATAINER CAP	1	UPVC, PP, PVDF
2	DISC	1	UPVC, PP, PPG, PVDF, CPVC	11	POSITIONER	1	SUS304
3	STEM	1	SUS410, SUS316, SUS304	12	SCREW	3 DN50-200 4 DN200	SUS304
4	STEM O-RING	2	EPDM, VITON	13	HANDLE	1	ABS
5	WASHER	1	SUS304	14	INSERTED METAL OF HANDLE	1	FC0208
6	SEAT	1	EPDM, VITON, NBR, HYPALON	15	NUT	1	PVC COATED BRASS, SUS304
7	DISC O-RING(1)	2	EPDM, VITON	16	HANDLE LEVER	1	SUS304
8	DISC O-RING(2)	2	EPDM, VITON	17	SPRING	1	SUS304
9	STEM RETAINER	1	SUS304	18	SET PIN	1	BSBM



50A(2") - 200A(8")

TORQUE VALUES (1kgf/m=9.8N.m)

BF-V'S Size	Torque Under Without Any Water Pressure (kgf/m)	Under Water Testing Pressure(Kg/cm ²)		
		Water Pressure (Kgf/cm ²)	Open Torque (kgf/m)	Close Torque (kgf/m)
50 (2")	1.5	15	0.5	0.5
65 (2-1/2")	1.5	15	0.5	0.5
80 (3")	2.0	15	1.0	1.5
100 (4")	2.0	12	1.0	1.5
125 (5")	5.0	12	2.5	4.5
150 (6")	6.5	12	4.0	7.0
200 (8")	10.0	10	6.0	8.5

DIMENSIONS TABLE

Nom Size DN(inch)	D1	D2	D3	øe	n	L	L1	H1	H2	H3	I	K	Test Press(kgf/cm ²)		Working Press (kgf/cm ²)
													Body	Seat	
50 (2")	57	120	160.0	19	4	35	42	83	102	63	253	220	15.0	12.0	10.0
65 (2-1/2")	72	140	184.0	19	4	37	46	92	110	63	270	220	15.0	12.0	10.0
80 (3")	80	150	200.0	19	8	37	46	100	118	63	286	220	15.0	12.0	10.0
100 (4")	100	175	230.0	19	8	47	56	115	134	63	312	220	15.0	12.0	10.0
125 (5")	130	210	250.0	23	8	57	66	127	160	96	391	310	15.0	12.0	10.0
150 (6")	150	240	290.0	23	8	62	71	145	177	96	418	310	15.0	12.0	10.0
200 (8")	203	290	347.5	23	12	76	87	168	204	93	476	414	15.0	12.0	10.0

Nom Size DN(inch)	D1	D2	D3	øe	n	L	L1	H1	H2	H3	I	K	Test Press(lb/in ²)		Working Press (lb/in ²)
													Body	Seat	
50 (2")	2.24	4.75	6.29	0.75	4	1.38	1.65	3.27	4.01	2.48	9.96	8.66	222	177	150
65 (2-1/2")	2.83	5.50	7.24	0.75	4	1.46	1.81	3.62	4.33	2.48	10.63	8.66	222	177	150
80 (3")	3.15	6.00	7.87	0.75	4	1.46	1.81	3.94	4.64	2.48	11.26	8.66	222	177	150
100 (4")	3.93	7.50	9.06	0.75	8	1.85	2.20	4.53	5.28	2.48	12.48	8.66	222	177	150
125 (5")	5.12	8.50	9.84	0.87	8	2.24	2.60	5.00	6.30	3.78	15.00	12.20	222	177	150
150 (6")	5.90	9.50	11.42	0.87	8	2.44	2.80	5.71	6.97	3.78	16.46	12.20	222	177	150
200 (8")	7.99	11.75	13.68	0.87	8	2.99	3.43	6.61	8.03	3.66	18.74	16.30	222	177	150

Nom Size DN(inch)	D1	D2	D3	øe	n	L	L1	H1	H2	H3	I	K	Test Press(kgf/cm ²)		Working Press (kgf/cm ²)
													Body	Seat	
50 (2")	57	125	160.0	18	4	35	42	83	102	63	253	220	15.0	12.0	10.0
65 (2-1/2")	72	145	184.0	18	4	37	46	92	110	63	270	220	15.0	12.0	10.0
80 (3")	80	160	200.0	18	8	37	46	100	118	63	286	220	15.0	12.0	10.0
100 (4")	100	180	230.0	18	8	47	56	115	134	63	312	220	15.0	12.0	10.0
125 (5")	130	210	250.0	18	8	57	66	127	160	96	391	310	15.0	12.0	10.0
150 (6")	150	240	290.0	23	8	62	71	145	177	96	418	310	15.0	12.0	10.0
200 (8")	203	295	347.5	23	8	76	87	168	204	93	476	414	15.0	12.0	10.0

* 표준 치수는 PVC 재질 기준입니다.

BUTTERFLY VALVE GEAR OPER. FULL FLANGED TYPE



BF Series 버터플라이 밸브 (기어식)

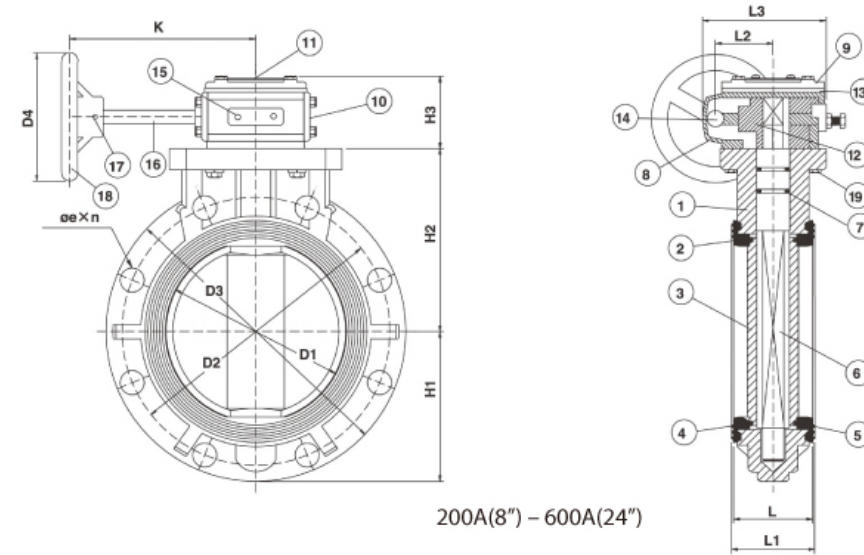
- BF300
- SIZE | 200A(8") - 600A(24")
- OPTION | 200A(8") LEVER TYPE.

MATERIALS OF CONSTRUCTION

No.	Parts	Pcs	Materials	No.	Parts	Pcs	Materials
1	BODY	1	UPVC, PP, CPVC, PPG, PVDF	11	INDICATOR PLATE	1	PVC
2	SEAT	1	EPDM, VITON, NBR, HYPALON	12	GEAR	1	FCD45
3	DISC	1	UPVC, PP, CPVC, PPG, PVDF	13	OIL SEAL	1	EPDM
4	DISC O-RING(A)	2	EPDM, VITON	14	BEARING	1	SMCM220/420/810
5	DISC O-RING(B)	2	EPDM, VITON	15	ADJUATABLE BOLT	2	SS41
6	STEM	1	SUS410, SUS304, SUS316	16	GEARING	1	SS41
7	STEM O-RING	2	EPDM, VITON	17	SET PIN	1	K7
8	GEAR BOX	1	FC25	18	HAND WHEEL	1	FC25
9	GEAR BOX CAP	1	FC25	19	TIGHTENING BOLT	4	SCM3, SUS304
10	SIDE CAP	1	FC25				

TORQUE VALUES (1kgf/m=9.8N.m)

BF-V'S Size	Torque Under Without Any Water Pressure (kgf/m)	Under Water Testing Pressure(Kg/cm ²)			BF-V'S Size	Torque Under Without Any Water Pressure (kgf/m)	Under Water Testing Pressure(Kg/cm ²)		
		Water Pressure (Kgf/cm ²)	Open Torque (kgf/m)	Close Torque (kgf/m)			Water Pressure (Kgf/cm ²)	Open Torque (kgf/m)	Close Torque (kgf/m)
50 (2")	1.5	15	0.5	0.5	250 (10")	17.0	8	7.0	10.0
65 (2-1/2")	1.5	15	0.5	0.5	300 (12")	27.0	6	14	18
80 (3")	2.0	15	1.0	1.5	350 (14")	37.0	6	25	28
100 (4")	2.0	12	1.0	1.5	400 (16")	42.0	-	-	-
125 (5")	5.0	12	2.5	4.5	450 (18")	52.0	-	-	-
150 (6")	6.5	12	4.0	7.0	500 (20")	65.0	-	-	-
200 (8")	10.0	10	6.0	8.5	600 (24")	76.0	-	-	-



200A(8") - 600A(24")

DIMENSIONS TABLE

Nom Size DN(inch)	JIS														Unit : mm		
	D1	D2	n	øe	D3	L	L1	H1	H2	H3	K	L2	L3	D4	Test Press(kgf/cm ²)		Working Press(kgf/cm ²)
															Body	Seat	
200 (8")	203	290	12	23	347	76	87	174	211.2	69	178	51	136	178.0	15.0	12.0	10.0
250 (10")	255	355	12	25	411	96	111	200	242.7	69	178	51	136	178.0	15.0	12.0	10.0
300 (12")	312	400	16	25	483	116	132	239	289.0	103	212	72	189	230.0	10.5	8.5	7.0
350 (14")	355	445	16	25	520	116	132	259	305.0	103	212	72	189	300.0	10.5	8.5	7.0
400 (16")	398	510	16	27	600	153	169	302	353.0	110	212	72	189	355.8	9.0	7.0	6.0
450 (18")	451	565	20	27	640	166	181	317	365.0	121	269	116	285	464.0	7.5	6.0	5.0
500 (20")	500	620	20	27	711	171	190	365	405.0	121	330	116	285	464.0	5.0	4.0	3.5
600 (24")	600	730	24	33	813	191	209	425	460.0	121	330	116	285	464.0	5.0	4.0	3.5

Nom Size DN(inch)	ANSI														Unit : inch		
	D1	D2	n	øe	D3	L	L1	H1	H2	H3	K	L2	L3	D4	Test Press(lb/in ²)		Working Press(lb/in ²)
															Body	Seat	
200 (8")	7.99	11.75	8	0.88	13.66	2.99	3.43	6.85	8.31	2.72	7.01	2.01	5.35	7.00	222	177	150
250 (10")	10.00	14.25	12	0.98	16.18	3.78	4.37	7.87	9.56	2.72	7.01	2.01	5.35	7.00	222	177	150
300 (12")	12.28	17.00	12	0.98	19.02	4.57	5.20	9.41	11.38	4.05	8.35	2.83	7.44	9.06	155	125	105
350 (14")	13.97	18.75	12	1.14	20.47	4.57	5.20	10.20	12.01	4.05	8.35	2.83	7.44	11.81	155	125	105
400 (16")	15.69	21.25	16	1.14	23.62	6.02	6.65	11.89	13.90	4.33	8.35	2.83	7.44	14.01	133	103	88
450 (18")	17.75	22.75	16	1.26	25.20	6.54	7.13	12.48	14.37	4.76	10.59	4.57	11.22	18.27	111	88	74
500 (20")	19.70	25.00	20	1.26	27.99	6.73	7.48	14.37	15.94	4.76	12.99	4.57	11.22	18.27	74	59	52
600 (24")	23.66	29.50	20	1.38	32.00	7.52	8.23	16.73	18.11	4.76	12.99	4.57	11.22	18.27	74	59	52

Nom Size DN(inch)	DIN														Unit : mm		
	D1	D2	n	øe	D3	L	L1	H1	H2	H3	K	L2	L3	D4	Test Press(kgf/cm ²)		Working Press(kgf/cm ²)
															Body	Seat	
200 (8")	203	295	8	23	347	76	87	174	211.2	69	178	51	136	178.0	15.0	12.0	10.0
250 (10")	255	350	12	25	411	96	111	200	242.7	69	178	51	136	178.0	15.0	12.0	10.0
300 (12")	312	400	12	25	483	116	132	239	289.0	103	212	72	189	230.0	10.5	8.5	7.0
350 (14")	355	460	16	25	520	116	132	259	305.0	103	212	72	189	300.0	10.5	8.5	7.0
400 (16")	398	515	16	27	600	153	169	302	363.0	110	212	72	189	355.8	9.0	7.0	6.0
450 (18")	451	565	20	27	640	166	181	317	365.0	121	269	116	285	464.0	7.5	6.0	5.0
500 (20")	500	620	20	27	711	171	190	365	405.0	121	330	116	285	464.0	5.0	4.0	3.5
600 (24")	600	725	20	30	813	191	209	425	460.0	121	330	116	285	464.0	5.0	4.0	3.5

* 표준 치수는 PVC 재질 기준입니다.

SUPER LARGE SIZED BUTTERFLY VALVE



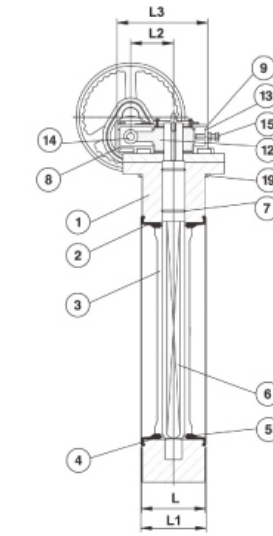
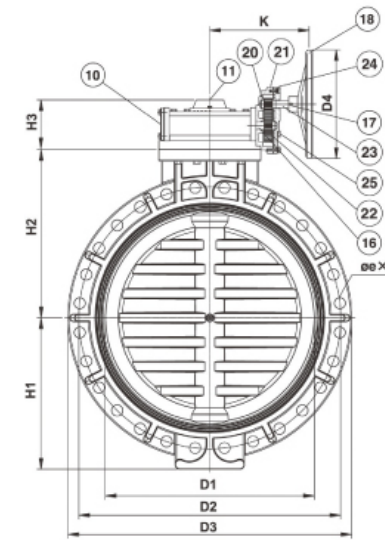
BS Series

대구경 버터플라이 밸브

- BS300
- SIZE | 700A(28") - 1200A(48")
- MATERIAL | UPVC, PP, CPVC, PPG, PVDF
- MODEL | Gear operated type, Chaining type
Hydraulic type, Pneumatin type

MATERIALS OF CONSTRUCTION

No.	Parts	Pcs	Materials	No.	Parts	Pcs	Materials
1	BODY	1	PP, PPG	14	BEARING	1	STEEL
2	SEAT	1	EPDM, VITON, NBR, HYPALON	15	ADJUSTABLE BOLT	2	STEEL
3	DISC	1	UPVC, PP, CPVC, PPG, PVDF	16	WORM SHAFT	1	STEEL
4	DISC O-RING(A)	2	EPDM, VITON	17	SET PIN	1	K7
5	DISC O-RING(B)	2	EPDM, VITON	18	HAND WHEEL	1	CAST IRON
6	STEM	1	SUS410	19	TIGHTENING BOLT	4	SUS304
7	STEM O-RING	2	EPDM, VITON	20	BEARING	4	COPPER
8	GEAR BOX	1	CAST IRON	21	SPUR GEAR BODY	1	CAST IRON
9	GEAR BOX CAP	1	CAST IRON	22	SPUR GEAR	1	STEEL
10	SIDE CAP	1	CAST IRON	23	SPUR GEAR SHAFT	1	STEEL
11	INICATOR PLATE	1	CAST IRON	24	SPUR GEAR COVER	1	CAST IRON
12	GEAR	1	DUCTILE IRON	25	BOLT	6	STEEL
13	OIL SEAL	1	PAPER				



700A(28") - 1200A(48")

DIMENSIONS TABLE

Nom Size DN(inch)	JIS												Unit : mm	
	D1	D2	D3	n	e	H1	H2	H3	K	D4	L	L1	Test Press (kgf/cm ²)	Working Press (kgf/cm ²)
700 (28")	680	840	928	24	33	499	563	125	306	406	200	206	4	3
800 (32")	780	950	1060	28	33	565	630	128	370	406	234	246	4	3
900 (36")	870	1050	1178	28	33	624	694	142	370	406	234	245	4	3
1000 (40")	970	1160	1286	28	39	684	762	210	471	508	294	301	4	3
1100 (44")	1070	1275	1403	28	39	712	823	210	471	508	294	301	3	2
1200 (48")	1170	1380	1512	32	39	776	876	210	471	508	294	301	3	2

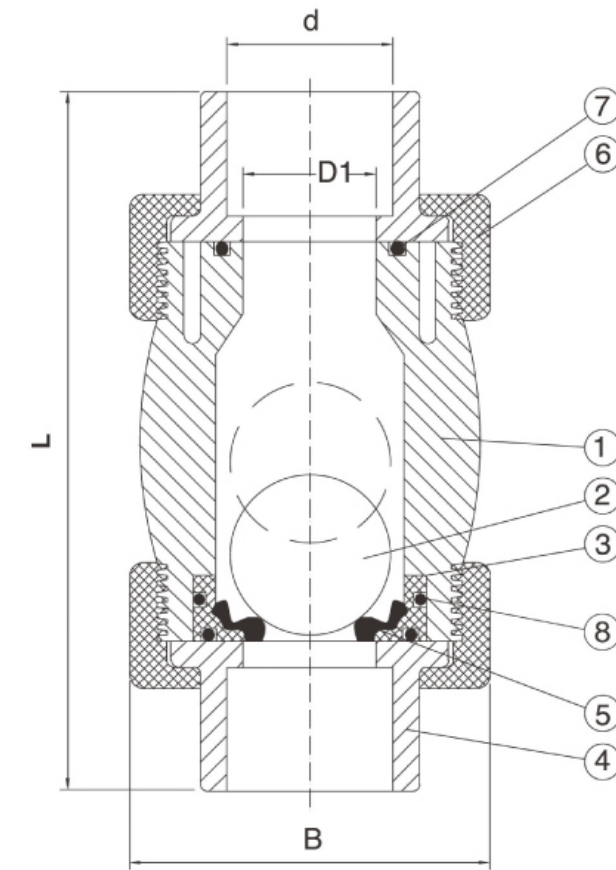
Nom Size DN(inch)	ANSI												Unit : inch	
	D1	D2	D3	n	e	H1	H2	H3	K	D4	L	L1	Test Press (lb/in ²)	Working Press (lb/in ²)
700 (28")	26.77	33.99	36.54	24	1.37	19.65	22.17	4.90	12.04	16	7.87	8.11	57	43
800 (32")	30.70	38.50	41.73	24	1.61	22.24	24.80	5.04	14.58	16	9.21	9.69	57	43
900 (36")	34.25	42.75	46.38	32	1.62	24.57	27.32	5.59	14.58	16	9.21	9.64	57	43
1000 (40")	38.18	46.25	50.63	32	1.62	26.93	30.00	8.27	18.54	20	11.57	11.85	57	43
1100 (44")	42.12	51.75	55.25	40	1.62	28.03	32.48	8.27	18.54	20	11.57	11.85	43	28
1200 (48")	46.06	56.00	59.52	44	1.62	30.55	34.48	8.27	18.54	20	11.57	11.85	43	28

Nom Size DN(inch)	DIN												Unit : mm	
	D1	D2	D3	n	e	H1	H2	H3	K	D4	L	L1	Test Press (kgf/cm ²)	Working Press (kgf/cm ²)
700 (28")	680	840	928	24	30	499	563	125	306	406	200	206	4	3
800 (32")	780	950	1060	24	33	565	630	128	370	406	234	246	4	3
900 (36")	870	1050	1178	28	33	624	694	142	370	406	234	245	4	3
1000 (40")	970	1175	1286	28	36	684	762	210	471	508	294	301	4	3
1100 (44")	1070	-	1403	-	-	712	825	210	471	508	294	301	3	2
1200 (48")	1170	-	1512	32	39	776	876	210	471	508	294	301	3	2

* 표준 치수는 PVC 재질 기준입니다.

TRUE UNION BALL CHECK VALVE (VERTICAL TYPE)

T H E R M O P L A S T I C V A L V E



15A(1/2") - 100A(4")

JX Series

트루 유니온 볼체크 밸브

- SOCKET JX100 / THREAD JX200
- SIZE | 15A(1/2") - 100A(4")

MATERIALS OF CONSTRUCTION

No.	Parts	Pcs	Materials
1	BODY	1	UPVC, PP, CPVC, PVDF
2	BALL	1	UPVC, CPVC, PVDF, PPG
3	SEAT CARRIER	1	UPVC, PP, CPVC, PVDF
4	END CONNECTOR	2	UPVC, PP, CPVC, PVDF
5	SEAT	1	EPDM, VITON
6	UNION NUT	2	UPVC, PP, CPVC, PVDF
7	O-RING	1	EPDM, VITON
8	SEAT CARRIER O-RING	65A-100A	EPDM, VITON

DIMENSIONS TABLE

Nom Size DN(inch)	JIS Unit : mm						ANSI Unit : inch					DIN Unit : mm						
	D1	d		L		B	D1	d		L		B	D1	d		L		B
		socket	Thread	socket	Thread			socket	Thread	socket	Thread			socket	Thread			
15 (1/2")	15.0	22	PT	101	101	53.5	0.598	0.848	NPT	3.976	3.976	2.016	15.0	20	R1/2	101	101	53.5
20 (3/4")	19.5	26	PT	115	115	63.3	0.771	1.058	NPT	4.527	4.527	2.492	19.5	25	R3/4	115	115	63.3
25 (1")	25.0	32	PT	156	156	73.0	0.984	1.325	NPT	5.345	5.345	2.874	25.0	32	R1	156	156	73.0
32 (1-1/4")	32.0	38	PT	171	171	97.5	1.259	1.670	NPT	6.732	6.732	3.842	32.0	40	R1-1/4	171	171	97.5
40 (1-1/2")	40.0	48	PT	171	171	97.5	1.574	1.912	NPT	6.732	6.732	3.842	40.0	50	R1-1/2	171	171	97.5
50 (2")	50.0	60	PT	195	195	120.5	1.968	2.387	NPT	7.677	7.677	4.744	50.0	63	R2	195	195	120.5
65 (2-1/2")	62.5	76	PT	226	226	150.0	2.460	2.889	NPT	8.860	8.860	5.900	62.5	75	R2-1/2	226	226	150.0
80 (3")	76.0	89	PT	274	274	184.0	3.000	3.515	NPT	10.710	10.710	7.240	76.0	90	R3	274	274	184.0
100 (4")	100.0	114	PT	367	367	199.0	3.940	4.518	NPT	14.370	14.370	7.830	100.0	110	R4	367	367	199.0

* 표준 치수는 PVC 재질 기준입니다.

SWING CHECK VALVE



JW Series

스윙 체크 밸브

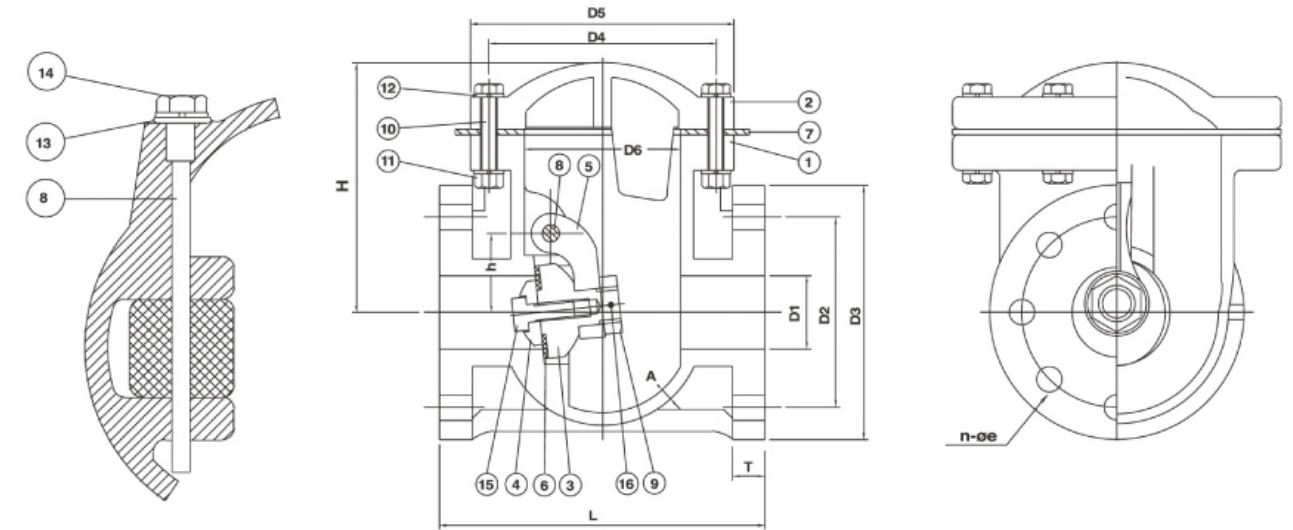
- JW300
- SIZE | 25A(1") - 200A(8")

MATERIALS OF CONSTRUCTION

No.	Parts	Pcs	Materials	No.	Parts	Pcs	Materials
1	BODY	1	UPVC, PP, CPVC, PPG, PVDF	9	DISC HOLDER	1	PP, PVDF
2	BONNET	1	UPVC, CPVC, PPG, PVDF	10	BOLTS	6 ... DN15-50 8 ... DN65-125 10 ... DN150 12 ... DN200	SUS304
3	DISC	1	UPVC, PP, CPVC, PPG, PVDF	11	NUTS		SUS304
4	SHEET GASKET HOLDER	1	UPVC, PP, CPVC, PPG, PVDF	12	WASHERS		SUS304
5	SWING ARMS	1	UPVC, PP, CPVC, PPG, PVDF	13	O-RING	1	EPDM, VITON
6	DISC GASKET	1	EPDM, VITON, TEFLON	14	SHAFT HOLDER	1	PVDF
7	BONNET GASKET	1	EPDM, VITON, TEFLON	15	SET BOLTS	1 ... DN15-80 3 ... DN100-125 4 ... DN150-200	PVDF
8	SHOFT	1	PP, PVDF	16	SET PIN	1	PVDF

DIMENSIONS TABLE

Nom Size DN(inch)	JIS														Unit : mm	
	D1	D2	D3	e	n No.of holes	D4	D5	D6	L	T	A	h	H	D	Test Press (kgf/cm ²)	Working Press (kgf/cm ²)
25 (1")	25	90	125.0	19	4	110	130	75	160	15	6	40	129	8	10	7
40 (1-1/2")	41	105	150.0	19	4	125	145	85	180	18	8	45	138	8	10	7
50 (2")	52	120	155.0	19	4	155	180	105	200	18	8	55	164	10	10	7
65 (2-1/2")	80	140	175.0	19	4	181	205	130	260	20	9	70	171	12	10	7
80 (3")	80	150	185.0	19	8	181	205	130	260	20	9	70	171	12	10	7
100 (4")	100	175	233.9	19	8	235	265	170	300	24	10	90	213	16	7	5
125 (5")	125	210	250.0	23	8	285	330	210	350	24	14	110	238	18	7	5
150 (6")	150	240	280.0	23	8	330	370	250	400	30	16	135	268	20	7	5
200 (8")	200	290	330.0	23	12	390	425	300	500	30	18	170	306	20	7	5



25A(1") - 200A(8")

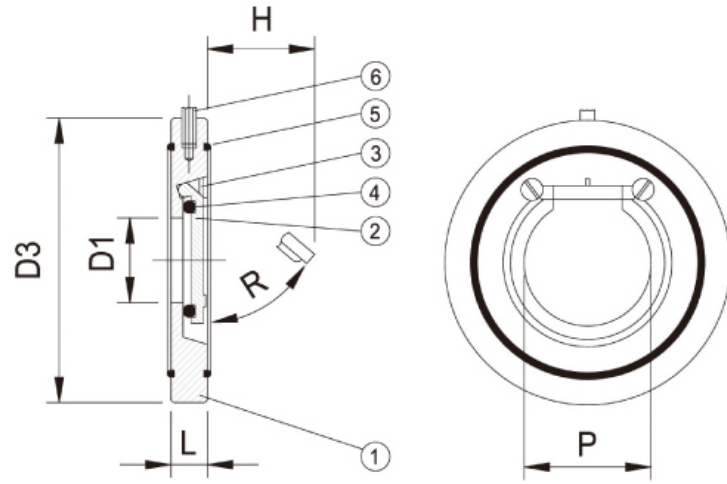
DIMENSIONS TABLE

Nom Size DN(inch)	ANSI														Unit : inch	
	D1	D2	D3	e	n No.of holes	D4	D5	D6	L	T	A	h	H	D	Test Press (lb/in ²)	Working Press (lb/in ²)
25 (1")	1.00	3.13	4.25	0.63	4	4.34	5.13	2.97	6.31	0.59	0.24	1.56	5.07	0.31	150	100
40 (1-1/2")	1.63	3.88	5.91	0.63	4	4.94	5.72	3.34	7.09	0.70	0.31	1.78	5.43	0.31	150	100
50 (2")	2.06	4.75	6.10	0.75	4	6.09	7.09	4.13	7.88	0.70	0.31	2.16	6.45	0.41	150	100
65 (2-1/2")	3.15	5.50	6.88	0.75	4	7.13	8.06	5.13	10.25	0.79	0.35	2.75	6.70	0.47	150	100
80 (3")	3.15	6.00	7.28	0.75	4	7.13	8.06	5.13	10.25	0.79	0.35	2.75	6.70	0.47	150	100
100 (4")	3.94	7.50	9.21	0.75	8	9.25	10.44	6.69	11.82	0.94	0.39	3.53	8.38	0.63	100	70
125 (5")	4.94	8.50	9.84	0.88	8	11.22	13.00	8.28	13.78	0.94	0.55	4.34	9.37	0.72	100	70
150 (6")	5.90	9.50	11.02	0.88	8	13.00	14.56	9.84	15.75	1.18	0.63	5.31	10.60	0.78	100	70
200 (8")	7.88	11.75	12.99	0.88	8	15.31	16.71	11.81	19.69	1.18	0.71	6.69	12.04	0.78	100	70

Nom Size DN(inch)	DIN														Unit : mm	
	D1	D2	D3	e	n No.of holes	D4	D5	D6	L	T	A	h	H	D	Test Press (kgf/cm ²)	Working Press (kgf/cm ²)
25 (1")	25	85	125.0	14	4	110	130	75	160	15	6	40	129	8	10	7
40 (1-1/2")	41	110	150.0	18	4	125	145	85	180	18	8	45	138	8	10	7
50 (2")	52	125	155.0	18	4	155	180	105	200	18	8	55	164	10	10	7
65 (2-1/2")	80	145	175.0	18	4	181	205	130	260	20	9	70	171	12	10	7
80 (3")	80	160	185.0	18	8	181	205	130	260	20	9	70	171	12	10	7
100 (4")	100	180	233.9	18	8	235	265	170	300	24	10	90	213	16	7	5
125 (5")	125	210	250.0	18	8	285	330	210	350	24	14	110	238	18	7	5
150 (6")	150	240	280.0	23	8	330	370	250	400	30	16	135	268	20	7	5
200 (8")	200	295	330.0	23	8	390	425	300	500	30	18	170	306	20	7	5

* 표준 치수는 PVC 재질 기준입니다.

WAFER CHECK VALVE



JT Series

웨이퍼 체크 밸브

- JT 300
- SIZE | 40A(1-1/2") - 600A(24")

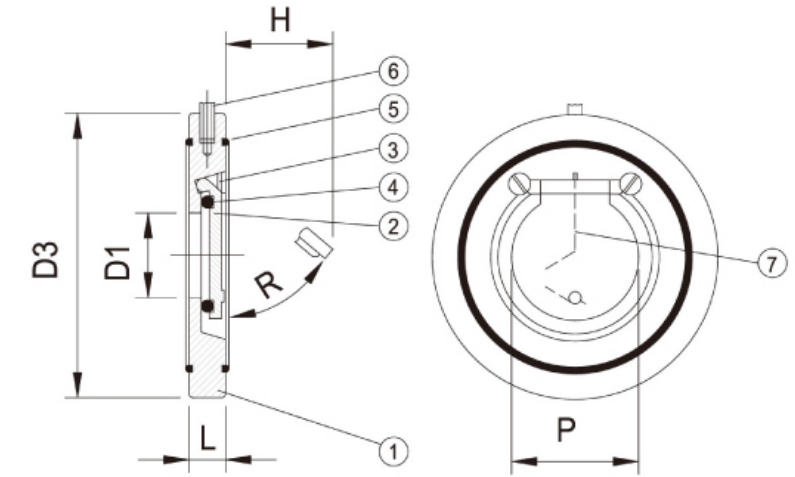
MATERIALS OF CONSTRUCTION

No.	Parts	Pcs	Materials	No.	Parts	Pcs	Materials
1	BODY	1	UPVC, PP, CPVC, PVDF	4	O-RING	1	EPDM, VITON
2	FLAPPER	1	UPVC, PP, CPVC, PVDF	5	O-RING	2	EPDM, VITON
3	FLAPPER MOUNTING SCREW	2	PP	6	INSTALLATION DEVICE	1	SUS316

DIMENSIONS TABLE

Nom Size DN(inch)	JIS Unit : mm					ANSI Unit : inch					DIN Unit : mm				
	D1	D3	P	L	H	D1	D3	P	L	H	D1	D3	P	L	H
40 (1-1/2")	23	95	35	16	25	0.89	3.76	1.38	0.63	0.99	23	95	35	16	25
50 (2")	32	109	45	20	46	1.26	4.30	1.77	0.79	1.80	32	109	45	20	46
65 (2-1/2")	40	130	60	20	51	1.57	5.12	2.36	0.79	2.00	40	130	60	20	51
80 (3")	54	145	72	20	74	2.13	5.71	2.83	0.79	2.90	54	145	72	20	74
100 (4")	70	164	90	22	91	2.76	6.45	3.54	0.87	3.60	70	164	90	22	91
125 (5")	92	196	109	22	96	3.64	7.72	4.28	0.87	3.77	92	196	109	22	96
150 (6")	112	220	132	26	147	4.40	8.66	5.19	1.02	5.80	112	220	132	26	147
200 (8")	150	275	176	35	191	5.90	10.82	6.93	1.38	7.50	150	275	176	35	191
250 (10")	190	330	222	40	229	7.48	12.99	8.74	1.57	9.00	190	330	222	40	229
300 (12")	216	380	260	45	259	8.62	14.96	10.23	1.77	10.20	216	380	260	45	259
350 (14")	266	440	300	49	245	10.47	17.32	11.81	1.93	9.64	266	440	300	49	245
400 (16")	310	491	340	65	285	12.20	19.33	13.38	2.56	11.22	310	491	340	65	285
450 (18")	350	541	390	68	330	13.78	21.30	15.35	2.67	13.00	350	541	390	68	330
500 (20")	400	596	440	78	385	15.75	23.46	17.32	3.07	15.15	400	596	440	78	385
600 (24")	450	700	490	85	430	17.72	27.55	19.29	3.34	16.92	450	700	490	85	430

WAFER CHECK VALVE (with springs)



JT Series

스프링부착 웨이퍼 체크 밸브

- JT 300S
- SIZE | 40A(1-1/2") - 600A(24")

MATERIALS OF CONSTRUCTION

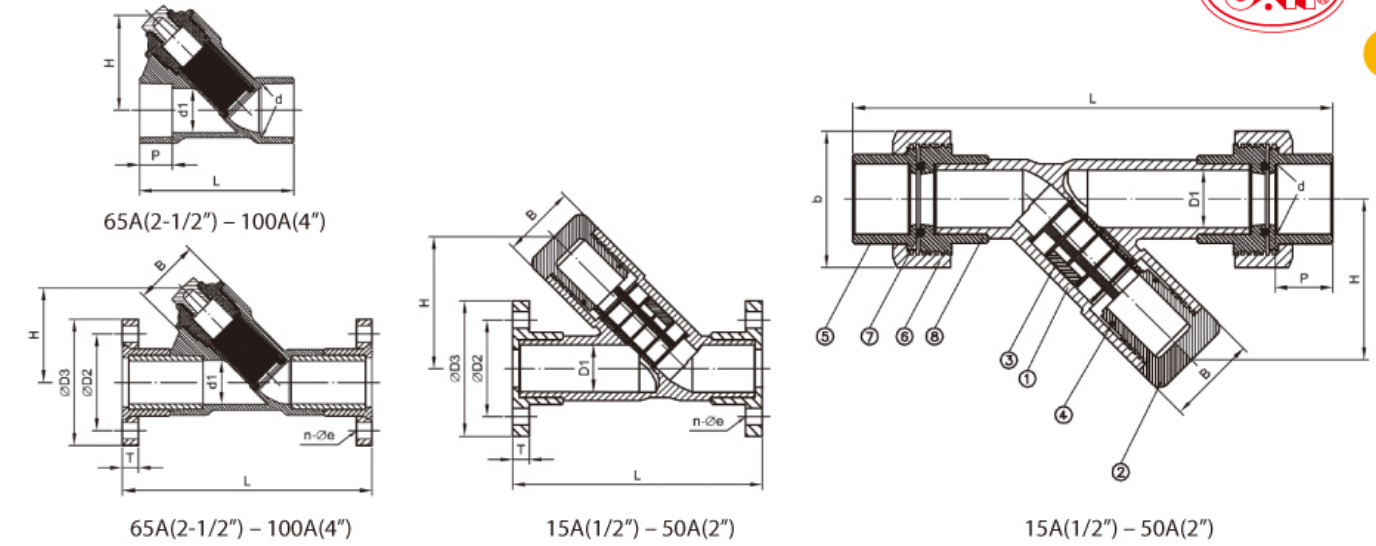
No.	Parts	Pcs	Materials	No.	Parts	Pcs	Materials
1	BODY	1	UPVC, PP, CPVC, PVDF	5	O-RING	2	EPDM, VITON
2	FLAPPER	1	UPVC, PP, CPVC, PVDF	6	INSTALLATION DEVICE	1	SUS316
3	FLAPPER MOUNTING SCREW	2	PP	7	SPRING	1	SUS316
4	O-RING	1	EPDM, VITON				

DIMENSIONS TABLE

Nom Size DN(inch)	JIS Unit : mm					ANSI Unit : inch					DIN Unit : mm				
	D1	D3	P	L	H	D1	D3	P	L	H	D1	D3	P	L	H
40 (1-1/2")	23	95	35	16	25	0.89	3.76	1.38	0.63	0.99	23	95	35	16	25
50 (2")	32	109	45	20	46	1.26	4.30	1.77	0.79	1.80	32	109	45	20	46
65 (2-1/2")	40	130	60	20	51	1.57	5.12	2.36	0.79	2.00	40	130	60	20	51
80 (3")	54	145	72	20	74	2.13	5.71	2.83	0.79	2.90	54	145	72	20	74
100 (4")	70	164	90	22	91	2.76	6.45	3.54	0.87	3.60	70	164	90	22	91
125 (5")	92	196	109	22	96	3.64	7.72	4.28	0.87	3.77	92	196	109	22	96
150 (6")	112	220	132	26	147	4.40	8.66	5.19	1.02	5.80	112	220	132	26	147
200 (8")	150	275	176	35	191	5.90	10.82	6.93	1.38	7.50	150	275	176	35	191
250 (10")	190	330	222	40	229	7.48	12.99	8.74	1.57	9.00	190	330	222	40	229
300 (12")	216	380	260	45	259	8.62	14.96	10.23	1.77	10.20	216	380	260	45	259
350 (14")	266	440	300	49	245	10.47	17.32	11.81	1.93	9.64	266	440	300	49	245
400 (16")	310	491	340	65	285	12.20	19.33	13.38	2.56	11.22	310	491	340	65	285
450 (18")	350	541	390	68	330	13.78	21.30	15.35	2.67	13.00	350	541	390	68	330
500 (20")	400	596	440	78	385	15.75	23.46	17.32	3.07	15.15	400	596	440	78	385
600 (24")	450	700	490	85	430	17.72	27.55	19.29	3.34	16.92	450	700	490	85	430

* 표준 치수는 PVC 재질 기준입니다.

Y-SEDIMENT STRAINERS



EY Series

Y 스트레이너

- SOCKET EY 100 / THREAD EY 200 / FLANGE EY 300
- SIZE | 15A(1/2") - 100A(4")

MATERIALS OF CONSTRUCTION

No.	Parts	Pcs	Materials
1	BODY	1	UPVC
2	LID	1	UPVC
3	SCREEN	1	UPVC
4	BODY O-RING	1	EPDM, VITON
5	CONNECTOR	2	UPVC
6	UNION NUT	2	UPVC
7	UNION O-RING	2	EPDM, VITON
8	FLANGE	2	PVC

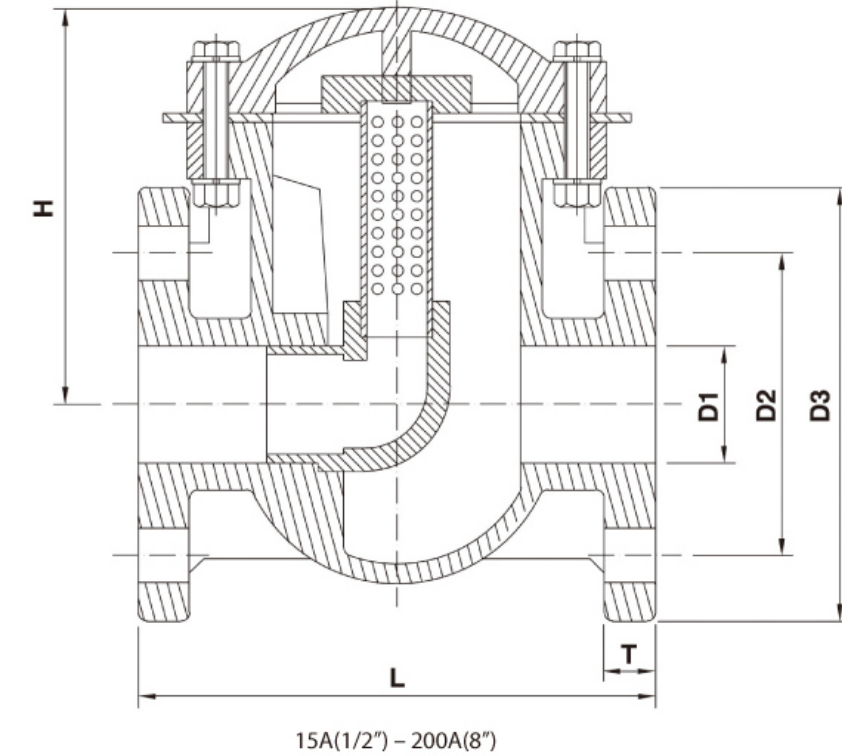
DIMENSIONS TABLE

Nom Size DN(inch)	JIS											Unit : mm			
	D1	D2	D3	d		øe	n	P	L			B	T	H	b
				Socket	Thread				Socket	Thread	Flange				
15 (1/2")	15.0	70	95	22	PT 1/2"	15	4	22.2	205.0	205.0	147.0	35.0	15	70.0	46
20 (3/4")	20.0	75	100	26	PT 3/4"	15	4	25.4	234.0	234.0	167.0	39.0	15	80.0	61
25 (1")	26.0	90	125	32	PT 1"	19	4	28.6	250.0	250.0	178.0	47.0	17	95.0	70
32 (1-1/4")	32.0	100	135	38	PT 1-1/4"	19	4	31.8	283.0	283.0	202.0	55.0	17	110.0	81
40 (1-1/2")	40.0	105	140	48	PT 1-1/2"	19	4	34.9	312.0	312.0	212.0	70.0	17	132.0	89
50 (2")	50.0	120	155	60	PT 2"	19	4	38.1	350.0	350.0	236.0	81.0	20	155.0	101
65 (2-1/2")	60.6	140	175	76	PT 2-1/2"	19	4	44.5	209.5	209.5	262.5	89.5	20	137.1	150
80 (3")	80.0	150	185	89	PT 3"	19	8	47.6	244.5	244.5	302.5	109.3	23	163.8	184
100 (4")	100.0	175	210	114	PT 4"	19	8	57.1	297.0	297.0	356.0	136.1	23	199.2	199

Nom Size DN(inch)	ANSI											Unit : inch			
	D1	D2	D3	d		øe	n	P	L			B	T	H	b
				Socket	Thread				Socket	Thread	Flange				
15 (1/2")	0.59	2.38	3.50	0.84	NPT 1/2"	0.63	4	0.88	8.07	8.07	5.79	1.37	0.59	2.76	1.81
20 (3/4")	0.79	2.75	3.88	1.05	NPT 3/4"	0.63	4	1.00	9.21	9.21	6.57	1.53	0.63	3.15	2.40
25 (1")	1.02	3.13	4.25	1.31	NPT 1"	0.63	4	1.13	9.84	9.84	7.01	1.85	0.67	3.74	2.76
32 (1-1/4")	1.26	3.50	4.63	1.66	NPT 1-1/4"	0.63	4	1.25	11.14	11.14	7.95	2.16	0.67	4.33	3.19
40 (1-1/2")	1.57	3.88	5.00	1.89	NPT 1-1/2"	0.63	4	1.38	12.28	12.28	8.35	2.75	0.71	5.20	3.50
50 (2")	1.97	4.75	6.00	2.37	NPT 2"	0.75	4	1.50	13.78	13.77	9.29	3.18	0.79	6.10	3.98
65 (2-1/2")	2.39	5.50	7.00	2.87	NPT 2-1/2"	0.75	4	1.75	8.25	8.25	10.33	3.52	0.79	5.40	5.91
80 (3")	3.15	6.00	7.50	3.49	NPT 3"	0.75	4	1.88	9.63	9.63	11.91	4.30	0.90	6.45	7.24
100 (4")	3.94	7.50	9.00	4.49	NPT 4"	0.75	8	2.25	11.69	11.69	14.02	5.36	0.90	7.84	7.83

Nom Size DN(inch)	DIN											Unit : mm			
	D1	D2	D3	d		øe	n	P	L			B	T	H	b
				Socket	Thread				Socket	Thread	Flange				
15 (1/2")	15.0	65	95	20	PT 1/2"	14	4	16.0	205.0	205.0	147.0	35.0	15	70.0	46
20 (3/4")	20.0	75	105	25	PT 3/4"	14	4	18.5	234.0	234.0	167.0	39.0	16	80.0	61
25 (1")	26.0	85	115	32	PT 1"	14	4	22.0	250.0	250.0	178.0	47.0	17	95.0	70
32 (1-1/4")	32.0	100	140	40	PT 1-1/4"	18	4	26.0	283.0	283.0	202.0	55.0	17	110.0	81
40 (1-1/2")	40.0	110	150	50	PT 1-1/2"	18	4	31.0	312.0	312.0	212.0	70.0	17	132.0	88
50 (2")	50.0	125	165	63	PT 2"	18	4	37.5	350.0	350.0	236.0	81.0	20	155.0	101
65 (2-1/2")	60.6	145	185	75	PT 2-1/2"	18	4	43.5	209.5	209.5	262.5	89.5	20	137.1	150
80 (3")	80.0	160	200	90	PT 3"	18	8	51.0	244.5	244.5	302.5	109.3	23	163.8	184
100 (4")	100.0	180	220	110	PT 4"	18	8	61.0	297.0	297.0	356.0	136.1	23	199.2	199

T-TYPE SEDIMENT STRAINERS



JS Series

T 스트레이너

- JS 300
- SIZE | 15A(1/2'') - 200A(8'')

MATERIALS OF CONSTRUCTION

MATERIALS	U-PVC, PP, CPVC, PPG, PVDF
SIZES	1/2", 3/4", 1", 1-1/4", 1-1/2", 2", 2-1/2", 3", 4", 5", 6", 8"
PRESSURE	Testing pressure : 1/2"~4": 10kg/cm ² 5"~8": 6kg/cm ² . Working pressure : 1/2"~4": 7kg/cm ² 5"~8": 4kg/cm ² .
END CONNECTIONS	Flange ends with in JIS ; DIN ; ANSI ; BS STANDARD
WORKING TEMP	U-PVC: 0°C~60°C, PP: -20°C~90°C, PPG: -20°C~100°C, CPVC: 0°C~90°C, PVDF: -40°C~120°C

DIMENSIONS TABLE

Nom Size DN(inch)	D1	L	D2			D3			T	H	SCREEN (mm)
			JIS	DIN	ANSI (inch)	JIS	DIN	ANSI (inch)			
15 (1/2'')	25	160	70	65	2.38	95	95	3.50	15	129	2.5
20 (3/4'')	25	160	75	75	2.76	100	105	3.86	15	129	2.5
25 (1'')	25	160	90	85	3.13	125	125	4.25	15	129	2.5
32 (1-1/4'')	41	180	100	100	3.50	135	135	4.60	18	138	2.5
40 (1-1/2'')	41	180	105	110	3.88	150	150	5.91	18	138	2.5
50 (2'')	52	200	120	125	4.74	155	155	6.10	18	164	2.5
65 (2-1/2'')	80	260	140	145	5.49	175	175	6.88	22	177	2.5
80 (3'')	80	260	150	160	6.00	200	200	7.87	22	177	2.5
100 (4'')	100	300	175	180	7.50	234	234	9.21	24	213	2.5
125 (5'')	125	350	210	210	8.50	250	250	9.84	24	238	2.5
150 (6'')	150	400	240	240	9.51	289	289	11.38	30	268	2.5
200 (8'')	200	500	290	295	11.75	330	330	12.99	30	306	2.5

CLEAN, HT, SCH80 PVC, CPVC, PP, PVDF 배관재, 자동밸브



Clean, HT PVC, SCH80 PVC, CPVC Pipe & Fittings (SEKISUI)



PVC, CPVC SCH80 Fittings & Valves (SPEARS)



SCH80 PVC, CPVC Pipe (HARVEL)



PP, PVDF Sheet (ROEHLING)



PFA Lined Ball, Butterfly, Diaphragm Valves (DOXI)



Durcor composite PTFE lined pipings (PUREFLEX)



주요제품

- CLEAN & HT PVC PIPE, FITTINGS & VALVES
- HP-PVDF, PVDF, PP PIPE & FITTINGS
- PFA, PTFE HOSE

- SCH80 PVC, CPVC PIPE, FITTINGS & VALVES
- 자동밸브(Pneumatic & Electric Actuators)
- FRP, PFA LINED BALL, BUTTERFLY, DIAPHRAGM VALVES



주식회사 엠엠피

(Modern Maintenance Products Co.,Ltd)

www.mmpkorea.com

본 사 | 경기도 시흥시 마유로 118번길 39호
(정왕동, 3라 715호)
Tel 031 494 0889 Fax 031 494 5163
E-mail mmp@mmpkorea.com

부산영업소 | Tel 051 319 2890 Fax 051 319 2893
구미영업소 | Tel 054 475 0612 Fax 054 475 0619