



PVDF & HP-PVDF



# PVDF and HP-PVDF PIPES / FITTING / FLANGE

PRODUCTS ARE GOOD AT CORRSION/  
CHEMICAL RESISTANCE.



PIPES/FITTING/FLANGE



**協羽機材工業股份有限公司**  
**SHIE YU MACHINE PARTS INDUSTRIAL CO., LTD.**

**總公司 / 台中縣清水鎮海濱路336-16號**  
**HEAD OFFICE** No.336-16 Hai pin Rd., Ching Shui Chen Taichung Taiwan R.O.C.  
Tel:886-4-2626 6926 (代表號)  
Fax:886-4-2626 7169 886-4-2627 3692  
E-mail:sale02@shvalve.com.tw  
http://www.shieyu-valve.com.tw



ISO 9001



**台北分公司 / 台北市八德路二段382號**  
**TAIPEI OFFICE** No.382 Pa-der Rd. Sec. 2, Taipei Taiwan R.O.C.  
Tel:886-2-2776 2186 Fax:886-2-2711 0218 886-2-2731 8358  
E-mail:avco@ms31.hinet.net

**高雄分公司 / 高雄縣大發工業區莒光二街一號**  
**KACHUNG OFFICE** No.1, Chu-Kwang 2<sup>nd</sup> Street Ta-Fa Industrial Park Kaohsiung Taiwan R.O.C.  
Tel:886-7-788 8678 Fax:886-7-787 7869

**昆山分公司 / 江蘇省昆山市城北成功路158號**  
**KUNSHAN OFFICE** No.158 Chen Kung Rd., Chenpei Kunshan City Jiangsu Province China  
Tel:86-512-5777 5296 Fax:86-512-5777 5299  
E-mail:shie-yu@far-east.net





## 公司簡介

大發管材工業股份有限公司是屬協羽機材工業集團旗下公司，專業製造生產各種塑膠管、配件及閥門。協羽集團成立於1972年，一向致力於化學工業、電子業及公共工程等，品質技術均達到國際水準；大發公司目前擁有二個工廠：全體員工246人，全集團生產廠均通過ISO 9001認證及美國衛生協會認證NSF合格廠。並取得國家標準9項CNS正字標記產品認證及行政院環保署環保標章。另PP-H、PVDF產品正式生產無塵室所用超純水HP-PP、HP-PVDF 漸淨管、配件及閥門。

## 產品三大特色

1. 生產材質最齊全：有UPVC、HIW-PVC、CPVC (HT-PVC)、HD-PE、PP-H、ABS、PVDF等七種原料製造。不同生產設備在同一工廠生產目前是世界唯一。
2. 生產尺寸規格最大最齊全：生產尺寸UPVC1/2"~24"、HIW-PVC 1/2"~24"、CPVC (HT-PVC) 1/2"~24"、HD-PE  $\phi$  12~ $\phi$  1200mm、PP-H  $\phi$  12~ $\phi$  1200mm、ABS  $\phi$  12~ $\phi$  630mm、PVDF  $\phi$  12~ $\phi$  630mm。生產規格符合世界各國使用，如日本規格JIS、美國規格ANSI SCH80、SCH40、德國規格DIN PN2.5至PN30，英國BS規格，或其它客戶指定之特殊規格均可供應。
3. 直管、配件及閥門為同一家生產廠全方位產品鏈供應，目前是最齊全的供應商，能滿足業界一次性最佳服務。

產品廣泛使用在化工用管、工業用管及半導體用管、重大公共工程用管上如電力公司潛纜工程用管、自來水用管、電信寬頻及交控用管、瓦斯用管、污水用管、溫泉用管、海上養殖用管、及半導體漸淨用管等均大量採用，目前更與台塑關係企業、中鋼、欣統瓦斯、新營瓦斯、等等...訂有年度統購合約，並為其它國內各大製造廠、化學工廠與半導體業、電子業及海內外國際市場50幾個國家等特別指定採用，並獲得一致好評。



董事長 蔡添壽 CHAIRMAN TSAI TIEN-SHOU

## Company Profile

DURA FLOW PIPE INDUSTRIAL CO. LTD., is an affiliate of the SHIE YU MACHINE GROUP, and was established to manufacture all kinds of plastic pipes, accessories and valves for professional applications. Incorporated in 1972, the SHIE YU GROUP has been involving in the fields of chemical engineering, electronic industry and public works, and our quality and techniques have attained international standards. Currently, DURA FLOW PIPE INDUSTRIAL CO. LTD., possesses two factories under which some 246 employees are hired, and the certifications granted for our factories include ISO9001 and NSF of the American Public Health Association (APHA) together with 9 authentic marks for CNS certification and the environmental protection badge issued by Environmental Protection Administration of the Executive Yuan. In addition, our PP-H and PVDF factories have also launched the manufacturing of pure-water HP-PP, HP-PVDF cleaning pipe.

## Three main product features:

1. Complete range of production materials: We provide the production of UPVC, HIW-PVC, CPVC (HT-PVC), HD-PE, PP-H, ABS and PVDF, and we are the only company of the world that uses different production equipment in one factory.
2. Largest and most complete range of production specifications: The dimensions of production include UPVC 1/2"~24", HIW-PVC 1/2"~24", CPVC(HT-PVC) 1/2"~24", HD-PE  $\phi$  12~ $\phi$  1200mm, PP-H  $\phi$  12~ $\phi$  1200mm, ABS  $\phi$  12~ $\phi$  630mm and PVDF  $\phi$  12~630mm. Our production specifications meet the requirements of relevant world standards, such as JIS, ANSI SCH80, SCH40, DIN PN2.5 to PN30 and BS specifications. Further, we also provide special specifications designated by the customer.
3. Straight pipes, accessories and valves are manufactured by the same factory and supplied through all-area product chain. As such, we are the fully equipped supplier that can satisfy the customers by providing the best one-stop services.

Our pipes are widely used in chemical engineering, industrial, semiconductor, major public work sectors, such as the drilling pipes of the Taiwan Power Company, tap water pipes, telecommunication broadband and traffic control pipes, gas pipes, sewage pipes, hot spring pipes, sea fishery pipes, and semiconductor cleaning pipes, etc. Further we also signed yearly procurement contracts with the subsidiaries of Formosa Plastic Co., Ltd., China Steel Corporation, Shin Tao Gas Co., Ltd. and Shin Yin Gas Co., Ltd., and our products have also been specially designated by domestic major construction companies, chemical plants, semiconductor firms and electronic firms, as well as major companies in over 50 countries, with positive affirmation.



## 創新研發

我們應用先進技術，創新研發保有競爭力，針對生產製造不斷的提昇，使產品呈現國際水準。再加上自有的模具廠（有完整的全套開模的軟、硬體設備）及專業的設計及技術人員，整個研發團隊提供快速精確之模具設計生產來滿足客戶及市場的需求。並與國際知名品牌廠商建立 OEM、ODM設計生產合作，建立良好的密切互動關係。

## INNOVATION AND R&D

We maintain our competitiveness by the application of advanced technology and innovative research and development. Further, action has also been taken to enhance our capacity in manufacturing so as to present world-class product quality. With in-house mold factory (provided with complete range of mold developing software and hardware equipment) as well as professional design and technicians, our R&D Team provide fast, accurate mold design and development to meet customer and market demands. In addition, we also developed OEM, ODM design and fabrication cooperation programs with world-famed brands and have established well-based mutual interaction relationship.







QUALITY CONTROL

**Advanced Production Equipment  
Sophisticated Experimental Instruments**

Excellent products derive from precision machinery equipment and raw materials. For this purpose, we have introduced the Fully-automated Extrusion Machine production line from Austria's CINCINATI and advanced machinery equipment from German's BATTENFIELD. Further, we also possess the world's largest computer-based Automatic Injection Machine, which can yield 126kg of CPVC material in one molding process. The materials selected by us are superior in quality, and are analyzed and tested to ensure they meet specification standards before putting into production. Our laboratory has a complete set of testing/inspection equipments to test, inspect and judge the product properties in comprehensive manner so that they may be used as the basis of selection. We control quality before delivery and ensure quality after, to guarantee superior products are delivered.

**先進生產設備·精良實驗儀器**

優良的產品要有精密機械設備及原物料，本公司引進先進國家奧地利CINCINATI公司全自動押出成型機生產線、德國品牌BATTENFIELD公司等先進精良機械設備；及特別擁有世界第一超大型電腦全自動射出成型機，尤其是生產CPVC原料一次成型可達126公斤；我們慎選優良品質原料，對原料加以分析測試，確定符合規範標準方可上線生產。我們實驗室有最齊全的檢測設備，可以將原物料，產品的物性做完全檢測判定，做為選用之依據，出貨前品質的掌握及產品出貨後品質確保，以達全面優良產品為目標。



ADVANCED EQUIPMENT

**經營展望**

大發公司一向以“品質第一”、“技術領先”、“客戶滿意”為宗旨。DFP的產品銷售全世界均有完善服務團隊，因此我們希望在塑膠管、配件及閥門的專業領域上，能提供更完整的產品系列促進最佳選擇。客戶的需求是我們最大的前進動力，我們以達成客戶滿意為最大目標，因此國內外各大工程公司及民營企業均成為我們長期客戶，並與國外知名品牌廠商建立OEM良好合作關係並大量生產供應。我們的職志將+DFP+產品成為國際各種塑膠管、配件、閥門的優良品牌。產品將滿足客戶獲得最大的肯定。

**Operational Outlook**

Abiding by the conviction of "Quality First", "Technology Oriented" and "Customer Satisfaction", our well-planned service team has been organized by DFP for distributing our products to the world. On this basis, it is our wish to provide a more complete product series that offers the best choices in the professional field of plastic pipes, accessories and valves. Customer demand is the key driving force to our progress and we put customer satisfaction as our ultimate goal. For this reason, we are able to establish long-term business relationship with major construction companies and private firms in local and overseas marketplaces. Further, we have also maintained mutual OEM cooperation relationship with famed overseas brands in carrying out massive production and supply. Our final goal is to develop "+DFP+ product" as a representing name for excellent brand in the field of plastic pipes, accessories and valves in international market. To this extent, our products will satisfy every customer.



化學工業  
Chemical Industry

電子半導體  
Electronic /  
Semiconductor Industry

國際參展  
International Exhibition

海水碼頭  
Seawater  
Wharf

HD-PE自來水管  
HD-PE Portable Water Refining

海水養殖業  
Sea Farming Industry

石化工業使用  
Petrochemical Industry



產品認證

產品通過認證如下:

- \*全生產廠全部通過 ISO9001 認證合格
- \*美國衛生協會認證 NSF 合格廠
- \*行政院環保署環保標章合格廠
- \*取得國家標準 9 項 CNS 正字標記產品認證如下:

CNS 編號	類號	產品名稱
4053-1	K3033-1	自來水用聚氯乙稀塑膠硬質管
1298	K3004	聚氯乙稀塑膠硬質管
1302	K3006	導電線用聚氯乙稀塑膠硬質管
14345	K3114	耐衝擊硬質聚氯乙稀塑膠管
14664	K3121	氯化聚氯乙稀 (CPVC) 塑膠管
2456	K3012	自來水用聚乙稀塑膠管
2458	K3013	化學工業及一般用高密度聚乙稀塑膠管
12835	K3097	天然氣用聚乙稀塑膠管
13158	K3102	自來水用丙稀 - 丁二烯 - 苯乙烯 (ABS) 塑膠管

Listed below are certifications honored for our products:

- All our factories have been honored with ISO9001 Certification.
- One factory qualified for NSF certification.
- One factory honored with the environmental protection badge by the Environmental Protection Administration of the Executive Yuan.
- Listed below are 9 authentic marks certified by CNS:

CNS General Number	Category Number	Product Name
4053-1	K3033-1	Tap Water Hardened PVC Pipe
1298	K3004	Hardened PVC Pipe
1302	K3006	Conductive Wire Hardened PVC Pipe
14345	K3114	Impact-resistant Hardened PVC Pipe
14664	K3121	CPVC Pipe
2456	K3012	Tap Water PE Pipe
2458	K3013	Chemical Industry and General Purpose HDPE Pipe
12835	K3097	Natural Gas PE Pipe
13158	K3102	Tap Water ABS Pipe



# PVDF 目錄索引

公司簡介 Company Profile	1	法蘭鐵片 JIS BACKING RINGS (JIS)	29	旋轉凡而(手把式) BUTTERFLY VALVE (Lever handle type)	49
目錄索引 Catalogue Index	6	對接內牙、外牙閘接頭 FEMALE、MALE ADAPTOR (b/w)	30	旋轉凡而(齒輪式) BUTTERFLY VALVE GEAR OPERATOR FULL FLANGED TYPE	50
PVDF 管 PVDF Pipe	7	套接三通、平接頭 TEE、COUPLING (s/w)	31	原料物性表 Material Properties	51
對接三通 TEE (b/w)	8	套接90度、45度彎頭 ELBOWS 90°、ELBOWS 45° (s/w)	32	施工方法、注意事項 Installation & Cautions	52
對接異徑三通 REDUCED TEE (b/w)	9	套接大小頭 REDUCER COUPLING (s/w)	33	<b>PVDF/FRP</b>	
對接90度月彎 BENDS 90° (b/w)	12	套接內牙、外牙閘接頭 FEMALE、MALE ADAPTOR (s/w)	34	PVDF外覆FRP管 PVDF/FRP PIPE	56
對接90度彎頭 BENDS 90° (b/w)	13	套接法蘭頭、套接管帽 STUB FLANGES、CAP (s/w)	35	三通PVDF(PVDF外覆FRP) TEE	57
對接45度彎頭 ELBOWS 45° (b/w)	14	對接油任、套接油任 UNION (b/w)、UNION (s/w)	36	異徑三通PVDF(PVDF外覆FRP) REDUCED TEE	58
手工對接30度彎頭 ELBOWS 30° (b/w)	15	圓棒、焊條 ROUND BARS、WELDING ROD	37	90度彎頭PVDF(PVDF外覆FRP) BENDS 90°	61
手工對接15度彎頭 ELBOWS 15° (b/w)	16	盲法蘭 DIN BLIND FLANGES (DIN)	38	45度彎頭PVDF(PVDF外覆FRP) ELBOWS 45°	62
手工對接Y型三通 Y-TEE (b/w)	17	盲法蘭 ANSI BLIND FLANGES (ANSI)	39	手工Y型三通PVDF (PVDF外覆FRP)Y-TEE	63
手工對接異徑Y型三通 REDUCER Y-TEE (b/w)	18	盲法蘭 JIS BLIND FLANGES (JIS)	40	手工異徑Y型三通PVDF(PVDF外覆FRP) REDUCER Y-TEE(B/W)	64
手工對接四通 CROSS (b/w)	21	面對面球閥 TRUE UNION BALL VALVE (Butt Welding type)	41	手工對接四通PVDF(PVDF外覆FRP) CROSS	67
對接塔型大小頭 REDUCER CONCENTRIC (b/w)	22	安全球閥加埋銅座 TRUE UNION SAFETY BLOCK BALL VALVE WITH MOUNTING PADS	42	大小頭PVDF(PVDF外覆FRP) REDUCER COUPLING	68
對接大小頭 REDUCER COUPLING (b/w)	23	油任式隔膜閥 DIAPHRAGM VALVE (Union Type)	43	管帽PVDF(PVDF外覆FRP) CAP	70
對接管帽 CAP (b/w)	25	隔膜凡而(法蘭式) DIAPHRAGM VALVE (Flanged Type)	44	法蘭接頭PVDF(PVDF外覆FRP) STUB FLANGES	71
對接法蘭接頭 STUB FLANGES (b/w)	26	單片逆止閥 WAFER CHECK VALVE	46	支架標準 Standard of Bracket Supporting	72
法蘭鐵片 DIN BACKING RINGS (DIN)	27	單片逆止閥(有彈簧) WAFER CHECK VALE (WITH SPRINGS)	47		
法蘭鐵片 ANSI BACKING RINGS (ANSI)	28	對接逆止閥 TRUE UNION BALL CHECK VALVE 48 (VERTICAL TYPE)	48		



# PVDF/PVDF(FRP COATED) PIPE FITTING VALVE

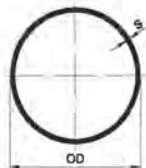


# PVDF/PVDF(FRP COATED) PIPE FITTING VALVE

## PVDF PIPE

Liner, PN10, PN16, PN20  
for butt welding  
Tekwelding IR-welding  
BCF-welding  
socket welding

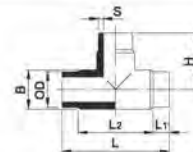
直管  
DFP PIO



OD (mm)	LINER		SDR33 ISO S16 PN10			SDR21 ISO S10 PN16			SDR17 ISO S8 PN20		
	S (mm)	Weight (Kg/m)	Code	S (mm)	Weight (Kg/m)	Code	S (mm)	Weight (Kg/m)	Code	S (mm)	Weight (Kg/m)
16	-	-	-	-	-	-	-	-	51-PIO-17-0016	1.5	0.14
20	-	-	-	-	-	51-PIO-21-0020	1.9	0.21	51-PIO-17-0020	1.9	0.21
25	-	-	-	-	-	51-PIO-21-0025	1.9	0.27	51-PIO-17-0025	1.9	0.27
32	2.4	0.44	-	-	-	51-PIO-21-0032	2.4	0.44	51-PIO-17-0032	2.4	0.44
40	2.4	0.55	-	-	-	51-PIO-21-0040	2.4	0.55	51-PIO-17-0040	2.4	0.55
50	2.5	0.73	-	-	-	51-PIO-21-0050	3.0	0.85	51-PIO-17-0050	3.0	0.85
63	2.5	0.93	51-PIO-33-0063	2.0	0.72	51-PIO-21-0063	3.0	1.09	51-PIO-17-0063	3.8	1.29
75	2.5	1.11	51-PIO-33-0075	2.3	1.03	51-PIO-21-0075	3.6	1.55	51-PIO-17-0075	4.5	1.83
90	2.8	1.48	51-PIO-33-0090	2.8	1.48	51-PIO-21-0090	4.3	2.22	51-PIO-17-0090	5.4	2.80
110	3.0	1.94	51-PIO-33-0110	3.4	2.20	51-PIO-21-0110	5.3	3.32	51-PIO-17-0110	6.6	3.90
125	3.0	2.21	51-PIO-33-0125	3.9	2.84	51-PIO-21-0125	6.0	4.24	-	-	-
140	3.0	2.48	51-PIO-33-0140	4.3	3.52	51-PIO-21-0140	6.7	5.31	-	-	-
160	3.0	2.85	51-PIO-33-0160	4.9	4.54	51-PIO-21-0160	7.7	6.96	-	-	-
180	3.0	3.21	51-PIO-33-0180	5.5	5.74	51-PIO-21-0180	8.6	8.74	-	-	-
200	3.0	3.85	51-PIO-33-0200	6.2	7.19	51-PIO-21-0200	9.6	10.83	-	-	-
225	3.0	4.03	51-PIO-33-0225	6.9	8.95	51-PIO-21-0225	10.8	13.67	-	-	-
250	3.0	4.48	51-PIO-33-0250	7.7	11.09	51-PIO-21-0250	11.9	16.73	-	-	-
280	3.5	5.87	51-PIO-33-0280	8.6	13.86	51-PIO-21-0280	13.4	21.11	-	-	-
315	4.0	7.47	51-PIO-33-0315	9.7	17.55	51-PIO-21-0315	15.0	26.51	-	-	-
355	4.0	8.43	51-PIO-33-0355	10.9	22.00	-	-	-	-	-	-
400	5.0	11.81	51-PIO-33-0400	12.3	28.03	-	-	-	-	-	-
450	5.0	13.30	51-PIO-33-0450	13.7	35.31	-	-	-	-	-	-
500	-	-	51-PIO-33-0500	15.2	48.0	-	-	-	-	-	-
560	-	-	51-PIO-33-0560	17.0	62.0	-	-	-	-	-	-
630	-	-	51-PIO-33-0630	19.1	73.0	-	-	-	-	-	-

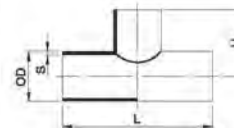
## PVDF TEE

reinforced  
for butt welding  
molded from PVDF  
對接正三通  
DFP TT1



OD (mm)	H (mm)	L (mm)	L1 (mm)	L2 (mm)	B (mm)	SDR33 ISO S16 PN10		SDR21 ISO S10 PN16	
						Code	S (mm)	Code	S (mm)
20	35.0	70.0	15.0	40.0	21.0	-	-	51-TT1-21-0020	1.9
25	40.0	80.0	15.0	50.0	26.0	-	-	51-TT1-21-0025	1.9
32	47.75	89.0	17.0	55.0	33.4	-	-	51-TT1-21-0032	2.4
40	50.0	101.5	15.0	71.5	42.0	-	-	51-TT1-21-0040	2.4
50	80.0	122.0	23.0	78.0	52.0	-	-	51-TT1-21-0050	3.0
63	75.5	150.0	27.0	86.0	65.0	51-TT1-33-0063	2.0	51-TT1-21-0063	3.0
75	87.5	176.0	28.0	120.0	76.8	51-TT1-33-0075	2.3	51-TT1-21-0075	3.6
90	91.75	182.0	32.5	117.0	93.5	51-TT1-33-0090	2.8	51-TT1-21-0090	4.3
110	110.5	217.5	34.5	148.5	114.0	51-TT1-33-0110	3.4	51-TT1-21-0110	5.3
125	119.5	239.0	35.0	169.0	133.0	51-TT1-33-0125	3.9	51-TT1-21-0125	6.0
140	126.0	252.0	35.0	182.0	150.0	51-TT1-33-0140	4.3	51-TT1-21-0140	6.7
160	137.0	274.0	35.0	204.0	170.0	51-TT1-33-0160	4.9	51-TT1-21-0160	7.7
180	158.5	317.0	35.0	247.0	190.0	51-TT1-33-0180	5.5	51-TT1-21-0180	8.6
200	168.0	338.0	35.0	266.0	210.0	51-TT1-33-0200	6.2	51-TT1-21-0200	9.6
225	170.0	340.0	40.0	260.0	235.0	51-TT1-33-0225	6.9	51-TT1-21-0225	10.8
250	209.0	418.0	45.0	328.0	282.0	51-TT1-33-0250	7.7	51-TT1-21-0250	11.8
280	257.0	514.0	70.0	374.0	284.0	51-TT1-33-0280	8.8	51-TT1-21-0280	13.4
315	275.0	550.0	70.0	410.0	331.0	51-TT1-33-0315	9.7	51-TT1-21-0315	15.0

PVDF TEE  
molded from PVDF  
(Fabricated)  
for butt welding  
手工對接正三通  
DFP TT4



OD (mm)	H (mm)	L (mm)	SDR33 ISO S16 PN10		SDR21 ISO S10 PN16	
			Code	S (mm)	Code	S (mm)
355	180	675	51-TT4-33-0355	10.9	-	-
400	180	760	51-TT4-33-0400	12.3	-	-
450	200	850	51-TT4-33-0450	13.7	-	-
500	220	940	51-TT4-33-0500	15.2	-	-
560	240	1040	51-TT4-33-0560	17.0	-	-
630	250	1130	51-TT4-33-0630	19.1	-	-

手工製品(Fabricated)



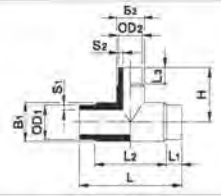


# PVDF/PVDF(FRP COATED) PIPE FITTING VALVE



# PVDF/PVDF(FRP COATED) PIPE FITTING VALVE

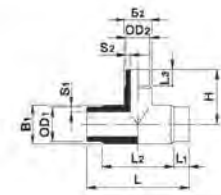
**REDUCER TEE**  
molded form PVDF  
for butt welding  
對接異徑三通  
DFP TR1



OD1/OD2 (mm)	H (mm)	L (mm)	L1 (mm)	L2 (mm)	L3 (mm)	B1 (mm)	B2 (mm)	SDR33 ISO S16 PN10		SDR21 ISO S10 PN16	
								Code	S (mm)	Code	S (mm)
83-32	88.5	124.0	26	72.0	26	65.0	33.4	-	-	51-TR1-21-063032	3.024
63-60	88.5	124.0	26	72.0	26	65.0	52.0	-	-	51-TR1-21-063050	3.030
75-50	74.5	127.0	26	75.0	26	76.8	52.0	-	-	51-TR1-21-075050	3.630
75-63	74.5	127.0	26	75.0	26	76.8	65.0	51-TR1-33-075063	2.320	51-TR1-21-075063	3.630
90-63	85.2	153.8	26	101.8	26	93.5	65.0	51-TR1-33-090063	2.820	51-TR1-21-090063	4.330
90-75	85.2	153.8	26	101.8	26	93.5	76.8	51-TR1-33-090075	2.823	51-TR1-21-090075	4.336
△ 110-32	101	218	-	-	-	-	-	-	-	51-TR1-21-110032	6.324
△ 110-40	101	218	-	-	-	-	-	-	-	51-TR1-21-110040	5.324
△ 110-50	101	218	-	-	-	-	-	-	-	51-TR1-21-110050	5.330
110-63	101	218	30	158	26	114	65.0	51-TR1-33-110063	3.420	51-TR1-21-110063	5.330
△ 110-75	101	218	-	-	-	-	-	51-TR1-33-110075	3.423	51-TR1-21-110075	5.336
110-90	101	218	30	158	29	114	93.5	51-TR1-33-110090	3.428	51-TR1-21-110090	5.343
△ 125-40	108	214	-	-	-	-	-	-	-	51-TR1-21-125040	8.024
△ 125-50	108	214	-	-	-	-	-	-	-	51-TR1-21-125050	6.030
△ 125-63	108	214	35	144	26	130	65.0	-	3.920	51-TR1-21-125063	8.030
125-75	108	214	35	144	26	130	76.8	51-TR1-33-125075	3.923	51-TR1-21-125075	8.036
125-90	108	214	35	144	26	130	93.5	51-TR1-33-125090	3.926	51-TR1-21-125090	8.043
125-110	108	214	35	144	30	130	114.0	51-TR1-33-125110	3.934	51-TR1-21-125110	8.053
△ 140-50	114	214	-	-	-	-	-	-	-	51-TR1-21-140050	6.730
△ 140-63	114	214	35	144	26	148	65.0	51-TR1-33-140063	4.320	51-TR1-21-140063	8.730
140-75	114	214	35	144	26	148	76.8	51-TR1-33-140075	4.323	51-TR1-21-140075	8.736
140-90	114	214	35	144	26	148	93.5	51-TR1-33-140090	4.328	51-TR1-21-140090	8.743
140-110	114	214	36	144	30	148	114.0	51-TR1-33-140110	4.334	51-TR1-21-140110	8.753
△ 140-125	114	214	-	-	-	-	-	51-TR1-33-140125	4.339	51-TR1-21-140125	6.760
160-63	126	286	36	144	26	167	65.0	51-TR1-33-160063	4.920	51-TR1-21-160063	7.730
△ 160-75	126	286	-	-	-	-	-	51-TR1-33-160075	4.923	51-TR1-21-160075	7.736
160-90	133	286	35	144	26	167	93.5	51-TR1-33-160090	4.926	51-TR1-21-160090	7.743
160-110	133	286	35	144	29	167	114.0	51-TR1-33-160110	4.934	51-TR1-21-160110	7.753
160-125	133	286	-	-	-	-	-	51-TR1-33-160125	4.939	51-TR1-21-160125	7.760
160-140	133	286	-	-	-	-	-	51-TR1-33-160145	4.943	51-TR1-21-160140	7.767
△ 180-63	144	220	35	150	26	188	65.0	51-TR1-33-180063	5.520	51-TR1-21-180063	8.630
△ 180-75	144	220	35	150	26	188	76.8	51-TR1-33-180075	5.523	51-TR1-21-180075	8.636
180-90	144	220	35	150	26	188	93.5	51-TR1-33-180090	5.526	51-TR1-21-180090	8.643
180-110	144	220	35	150	30	188	114.0	51-TR1-33-180110	5.534	51-TR1-21-180110	8.653
180-125	144	220	35	150	36	188	130.0	51-TR1-33-180125	5.539	51-TR1-21-180125	8.660
△ 180-140	144	220	-	-	-	-	-	51-TR1-33-180140	5.543	51-TR1-21-180140	8.667
△ 180-160	144	220	-	-	-	-	-	51-TR1-33-180160	5.549	51-TR1-21-180160	8.677

△ 轉接品(Transition)

**REDUCER TEE**  
(Fabricated)  
molded form PVDF  
for butt welding  
對接異徑三通  
DFP TR1



OD1/OD2 (mm)	H (mm)	L (mm)	L1 (mm)	L2 (mm)	L3 (mm)	B1 (mm)	B2 (mm)	SDR33 ISO S16 PN10		SDR21 ISO S10 PN16	
								Code	S (mm)	Code	S (mm)
△ 200-63	157	273	35	203	26	208	65.0	51-TR1-33-200063	6.220	51-TR1-21-200063	9.630
△ 200-90	157	273	35	203	28	208	93.5	51-TR1-33-200090	6.226	51-TR1-21-200090	9.643
200-110	157	273	35	203	30	208	114.0	51-TR1-33-200110	6.234	51-TR1-21-200110	9.653
200-125	157	273	35	203	35	208	130.0	51-TR1-33-200125	6.239	51-TR1-21-200125	9.660
200-140	157	273	35	203	35	208	146.0	51-TR1-33-200140	6.243	51-TR1-21-200140	9.667
200-160	157	273	35	203	35	208	167.0	51-TR1-33-200160	6.249	51-TR1-21-200160	9.677
△ 200-180	157	273	-	-	-	-	-	51-TR1-33-200180	6.255	51-TR1-21-200180	9.686
△ 225-75	171.5	306	40	228	28	235	76.8	51-TR1-33-225075	6.923	51-TR1-21-225075	10.836
△ 225-90	171.5	306	40	228	28	235	93.5	51-TR1-33-225090	6.928	51-TR1-21-225090	10.843
△ 225-110	171.5	306	40	228	30	235	114.0	51-TR1-33-225110	6.934	51-TR1-21-225110	10.853
225-125	171.5	306	40	228	35	235	130.0	51-TR1-33-225125	6.939	51-TR1-21-225125	10.860
△ 225-140	171.5	306	-	-	-	-	-	51-TR1-33-225140	6.943	51-TR1-21-225140	10.867
225-160	171.5	306	40	228	35	235	167.0	51-TR1-33-225160	6.949	51-TR1-21-225160	10.877
225-180	171.5	306	40	228	35	235	188.0	51-TR1-33-225180	6.955	51-TR1-21-225180	10.886
△ 225-200	171.5	306	-	-	-	-	-	51-TR1-33-225200	6.962	51-TR1-21-225200	10.896
△ 250-110	188	325	45	236	30	260	114.0	51-TR1-33-250110	7.734	51-TR1-21-250110	11.953
△ 250-125	188	325	-	-	-	-	-	51-TR1-33-250125	7.739	51-TR1-21-250125	11.960
△ 250-140	188	325	45	236	35	260	146.0	51-TR1-33-250140	7.743	51-TR1-21-250140	11.967
250-160	188	325	45	236	35	260	167.0	51-TR1-33-250160	7.749	51-TR1-21-250160	11.977
△ 250-180	188	325	-	-	-	-	-	51-TR1-33-250180	7.755	51-TR1-21-250180	11.986
250-200	188	325	45	236	35	260	208.0	51-TR1-33-250200	7.762	51-TR1-21-250200	11.996
250-225	188	325	45	236	40	260	236.0	51-TR1-33-250225	7.769	51-TR1-21-250225	11.910.8
* 280-140	210	400	-	-	-	-	-	51-TR1-33-280140	8.643	51-TR1-21-280140	13.467
* 280-160	220	420	-	-	-	-	-	51-TR1-33-280160	8.649	51-TR1-21-280160	13.477
* 280-180	220	440	-	-	-	-	-	51-TR1-33-280180	8.655	51-TR1-21-280180	13.486
* 280-200	235	460	-	-	-	-	-	51-TR1-33-280200	8.662	51-TR1-21-280200	13.496
* 280-225	245	485	-	-	-	-	-	51-TR1-33-280225	8.669	51-TR1-21-280225	13.410.8
* 280-250	260	510	-	-	-	-	-	51-TR1-33-280250	8.677	51-TR1-21-280250	13.411.9
* 315-160	237.5	450	-	-	-	-	-	51-TR1-33-315160	9.749	51-TR1-21-315160	15.077
* 315-180	237.5	470	-	-	-	-	-	51-TR1-33-315180	9.755	51-TR1-21-315180	15.086
* 315-200	252.5	490	-	-	-	-	-	51-TR1-33-315200	9.762	51-TR1-21-315200	15.096
* 315-225	262.5	510	-	-	-	-	-	51-TR1-33-315225	9.769	51-TR1-21-315225	15.010.8
* 315-250	277.5	540	-	-	-	-	-	51-TR1-33-315250	9.777	51-TR1-21-315250	15.011.9
* 315-280	287.5	570	-	-	-	-	-	51-TR1-33-315280	9.786	51-TR1-21-315280	15.013.4

△ 轉接品(Transition) \* 手工製品(Fabricated)



# PVDF/PVDF(FRP COATED) PIPE FITTING VALVE

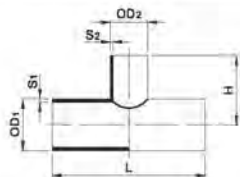


# PVDF/PVDF(FRP COATED) PIPE FITTING VALVE

## REDUCER TEE

(Fabricated)  
molded from PVDF  
for butt welding

手工對接異徑三通  
DFP TR3



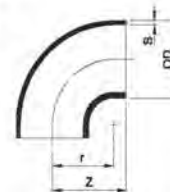
OD1/OD2 (mm)	H (mm)	L (mm)	SDR33 ISO S16 PN10	
			Code	S (mm)
355-180	257.5	500	51-TR3-33-355180	10.8/5.5
355-200	272.5	520	51-TR3-33-355200	10.8/5.2
355-225	282.5	545	51-TR3-33-355225	10.8/6.9
355-250	297.5	570	51-TR3-33-355250	10.8/7.7
355-280	307.5	600	51-TR3-33-355280	10.8/8.6
365-315	322.5	635	51-TR3-33-355315	10.8/9.7
400-200	285	560	51-TR3-33-400200	12.3/6.2
400-225	305	585	51-TR3-33-400225	12.3/6.9
400-250	320	610	51-TR3-33-400250	12.3/7.7
400-280	330	640	51-TR3-33-400280	12.3/8.6
400-315	345	675	51-TR3-33-400315	12.3/9.7
400-355	360	715	51-TR3-33-400355	12.3/10.9
450-225	330	625	51-TR3-33-450225	13.7/6.9
450-250	345	650	51-TR3-33-450250	13.7/7.7
450-280	355	680	51-TR3-33-450280	13.7/8.6
450-315	370	715	51-TR3-33-450315	13.7/9.7
450-355	385	755	51-TR3-33-450355	13.7/10.9
450-400	405	800	51-TR3-33-450400	13.7/12.3
500-250	370	690	51-TR3-33-500250	15.2/7.7
500-280	380	720	51-TR3-33-500280	15.2/8.6
500-315	395	755	51-TR3-33-500315	15.2/9.7
500-355	410	795	51-TR3-33-500355	15.2/10.9
500-400	430	840	51-TR3-33-500400	15.2/12.3
500-450	450	890	51-TR3-33-500450	15.2/13.7
560-280	410	780	51-TR3-33-560280	17.0/8.6
560-315	425	795	51-TR3-33-560315	17.0/9.7
560-355	440	835	51-TR3-33-560355	17.0/10.9
560-400	460	880	51-TR3-33-560400	17.0/12.3
560-450	480	930	51-TR3-33-560450	17.0/13.7
560-500	500	980	51-TR3-33-560500	17.0/15.2
630-315	460	815	51-TR3-33-630315	19.1/8.6
630-355	475	855	51-TR3-33-630355	19.1/10.9
630-400	495	900	51-TR3-33-630400	19.1/12.3
630-450	515	950	51-TR3-33-630450	19.1/13.7
630-500	535	1000	51-TR3-33-630500	19.1/15.2
630-560	555	1060	51-TR3-33-630560	19.1/17.0

手工製品 (Fabricated)

## PVDF BEND 90°

for butt welding  
molded from PVDF

對接90°彎  
DFP L90



OD (mm)	Z (mm)	r (mm)	SDR33 ISO S16 PN10		SDR21 ISO S10 PN16	
			Code	S (mm)	Code	S (mm)
20	32	27.5	-	-	51-L90-21-0020	1.9
25	38	34.0	-	-	51-L90-21-0025	1.9
32	43	38.5	-	-	51-L90-21-0032	2.4
40	46	43.0	-	-	51-L90-21-0040	2.4
50	58	52.0	-	-	51-L90-21-0050	3.0
63	70	65.0	51-L90-33-0063	2.0	51-L90-21-0063	3.0
75	85	78.5	51-L90-33-0075	2.3	51-L90-21-0075	3.6
90	100	92.5	51-L90-33-0090	2.8	51-L90-21-0090	4.3
110	124	115.0	51-L90-33-0110	3.4	51-L90-21-0110	5.3





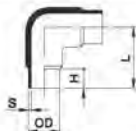
# PVDF/PVDF(FRP COATED) PIPE FITTING VALVE



# PVDF/PVDF(FRP COATED) PIPE FITTING VALVE

## PVDF BEND 90°

for butt welding  
Tekwelding  
molded from PVDF  
對接90°彎頭  
DFP L91

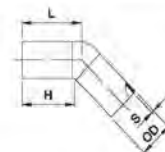


OD (mm)	H (mm)	L (mm)	SDR33 ISO S16 PN10		SDR21 ISO S10 PN16	
			Code	S (mm)	Code	S (mm)
20	25	45.0	-	-	51-L91-21-0020	1.9
25	26	51.0	-	-	51-L91-21-0025	1.9
32	26	58.0	-	-	51-L91-21-0032	2.4
40	28	68.0	-	-	51-L91-21-0040	2.4
50	28	78.0	-	-	51-L91-21-0050	3.0
63	28	91.0	51-L91-33-0063	2.0	51-L91-21-0063	3.0
75	28	103.0	51-L91-33-0075	2.3	51-L91-21-0075	3.6
90	28	118.0	51-L91-33-0090	2.6	51-L91-21-0090	4.3
110	28	138.0	51-L91-33-0110	3.4	51-L91-21-0110	5.3
125	35	97.5	51-L91-33-0125	3.9	51-L91-21-0125	6.0
140	35	130.0	51-L91-33-0140	4.3	51-L91-21-0140	6.7
160	35	133.0	51-L91-33-0160	4.9	51-L91-21-0160	7.7
180	48	136.0	51-L91-33-0180	5.5	51-L91-21-0180	8.8
200	38	138.0	51-L91-33-0200	6.2	51-L91-21-0200	9.6
225	40	180.0	51-L91-33-0225	6.9	51-L91-21-0225	10.8
250	45	299.5	51-L91-33-0250	7.7	51-L91-21-0250	11.9
280	90	230.0	51-L91-33-0280	8.6	51-L91-21-0280	13.4
315	90	247.5	51-L91-33-0315	9.7	51-L91-21-0315	15.0

## PVDF 45° ELBOW

for butt welding  
molded from PVDF

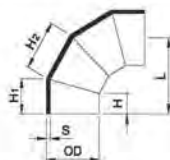
對接45°彎頭  
DFP L45



OD (mm)	H (mm)	L (mm)	SDR33 ISO S16 PN10		SDR21 ISO S10 PN16	
			Code	S (mm)	Code	S (mm)
20	28	32.0	-	-	51-L45-21-0020	1.9
25	29	34.0	-	-	51-L45-21-0025	1.9
32	30	36.0	-	-	51-L45-21-0032	2.4
40	31	39.0	-	-	51-L45-21-0040	2.4
50	32	42.0	-	-	51-L45-21-0050	3.0
63	34	47.0	51-L45-33-0063	2.0	51-L45-21-0063	3.0
75	34	49.0	51-L45-33-0075	2.3	51-L45-21-0075	3.6
90	36	55.0	51-L45-33-0090	2.8	51-L45-21-0090	4.3
110	45	68.0	51-L45-33-0110	3.4	51-L45-21-0110	5.3
125	50	81.0	51-L45-33-0125	3.9	51-L45-21-0125	6.0
140	55	91.5	51-L45-33-0140	4.3	51-L45-21-0140	6.7
160	60	94.0	51-L45-33-0160	4.9	51-L45-21-0160	7.7
180	65	110.0	51-L45-33-0180	5.5	51-L45-21-0180	8.8
200	70	120.0	51-L45-33-0200	6.2	51-L45-21-0200	9.6
225	80	127.0	51-L45-33-0225	6.9	51-L45-21-0225	10.8
250	90	150.0	51-L45-33-0250	7.7	51-L45-21-0250	11.9
280	100	170.0	51-L45-33-0280	8.6	51-L45-21-0280	13.4
315	110	184.0	51-L45-33-0315	9.7	51-L45-21-0315	15.0

## PVDF ELBOW 90°

molded from PVDF  
(Fabricated)  
for butt welding  
手工對接90°彎頭  
DFP L94



OD (mm)	H (mm)	H1 (mm)	H2 (mm)	L (mm)	SDR33 ISO S16 PN10		SDR21 ISO S10 PN16	
					Code	S (mm)	Code	S (mm)
355	160	255	350	556	51-L94-33-0315	10.9	-	-
400	180	287	384	628	51-L94-33-0400	12.3	-	-
450	200	321	441	698	51-L94-33-0450	13.7	-	-
500	220	354	488	771	51-L94-33-0500	15.2	-	-
560	240	390	536	848	51-L94-33-0560	17.0	-	-
630	250	419	588	907	51-L94-33-0630	19.1	-	-

手工製品(Fabricated)

## PVDF 45° ELBOW

(Fabricated)  
for butt welding  
molded from PVDF  
手工對接45°彎頭  
DFP L47



OD (mm)	H (mm)	H1 (mm)	H2 (mm)	L (mm)	SDR33 ISO S16 PN10		SDR21 ISO S10 PN16	
					Code	S (mm)	Code	S (mm)
355	180	230	302	320	51-L47-33-0355	10.9	-	-
400	180	259	340	360	51-L47-33-0400	12.3	-	-
450	200	289	398	401	51-L47-33-0450	13.7	-	-
500	220	320	410	443	51-L47-33-0500	15.2	-	-
560	240	352	452	485	51-L47-33-0560	17.0	-	-
630	250	375	488	516	51-L47-33-0630	19.1	-	-

手工製品(Fabricated)





# PVDF/PVDF(FRP COATED) PIPE FITTING VALVE

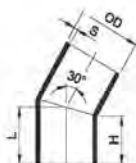


# PVDF/PVDF(FRP COATED) PIPE FITTING VALVE

## PVDF 30° ELBOW

(Fabricated)  
molded from PVDF  
for butt welding

手工對接30°彎頭  
DFP L30



OD (mm)	H (mm)	L (mm)	SDR33 ISO S16 PN10		SDR21 ISO S10 PN16	
			Code	S (mm)	Code	S (mm)
63	50	58	51-L30-33-0063	2.0	51-L30-21-0063	3.0
90	50	62	51-L30-33-0090	2.8	51-L30-21-0090	4.3
110	60	75	51-L30-33-0110	3.4	51-L30-21-0110	5.3
125	70	86	51-L30-33-0125	3.9	51-L30-21-0125	6.0
140	70	89	51-L30-33-0140	4.3	51-L30-21-0140	6.7
160	80	101	51-L30-33-0160	4.9	51-L30-21-0160	7.7
180	80	105	51-L30-33-0180	5.5	51-L30-21-0180	8.6
200	95	121	51-L30-33-0200	6.2	51-L30-21-0200	9.6
225	105	135	51-L30-33-0225	6.9	51-L30-21-0225	10.8
250	120	153	51-L30-33-0250	7.7	51-L30-21-0250	11.9
280	130	167	51-L30-33-0280	8.6	51-L30-21-0280	13.4
315	145	187	51-L30-33-0315	9.7	51-L30-21-0315	15.0
355	160	207	51-L30-33-0355	10.9	-	-
400	180	234	51-L30-33-0400	12.3	-	-
450	200	260	51-L30-33-0450	13.7	-	-
500	220	287	51-L30-33-0500	15.2	-	-
580	240	315	51-L30-33-0580	17.0	-	-
630	250	335	51-L30-33-0630	19.1	-	-

手工製品(Fabricated)

## PVDF 15° ELBOW

(Fabricated)  
molded from PVDF  
for butt welding

手工對接15°彎頭  
DFP L15



OD (mm)	H (mm)	L (mm)	SDR33 ISO S16 PN10		SDR21 ISO S10 PN16	
			Code	S (mm)	Code	S (mm)
63	50	54	51-L15-33-0063	2.0	51-L15-21-0063	3.0
90	50	55	51-L15-33-0090	2.8	51-L15-21-0090	4.3
110	60	67	51-L15-33-0110	3.4	51-L15-21-0110	5.3
125	70	78	51-L15-33-0125	3.9	51-L15-21-0125	6.0
140	70	79	51-L15-33-0140	4.3	51-L15-21-0140	6.7
160	80	90	51-L15-33-0160	4.9	51-L15-21-0160	7.7
180	80	92	51-L15-33-0180	5.5	51-L15-21-0180	8.6
200	95	106	51-L15-33-0200	6.2	51-L15-21-0200	9.6
225	105	120	51-L15-33-0225	6.9	51-L15-21-0225	10.8
250	120	137	51-L15-33-0250	7.7	51-L15-21-0250	11.9
280	130	149	51-L15-33-0280	8.6	51-L15-21-0280	13.4
315	145	166	51-L15-33-0315	9.7	51-L15-21-0315	15.0
355	160	183	51-L15-33-0355	10.9	-	-
400	180	207	51-L15-33-0400	12.3	-	-
450	200	229	51-L15-33-0450	13.7	-	-
500	220	253	51-L15-33-0500	15.2	-	-
560	240	277	51-L15-33-0560	17.0	-	-
630	250	291	51-L15-33-0630	19.1	-	-





# PVDF/PVDF(FRP COATED) PIPE FITTING VALVE

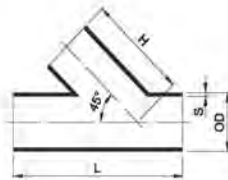


# PVDF/PVDF(FRP COATED) PIPE FITTING VALVE

## PVDF 45°Y-TEE

(Fabricated)  
for butt welding  
molded from PVDF

手工對接 45°Y型三通  
DFP TY3

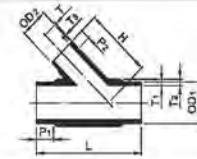


OD (mm)	H (mm)	L (mm)	SDR33 ISO S16 PN10		SDR21 ISO S10 PN16	
			Code	S (mm)	Code	S (mm)
83	126	225	51-TY3-33-0063	2.0	51-TY3-21-0063	3.0
90	159	261	51-TY3-33-0090	2.8	51-TY3-21-0090	4.3
110	193	318	51-TY3-33-0110	3.4	51-TY3-21-0110	5.3
125	221	366	51-TY3-33-0125	3.9	51-TY3-21-0125	6.0
140	239	387	51-TY3-33-0140	4.3	51-TY3-21-0140	6.7
160	273	443	51-TY3-33-0160	4.9	51-TY3-21-0160	7.7
180	297	471	51-TY3-33-0180	5.5	51-TY3-21-0180	8.6
200	336	541	51-TY3-33-0200	6.2	51-TY3-21-0200	9.6
225	377	603	51-TY3-33-0225	6.9	51-TY3-21-0225	10.8
250	422	679	51-TY3-33-0250	7.7	51-TY3-21-0250	11.9
280	468	748	51-TY3-33-0280	8.6	51-TY3-21-0280	13.4
315	525	838	51-TY3-33-0315	9.7	51-TY3-21-0315	15.0
355	589	935	51-TY3-33-0355	10.9	-	-
400	663	1053	51-TY3-33-0400	12.3	-	-
450	743	1178	51-TY3-33-0450	13.7	-	-
500	824	1303	51-TY3-33-0500	15.2	-	-
560	916	1441	51-TY3-33-0560	17.0	-	-
630	1011	1567	51-TY3-33-0630	19.1	-	-

## PVDF 45°Y-TEE

for butt welding  
molded from PVDF

對接異徑 45°Y型三通  
DFP TY1



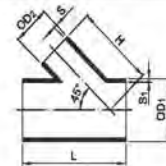
OD1 (mm)	OD2 (mm)	L (mm)	P1 (mm)	P2 (mm)	H (mm)	SDR33 ISO S16 PN10				Weight (Kg/Pc.)	Code
						T1 (mm)	T2 (mm)	T3 (mm)	T4 (mm)		
90	63	242	53	31	153.53	5.1	11.1	3.6	7.8	0.593	51-TY1-33-090063
110	63	273	65	31	172.50	8.3	13.1	3.6	7.8	0.907	51-TY1-33-110063
160	110	374	84	65	265.05	9.1	15.8	6.3	13.0	2.520	51-TY1-33-160110

OD1 (mm)	OD2 (mm)	L (mm)	P1 (mm)	P2 (mm)	H (mm)	SDR21 ISO S10 PN16				Weight (Kg/Pc.)	Code
						T1 (mm)	T2 (mm)	T3 (mm)	T4 (mm)		
90	63	242	53	31	153.53	8.2	14.2	6.0	10.0	0.766	51-TY1-21-090063
110	63	273	65	31	172.50	10.0	16.8	6.0	10.0	1.200	51-TY1-21-110063
110	90	316.25	65	53	207.35	10.0	16.8	8.5	14.2	1.656	51-TY1-21-110090
160	90	356.50	84	53	248.04	14.6	21.3	8.3	14.2	2.588	51-TY1-21-160090
160	110	374	84	65	265.05	14.6	21.3	10.4	16.7	2.522	51-TY1-21-160110

## PVDF REDUCED 45°Y-TEE

(fabricated)  
for butt welding  
molded from PVDF

手工對接異徑 45°Y型三通  
DFP TY6



OD1/OD2 (mm)	H (mm)	L (mm)	B (mm)	B1 (mm)	SDR33 S16 PN10		SDR21 S10 PN16	
					Code	S1/S2 (mm)	Code	S1/S2 (mm)
110-32	154	208	60	88	-	-	51-TY6-21-110032	5.3/2.4
110-40	158	219	60	99	-	-	51-TY6-21-110040	5.3/2.4
110-50	163	233	60	113	-	-	51-TY6-21-110050	5.3/3.0
110-75	175	269	60	148	51-TY6-33-110075	3.4/2.3	51-TY6-21-110075	5.3/3.6
125-40	178	246	70	106	-	-	51-TY6-21-125040	6.0/2.4
125-50	183	260	70	120	-	-	51-TY6-21-125050	6.0/3.0
125-63	200	279	70	139	51-TY6-33-125063	3.9/2.0	51-TY6-21-125063	6.0/3.0
125-75	196	296	70	156	51-TY6-33-125075	3.9/2.3	51-TY6-21-125075	6.0/3.6
125-90	199	317	70	177	51-TY6-33-125090	3.9/2.8	51-TY6-21-125090	6.0/4.3
125-110	213	345	70	205	51-TY6-33-125110	3.9/3.4	51-TY6-21-125110	6.0/5.3
140-50	194	260	70	120	-	-	51-TY6-21-140050	6.7/3.0
140-63	200	279	70	139	51-TY6-33-140063	4.3/2.0	51-TY6-21-140063	6.7/3.0
140-75	206	296	70	156	51-TY6-33-140075	4.3/2.3	51-TY6-21-140075	6.7/3.6
140-90	214	317	70	177	51-TY6-33-140090	4.3/2.8	51-TY6-21-140090	6.7/4.3
140-110	224	345	70	205	51-TY6-33-140110	4.3/3.4	51-TY6-21-140110	6.7/5.3
140-125	231	366	70	226	51-TY6-33-140125	4.3/3.9	51-TY6-21-140125	6.7/6.0





# PVDF/PVDF(FRP COATED) PIPE FITTING VALVE

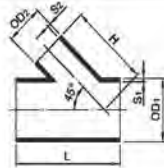


# PVDF/PVDF(FRP COATED) PIPE FITTING VALVE

## PVDF REDUCED 45° Y-TEE

(fabricated)  
for butt welding  
molded from PVDF

手工对接異徑45° Y型三通  
DFP TY6



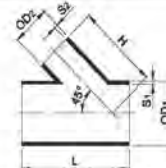
OD1/OD2 (mm)	H (mm)	L (mm)	SDR33 ISO 516 PN10		SDR21 ISO 516 PN16	
			Code	S1/S2 (mm)	Code	S1/S2 (mm)
160-63	225	306	51-TY6-33-160063	4.9/2.0	51-TY6-21-160063	7.7/3.0
160-75	231	323	51-TY6-33-160075	4.9/2.3	51-TY6-21-160075	7.7/3.6
160-125	268	393	51-TY6-33-160125	4.9/3.9	51-TY6-21-160125	7.7/6.0
160-140	263	415	51-TY6-33-160140	4.9/4.3	51-TY6-21-160140	7.7/6.7
180-75	245	323	51-TY6-33-180075	5.5/2.3	51-TY6-21-180075	8.6/3.6
180-90	252	344	51-TY6-33-180090	5.5/2.8	51-TY6-21-180090	8.6/4.3
180-110	280	372	51-TY6-33-180110	5.5/3.4	51-TY6-21-180110	8.6/5.3
180-125	270	393	51-TY6-33-180125	5.5/3.9	51-TY6-21-180125	8.6/6.0
180-140	277	415	51-TY6-33-180140	5.5/4.3	51-TY6-21-180140	8.6/6.7
180-160	287	443	51-TY6-33-180160	5.5/4.9	51-TY6-21-180160	8.6/7.7
200-90	281	384	51-TY6-33-200090	6.2/2.8	51-TY6-21-200090	9.6/4.3
200-110	281	413	51-TY6-33-200110	6.2/3.4	51-TY6-21-200110	9.6/5.3
200-125	323	434	51-TY6-33-200125	6.2/3.9	51-TY6-21-200125	9.6/6.0
200-140	308	455	51-TY6-33-200140	6.2/4.3	51-TY6-21-200140	9.6/6.7
200-160	316	483	51-TY6-33-200160	6.2/4.9	51-TY6-21-200160	9.6/7.7
200-180	326	512	51-TY6-33-200180	6.2/5.5	51-TY6-21-200180	9.6/8.6
225-110	319	440	51-TY6-33-225110	6.9/3.4	51-TY6-21-225110	10.8/5.3
225-125	327	461	51-TY6-33-225125	6.9/3.9	51-TY6-21-225125	10.8/6.0
225-140	334	483	51-TY6-33-225140	6.9/4.3	51-TY6-21-225140	10.8/6.7
225-160	344	511	51-TY6-33-225160	6.9/4.9	51-TY6-21-225160	10.8/7.7
225-180	354	539	51-TY6-33-225180	6.9/5.5	51-TY6-21-225180	10.8/8.6
225-200	364	567	51-TY6-33-225200	6.9/6.2	51-TY6-21-225200	10.8/9.6
250-125	356	502	51-TY6-33-250125	7.7/3.9	51-TY6-21-250125	11.9/6.0
250-140	367	523	51-TY6-33-250140	7.7/4.3	51-TY6-21-250140	11.9/6.7
250-160	377	551	51-TY6-33-250160	7.7/4.9	51-TY6-21-250160	11.9/7.7
250-180	387	579	51-TY6-33-250180	7.7/5.5	51-TY6-21-250180	11.9/8.6
250-200	397	608	51-TY6-33-250200	7.7/6.2	51-TY6-21-250200	11.9/9.6
250-225	409	643	51-TY6-33-250225	7.7/6.9	51-TY6-21-250225	11.9/10.8
280-140	398	550	51-TY6-33-280140	8.6/4.3	51-TY6-21-280140	13.4/6.7
280-160	408	578	51-TY6-33-280160	8.6/4.9	51-TY6-21-280160	13.4/7.7
280-180	419	606	51-TY6-33-280180	8.6/5.5	51-TY6-21-280180	13.4/8.6
280-200	428	635	51-TY6-33-280200	8.6/6.2	51-TY6-21-280200	13.4/9.6
280-225	440	670	51-TY6-33-280225	8.6/6.9	51-TY6-21-280225	13.4/10.8
280-250	453	705	51-TY6-33-280250	8.6/7.7	51-TY6-21-280250	13.4/11.9

\*手工制品(Fabricated)

## PVDF REDUCED 45° Y-TEE

(fabricated)  
for butt welding  
molded from PVDF

手工对接異徑45° Y型三通  
DFP TY6



OD1/OD2 (mm)	H (mm)	L (mm)	SDR33 ISO 516 PN10		SDR21 ISO 516 PN16	
			Code	S1/S2 (mm)	Code	S1/S2 (mm)
315-160	448	619	51-TY6-33-315160	9.7/4.9	51-TY6-21-315160	15.0/7.7
315-180	458	647	51-TY6-33-315180	9.7/5.5	51-TY6-21-315180	15.0/8.6
315-200	466	678	51-TY6-33-315200	9.7/6.2	51-TY6-21-315200	15.0/9.6
315-225	480	711	51-TY6-33-315225	9.7/6.9	51-TY6-21-315225	15.0/10.8
315-250	493	746	51-TY6-33-315250	9.7/7.7	51-TY6-21-315250	15.0/11.9
315-280	508	789	51-TY6-33-315280	9.7/8.6	51-TY6-21-315280	15.0/13.4
355-180	501	688	51-TY6-33-355180	10.9/5.5	-	-
355-200	511	716	51-TY6-33-355200	10.9/6.2	-	-
355-225	521	751	51-TY6-33-355225	10.9/6.9	-	-
355-250	536	787	51-TY6-33-355250	10.9/7.7	-	-
355-280	551	826	51-TY6-33-355280	10.9/8.6	-	-
355-315	558	879	51-TY6-33-355315	10.9/9.6	-	-
400-200	563	770	51-TY6-33-400200	12.3/6.2	-	-
400-225	575	805	51-TY6-33-400225	12.3/6.9	-	-
400-250	581	841	51-TY6-33-400250	12.3/7.7	-	-
400-280	603	883	51-TY6-33-400280	12.3/8.6	-	-
400-315	620	933	51-TY6-33-400315	12.3/9.7	-	-
400-355	640	985	51-TY6-33-400355	12.3/10.9	-	-
450-225	631	860	51-TY6-33-450225	13.7/6.9	-	-
450-250	643	895	51-TY6-33-450250	13.7/7.7	-	-
450-280	658	937	51-TY6-33-450280	13.7/8.6	-	-
450-315	676	987	51-TY6-33-450315	13.7/9.7	-	-
450-355	698	1043	51-TY6-33-450355	13.7/10.9	-	-
450-400	718	1107	51-TY6-33-450400	13.7/12.3	-	-
500-250	699	949	51-TY6-33-500250	15.2/7.7	-	-
500-280	714	992	51-TY6-33-500280	15.2/8.6	-	-
500-315	735	1041	51-TY6-33-500315	15.2/9.7	-	-
500-355	751	1098	51-TY6-33-500355	15.2/10.9	-	-
500-400	774	1157	51-TY6-33-500400	15.2/12.3	-	-
500-450	799	1232	51-TY6-33-500450	15.2/13.7	-	-
560-280	776	1046	51-TY6-33-560280	17.0/8.6	-	-
560-315	793	1095	51-TY6-33-560315	17.0/9.7	-	-
560-355	821	1152	51-TY6-33-560355	17.0/10.9	-	-
560-400	836	1216	51-TY6-33-560400	17.0/12.3	-	-
560-450	861	1287	51-TY6-33-560450	17.0/13.7	-	-
560-500	886	1357	51-TY6-33-560500	17.0/15.2	-	-
630-315	853	1122	51-TY6-33-630315	19.1/8.7	-	-
630-355	873	1179	51-TY6-33-630355	19.1/10.9	-	-
630-400	895	1242	51-TY6-33-630400	19.1/12.3	-	-
630-450	920	1313	51-TY6-33-630450	19.1/13.7	-	-
630-500	945	1384	51-TY6-33-630500	19.1/15.2	-	-
630-560	975	1469	51-TY6-33-630560	19.1/17.0	-	-





# PVDF/PVDF(FRP COATED) PIPE FITTING VALVE

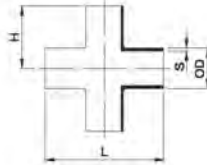


# PVDF/PVDF(FRP COATED) PIPE FITTING VALVE

## PVDF CROSS

(Fabricated)  
for butt welding  
molded from PVDF

手工對接四通  
DFP TZ1

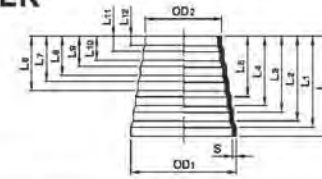


OD (mm)	H (mm)	L (mm)	SDR33 ISO S16 PN10		SDR21 ISO S10 PN16	
			Code	S (mm)	Code	S (mm)
63	81.5	163	51-TZ1-33-0063	2.0	51-TZ1-21-0063	3.0
90	95.0	190	51-TZ1-33-0090	2.8	51-TZ1-21-0090	4.3
110	115.0	230	51-TZ1-33-0110	3.4	51-TZ1-21-0110	5.3
125	132.5	265	51-TZ1-33-0125	3.9	51-TZ1-21-0125	6.0
140	140.0	280	51-TZ1-33-0140	4.3	51-TZ1-21-0140	6.7
160	160.0	320	51-TZ1-33-0160	4.9	51-TZ1-21-0160	7.7
180	170.0	340	51-TZ1-33-0180	5.5	51-TZ1-21-0180	8.6
200	195.0	390	51-TZ1-33-0200	6.2	51-TZ1-21-0200	9.6
225	217.5	435	51-TZ1-33-0225	6.9	51-TZ1-21-0225	10.8
250	245.0	490	51-TZ1-33-0250	7.7	51-TZ1-21-0250	11.9
280	270.0	540	51-TZ1-33-0280	8.6	51-TZ1-21-0280	13.4
315	302.5	605	51-TZ1-33-0315	9.7	51-TZ1-21-0315	15.0
355	337.5	675	51-TZ1-33-0355	10.9	-	-
400	380.0	760	51-TZ1-33-0400	12.3	-	-
450	425.0	850	51-TZ1-33-0450	13.7	-	-
500	470.0	940	51-TZ1-33-0500	15.2	-	-
560	520.0	1040	51-TZ1-33-0560	17.0	-	-
630	585.0	1130	51-TZ1-33-0630	19.1	-	-

## PVDF REDUCER

CONCENTRIC  
Butt welding  
molded from PVDF

對接塔型大小頭  
DFP TW1



OD1/OD2 (mm)	L1 (mm)	L2 (mm)	L3 (mm)	L4 (mm)	L5 (mm)	L6 (mm)	L7 (mm)	L8 (mm)	L9 (mm)	L10 (mm)	L11 (mm)	L12 (mm)
63/16	70.5	62.5	53.5	46.5	38.5	33.0	25.0	21	15	12	7	5
75/32	62.5	54.5	45.5	37.5	28.5	21.5	13.5	8	-	-	-	-
110/63	57.0	47.0	36.0	28.0	17.0	9.0	-	-	-	-	-	-
125/75	63.0	53.0	40.0	30.0	19.0	11.0	-	-	-	-	-	-
160/110	74.0	62.0	48.0	37.0	23.0	13.0	-	-	-	-	-	-
225/160	87.0	71.0	55.0	42.0	26.0	14.0	-	-	-	-	-	-
315/225	109.0	88.0	70.0	54.0	35.0	19.0	-	-	-	-	-	-
450/315	148.0	118.0	92.0	68.0	44.0	24.0	-	-	-	-	-	-
630/450	214.0	178.0	132.0	100.0	62.0	32.0	-	-	-	-	-	-

PN10	16	20	25	32	40	50	63	75	90	110	125	140	160	180	200	225	250	280	315	355	400	450	500	560	630
S1	-	-	-	-	-	-	2.0	2.3	2.8	3.4	3.9	4.3	4.9	5.5	6.2	6.9	7.7	8.6	9.7	10.9	12.3	13.7	15.2	17.0	19.1
PN16	16	20	25	32	40	50	63	75	90	110	125	140	160	180	200	225	250	280	315	355	400	450	500	560	630
S1	1.9	1.9	1.9	2.4	2.4	3.0	3.0	3.6	4.3	5.3	6.0	6.7	7.7	8.6	9.6	10.8	11.9	13.4	15.0	16.9	19.0	21.4	23.8	26.7	30.0

OD1/OD2 (mm)	L (mm)	SDR33 ISO S16 PN10	SDR21 ISO S10 PN16
		Code	Code
63/16	79.5±2	51-TW1-33-063016	51-TW1-21-063016
75/32	73.5±2	51-TW1-33-075032	51-TW1-21-075032
110/63	70.0±2	51-TW1-33-110063	51-TW1-21-110063
125/75	77.0±2	51-TW1-33-125075	51-TW1-21-125075
160/110	88.0±2	51-TW1-33-160110	51-TW1-21-160110
225/160	106.0±3	51-TW1-33-225160	51-TW1-21-225160
315/225	133.0±3	51-TW1-33-315225	51-TW1-21-315225
450/315	180.0±4	51-TW1-33-450315	51-TW1-21-450315
630/450	276.0±4	51-TW1-33-630450	51-TW1-21-630450





# PVDF/PVDF(FRP COATED) PIPE FITTING VALVE

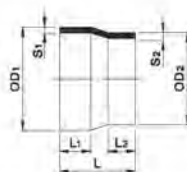


# PVDF/PVDF(FRP COATED) PIPE FITTING VALVE

## PVDF REDUCER

concentric, elongated  
for butt welding  
molded from PVDF

對接大小頭  
DFP RC1



## PVDF REDUCER

(Fabricated)  
for butt welding  
molded from PVDF

手工對接大小頭  
DFP RC1



OD1/OD2 (mm)	L (mm)	L <sub>1</sub> (mm)	L <sub>2</sub> (mm)	SDR33 ISO 516 PN10		SDR21 ISO 510 PN16	
				Code	S1/S2 (mm)	Code	S1/S2 (mm)
25-20	50	20	20	-	-	51-RC1-21-025020	1.9/1.9
32-20	50	20	20	-	-	51-RC1-21-032020	2.4/1.9
32-25	50	20	20	-	-	51-RC1-21-032025	2.4/1.9
40-20	55	20	20	-	-	51-RC1-21-040020	2.4/1.9
40-25	55	20	20	-	-	51-RC1-21-040025	2.4/1.9
40-32	55	20	20	-	-	51-RC1-21-040032	2.4/2.4
50-20	60	24	20	-	-	51-RC1-21-050020	3.0/1.9
50-25	60	24	20	-	-	51-RC1-21-050025	3.0/1.9
50-32	60	24	20	-	-	51-RC1-21-050032	3.0/2.4
50-40	60	24	20	-	-	51-RC1-21-050040	3.0/2.4
63-25	65	25	20	-	-	51-RC1-21-063025	3.0/1.9
63-32	65	25	22	-	-	51-RC1-21-063032	3.0/2.4
63-40	65	25	22	-	-	51-RC1-21-063040	3.0/2.4
63-50	65	25	22	-	-	51-RC1-21-063050	3.0/3.0
75-40	68	25	24	-	-	51-RC1-21-075040	3.6/2.4
75-50	68	25	24	-	-	51-RC1-21-075050	3.6/3.0
75-63	68	25	24	51-RC1-33-075063	2.3/2.0	51-RC1-21-075063	3.6/3.0
90-50	75	30	26	-	-	51-RC1-21-090050	4.3/3.0
90-63	75	30	26	51-RC1-33-090063	2.8/2.0	51-RC1-21-090063	4.3/3.0
90-75	75	30	26	51-RC1-33-090075	2.8/2.3	51-RC1-21-090075	4.3/3.6
110-83	90	35	30	51-RC1-33-110083	3.4/2.0	51-RC1-21-110083	5.3/3.0
110-75	90	35	30	51-RC1-33-110075	3.4/2.3	51-RC1-21-110075	5.3/3.6
110-90	90	35	30	51-RC1-33-110090	3.4/2.8	51-RC1-21-110090	5.3/4.3
125-110	100	40	35	51-RC1-33-125110	3.9/3.4	51-RC1-21-125110	6.0/5.3
140-125	110	45	40	51-RC1-33-140125	4.3/3.9	51-RC1-21-140125	6.7/6.0
160-110	130	60	40	51-RC1-33-160110	4.9/3.4	51-RC1-21-160110	7.7/5.3
160-140	130	60	40	51-RC1-33-160140	4.9/4.3	51-RC1-21-160140	7.7/6.7
180-160	130	60	40	51-RC1-33-180160	5.5/4.9	51-RC1-21-180160	8.6/7.7
200-160	140	60	40	51-RC1-33-200160	6.2/4.9	51-RC1-21-200160	9.6/7.7
225-190	150	80	40	51-RC1-33-225190	6.9/4.9	51-RC1-21-225190	10.8/7.7
225-200	150	80	50	51-RC1-33-225200	6.9/6.2	51-RC1-21-225200	10.8/9.6
250-225	170	70	80	51-RC1-33-250225	7.7/6.9	51-RC1-21-250225	11.9/10.8
280-250	180	80	60	51-RC1-33-280250	8.6/7.7	51-RC1-21-280250	13.4/11.9
315-280	220	90	80	51-RC1-33-315280	9.7/8.6	51-RC1-21-315280	15.0/13.4

OD1/OD2 (mm)	L (mm)	L <sub>1</sub> (mm)	L <sub>2</sub> (mm)	SDR33 ISO 516 PN10	
				Code	S1/S2 (mm)
355-180	318	180	110	51-RC1-33-355180	10.9/6.5
355-200	328	180	120	51-RC1-33-355200	10.9/6.2
355-225	328	180	120	51-RC1-33-355225	10.8/6.9
355-250	338	180	130	51-RC1-33-355250	10.9/7.7
355-280	358	180	150	51-RC1-33-355280	10.9/8.6
355-315	368	180	160	51-RC1-33-355315	10.9/9.7
400-200	358	210	120	51-RC1-33-400200	12.3/6.2
400-225	358	210	120	51-RC1-33-400225	12.3/6.9
400-250	368	210	130	51-RC1-33-400250	12.3/7.7
400-280	368	210	150	51-RC1-33-400280	12.3/8.6
400-315	398	210	160	51-RC1-33-400315	12.3/9.7
400-355	418	210	180	51-RC1-33-400355	12.3/10.9
450-225	398	250	120	51-RC1-33-450225	13.7/6.9
450-250	408	250	130	51-RC1-33-450250	13.7/7.7
450-280	428	250	150	51-RC1-33-450280	13.7/8.6
450-315	438	250	160	51-RC1-33-450315	13.7/9.7
450-355	458	250	180	51-RC1-33-450355	13.7/10.9
450-400	488	250	210	51-RC1-33-450400	13.7/12.3
500-250	438	280	130	51-RC1-33-500250	15.2/7.7
500-280	458	280	150	51-RC1-33-500280	15.2/8.6
500-315	468	280	160	51-RC1-33-500315	15.2/9.7
500-355	488	280	180	51-RC1-33-500355	15.2/10.9
500-400	518	280	210	51-RC1-33-500400	15.2/12.3
500-450	558	280	250	51-RC1-33-500450	15.2/13.7
580-280	478	300	150	51-RC1-33-580280	17.0/8.6
580-315	488	300	160	51-RC1-33-580315	17.0/9.7
580-355	508	300	180	51-RC1-33-580355	17.0/10.9
580-400	538	300	210	51-RC1-33-580400	17.0/12.3
580-450	578	300	250	51-RC1-33-580450	17.0/13.7
580-500	608	300	280	51-RC1-33-580500	17.0/15.2
630-315	538	350	160	51-RC1-33-630315	19.1/9.7
630-355	558	350	180	51-RC1-33-630355	19.1/10.9
630-400	588	350	210	51-RC1-33-630400	19.1/12.3
630-450	628	350	250	51-RC1-33-630450	19.1/13.7
630-500	658	350	280	51-RC1-33-630500	19.1/15.2
630-560	678	350	300	51-RC1-33-630560	19.1/17.0





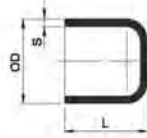
# PVDF/PVDF(FRP COATED) PIPE FITTING VALVE



# PVDF/PVDF(FRP COATED) PIPE FITTING VALVE

## PVDF END CAP

elongated,  
for butt welding  
molded from PVDF

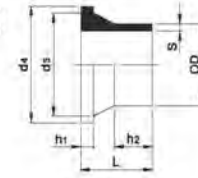


對接管帽  
DFP CP1

OD (mm)	L <sub>1</sub> (mm)	L (mm)	SDR33 ISO S16 PN10		SDR21 ISO S10 PN16	
			Code	S (mm)	Code	S (mm)
20	30.0	42.0	-	-	51-CP1-21-0020	1.9
25	35.0	50.0	-	-	51-CP1-21-0025	1.9
32	40.0	55.0	-	-	51-CP1-21-0032	2.4
40	40.0	60.0	-	-	51-CP1-21-0040	2.4
50	40.0	60.0	-	-	51-CP1-21-0050	3.0
63	50.0	70.0	51-CP1-33-0063	2.0	51-CP1-21-0063	3.0
75	55.0	80.0	51-CP1-33-0075	2.3	51-CP1-21-0075	3.6
90	60.0	90.0	51-CP1-33-0090	2.8	51-CP1-21-0090	4.3
110	65.0	100.0	51-CP1-33-0110	3.4	51-CP1-21-0110	5.3
125	70.0	110.0	51-CP1-33-0125	3.9	51-CP1-21-0125	6.0
140	106.0	144.0	51-CP1-33-0140	4.3	51-CP1-21-0140	6.7
160	118.5	142.0	51-CP1-33-0160	4.9	51-CP1-21-0160	7.7
180	141.0	191.0	51-CP1-33-0180	5.5	51-CP1-21-0180	8.6
200	127.0	181.0	51-CP1-33-0200	6.2	51-CP1-21-0200	9.6
225	141.5	210.0	51-CP1-33-0225	6.9	51-CP1-21-0225	10.8
250	152.0	230.0	51-CP1-33-0250	7.7	51-CP1-21-0250	11.9
280	162.0	257.0	51-CP1-33-0280	8.6	51-CP1-21-0280	13.4
315	180.0	262.0	51-CP1-33-0315	9.7	51-CP1-21-0315	15.0
355	75.0	130.0	51-CP1-33-0355	10.9	-	-
400	75.0	130.0	51-CP1-33-0400	12.3	-	-
450	75.0	130.0	51-CP1-33-0450	13.7	-	-
500	75.0	130.0	51-CP1-33-0500	15.2	-	-
560	75.0	130.0	51-CP1-33-0560	17.0	-	-
630	100.0	160.0	51-CP1-33-0630	19.1	-	-

## PVDF STUB FLANGE

for butt welding  
molded from PVDF



對接中間法蘭  
DFP FT1

ø20-ø315

OD (mm)	d <sub>2</sub> (mm)	d <sub>4</sub> (mm)	L (mm)	h <sub>2</sub> (mm)	SDR33 ISO S16 PN10			SDR21 ISO S10 PN16		
					Code	s (mm)	h (mm)	Code	s (mm)	h <sub>1</sub> (mm)
20	28	45	50	29	-	-	-	51-FT1-21-0020	1.9	7
25	34	58	50	29	-	-	-	51-FT1-21-0025	1.9	9
32	41	68	50	26	-	-	-	51-FT1-21-0032	2.4	10
40	51	78	50	23	-	-	-	51-FT1-21-0040	2.4	11
50	61	90.2	50	23	-	-	-	51-FT1-21-0050	3.0	12
63	73.6	102	50	19	51-FT1-33-0063	2.0	14	51-FT1-21-0063	3.0	14
75	87.5	122	50	19	51-FT1-33-0075	2.3	16	51-FT1-21-0075	3.6	16
90	104	136	80	41	51-FT1-33-0090	2.8	17	51-FT1-21-0090	4.3	17
110	128.5	158	80	38	51-FT1-33-0110	3.4	18	51-FT1-21-0110	5.3	18
125	135	158	175	102	51-FT1-33-0125	3.9	25.5	51-FT1-21-0125	6.0	25.5
140	155	191	197.1	129.7	51-FT1-33-0140	4.3	27.4	51-FT1-21-0140	6.7	27.4
160	175.8	211.8	160.5	110	51-FT1-33-0160	4.9	26.2	51-FT1-21-0160	7.7	26.2
180	186	217	180	127	51-FT1-33-0180	5.5	26.5	51-FT1-21-0180	8.6	26.5
200	229	268	213	144	51-FT1-33-0200	6.2	31.5	51-FT1-21-0200	9.6	31.5
225	237	266	213	144	51-FT1-33-0225	6.9	33	51-FT1-21-0225	10.8	33
250	284	320	273	205	51-FT1-33-0250	7.7	34	51-FT1-21-0250	11.9	34
280	292	320	375	303.5	51-FT1-33-0280	8.6	32	51-FT1-21-0280	13.4	32
315	334	371	379	303.5	51-FT1-33-0315	9.7	35	51-FT1-21-0315	15.0	35
355	373	430	175	-	51-FT1-33-0355	10.9	40	-	-	-
400	427	482	175	-	51-FT1-33-0400	12.3	40	-	-	-
450	514	585	180	-	51-FT1-33-0450	13.7	50	-	-	-
500	530	585	180	-	51-FT1-33-0500	15.2	50	-	-	-
560	615	685	180	-	51-FT1-33-0560	17.0	55	-	-	-
630	642	685	200	-	51-FT1-33-0630	19.1	55	-	-	-





# PVDF/PVDF(FRP COATED) PIPE FITTING VALVE

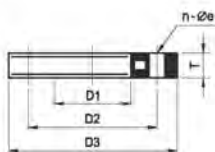


# PVDF/PVDF(FRP COATED) PIPE FITTING VALVE

## BACKING RING

With steel insert  
for steel beadings  
acc.to DIN PN10  
molded from PP grey PP black

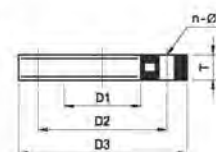
法蘭鐵片  
DFP FHD DIN



## BACKING RING

With steel insert  
acc.to ANSI standard  
PP grey

法蘭鐵片150#  
DFP FHA



OD (mm)	D1 (mm)	D2 (mm)	D3 (mm)	a (mm)	n Number	T (mm)	SDR11 ISO S5 PN16
							Code
20	28	65	95	14	4	12	31-FHD-11-0020
25	34	75	105	14	4	12	31-FHD-11-0025
32	42	85	115	14	4	16	31-FHD-11-0032
40	51	100	140	18	4	16	31-FHD-11-0040
50	62	110	150	18	4	18	31-FHD-11-0050
63	78	125	165	18	4	18	31-FHD-11-0063
75	92	145	185	18	4	18	31-FHD-11-0075
90	108	160	200	18	8	20	31-FHD-11-0090
110	128	180	220	18	8	20	31-FHD-11-0110
140	158	210	250	18	8	22	31-FHD-11-0140
160	178	240	285	23	8	22	31-FHD-11-0160
180	188	240	285	23	8	22	31-FHD-11-0180
200	235	295	340	23	8	24	31-FHD-11-0200
225	238	295	340	23	8	24	31-FHD-11-0225
250	288	350	390	23	12	26	31-FHD-11-0250
280	294	350	395	23	12	26	31-FHD-11-0280
315	338	400	445	23	12	26	31-FHD-11-0315
▲ 355	376	460	505	30	16	28	31-FHD-11-0355
▲ 400	430	515	565	30	16	28	31-FHD-11-0400
▲ 450	517	620	670	30	20	30	31-FHD-11-0450
▲ 500	533	620	670	30	20	30	31-FHD-11-0500
▲ 560	618	725	780	30	20	30	31-FHD-11-0560
▲ 630	645	725	780	30	20	30	31-FHD-11-0630

▲ 鋼鐵製品(Steel ones)

OD (inch)	D1 (mm)	D2		D3 (mm)	a (mm)	n Number	T (mm)	SDR35 ISO S16 PN10
		(mm)	(inch)					Code
1/2"	28	60.50	2-3/8"	89	16	4	12	31-FHA-11-0020
3/4"	34	69.85	2-3/4"	98	16	4	12	31-FHA-11-0025
1"	42	79.25	3-1/8"	108	16	4	16	31-FHA-11-0032
1-1/4"	51	88.90	3-1/2"	117	16	4	16	31-FHA-11-0040
1-1/2"	62	98.55	3-7/8"	127	16	4	18	31-FHA-11-0050
2"	78	120.65	4-3/4"	152	19	4	18	31-FHA-11-0063
2-1/2"	92	139.70	5-1/2"	178	19	4	18	31-FHA-11-0075
3"	111	152.40	6"	191	19	4	20	31-FHA-11-0090
4"	133	190.50	7-1/2"	229	19	8	20	31-FHA-11-0110
5"	133	190.50	7-1/2"	254	22	8	20	31-FHA-11-0125
6"	178	241.00	9-1/2"	279	22	8	24	31-FHA-11-0160
8"	236	298.45	11-3/4"	343	22	8	28	31-FHA-11-0200
10"	288	361.95	14-1/4"	406	25	12	30	31-FHA-11-0250
12"	338	431.60	17"	483	25	12	32	31-FHA-11-0315
▲ 14"	376	476.25	18-3/4"	533	29	12	28	31-FHA-11-0355
▲ 16"	430	539.75	21-1/4"	597	29	16	28	31-FHA-11-0400
▲ 18"	517	577.85	22-3/4"	635	32	16	30	31-FHA-11-0450
▲ 20"	533	635.00	25"	699	32	20	30	31-FHA-11-0500
▲ 24"	645	749.30	29-1/2"	813	35	20	30	31-FHA-11-0630

▲ 鋼鐵製品(Steel ones)

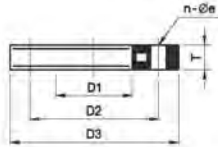




# PVDF/PVDF(FRP COATED) PIPE FITTING VALVE

## BACKING RING

With steel insert  
acc.to JIS standard  
PP grey  
法蘭鐵片10K  
DFP FHJ



DN (inch)	D1 (mm)	D2 (mm)	D3 (mm)	e (mm)	n Number	T (mm)	SDR33 ISO 519 PN10
							Code
1/2"	28	70	96	15	4	12	31-FHJ-11-0020
3/4"	34	75	100	15	4	14	31-FHJ-11-0025
1"	42	90	125	19	4	14	31-FHJ-11-0032
1-1/4"	51	100	135	19	4	14	31-FHJ-11-0040
1-1/2"	62	105	140	19	4	16	31-FHJ-11-0050
2"	78	120	155	19	4	16	31-FHJ-11-0063
2-1/2"	92	140	175	19	4	16	31-FHJ-11-0075
3"	110	150	185	19	8	18	31-FHJ-11-0090
4"	133	175	210	19	8	18	31-FHJ-11-0110
5"	160	215	250	23	8	20	31-FHJ-11-0140
6"	178	240	280	23	8	21	31-FHJ-11-0160
8"	238	290	330	23	8	21	31-FHJ-11-0225
10"	288	355	400	25	12	24	31-FHJ-11-0250
12"	338	400	445	25	16	26	31-FHJ-11-0315
▲ 14"	376	445	490	25	16	28	31-FHJ-11-0355
▲ 16"	430	510	560	27	16	28	31-FHJ-11-0400
▲ 18"	517	585	620	27	20	30	31-FHJ-11-0450
▲ 20"	533	620	675	27	20	30	31-FHJ-11-0500
▲ 24"	645	730	795	33	24	30	31-FHJ-11-0630

▲鋼製製品(Steel ones)

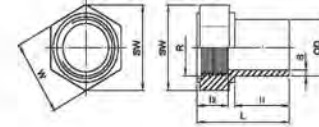


# PVDF/PVDF(FRP COATED) PIPE FITTING VALVE

## PVDF ADAPTOR

with female thread  
for butt welding  
molded from PVDF

對接內牙閥接頭  
DFP FD1

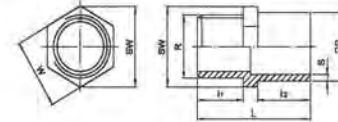


OD (mm)	S (mm)	L <sup>+2.5</sup> (mm)	L1 <sup>+1.5</sup> (mm)	L2 <sup>+1.5</sup> (mm)	R	WxSW (mm)	SDR21 ISO 510 PN16
							code
20	1.9	45.7	21.4	16.2	1/2" BSP	32.0x35.0	51-FD1-33-0020
25	1.9	50.8	25.5	17.0	3/4" BSP	40.5x44.6	51-FD1-33-0025
32	2.4	58.0	30.5	20.0	1" BSP	45.6x50.5	51-FD1-33-0032
40	2.4	62.5	30.0	24.0	1-1/4" BSP	54.0x59.5	51-FD1-33-0040
50	3.0	69.0	34.5	24.6	1-1/2" BSP	69.0x76.2	51-FD1-33-0050
63	3.0	75.0	36.5	28.2	2" BSP	83.6x93.0	51-FD1-33-0063

## PVDF ADAPTOR

with male thread  
for butt welding  
molded from PVDF

對接外牙閥接頭  
DFP MD1



OD (mm)	S (mm)	L <sup>+2.5</sup> (mm)	L1 <sup>+1.5</sup> (mm)	L2 <sup>+1.5</sup> (mm)	R	WxSW <sup>+1.5</sup> (mm)	SDR21 ISO 510 PN16
							code
20	1.9	46.5	18.5	20.0	1/2" BSP	21.8x24.0	51-MD1-33-0020
25	1.9	51.8	20.5	23.0	3/4" BSP	26.7x29.6	51-MD1-33-0025
32	2.4	61.8	24.2	28.5	1" BSP	35.6x39.6	51-MD1-33-0032
40	2.4	67.7	27.2	30.0	1-1/4" BSP	45.7x50.7	51-MD1-33-0040
50	3.0	75.0	29.2	33.5	1-1/2" BSP	55.0x61.0	51-MD1-33-0050
63	3.0	80.0	32.0	35.7	2" BSP	64.3x71.3	51-MD1-33-0063





# PVDF/PVDF(FRP COATED) PIPE FITTING VALVE

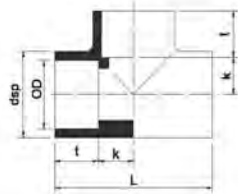


# PVDF/PVDF(FRP COATED) PIPE FITTING VALVE

## PVDF TEE

for socket welding  
molded from PVDF

套接三通  
DFP TT3

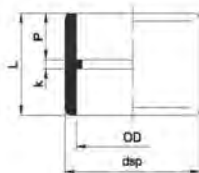


OD (mm)	dsp <sup>±1</sup> (mm)	k (mm)	t (mm)	L <sup>±1</sup> (mm)	SDR17 ISO S8 PN20	
					Code	Weight (kg/Pc.)
16	24.0	12.30	14.6	53.8	51-TT3-17-0016	0.035
20	29.0	14.35	15.4	59.5	51-TT3-17-0020	0.052
25	34.8	16.55	17.2	67.5	51-TT3-17-0025	0.078
32	42.5	20.15	19.6	79.5	51-TT3-17-0032	0.122
40	51.6	25.60	21.2	93.6	51-TT3-17-0040	0.198
50	63.7	29.35	24.0	108.7	51-TT3-17-0050	0.316
63	80.0	33.70	27.8	123.0	51-TT3-17-0063	0.548
75	91.6	43.20	32.4	151.2	51-TT3-17-0075	0.814
90	111.7	54.25	37.0	182.5	51-TT3-17-0090	1.465
110	133.4	66.65	43.0	206.8	51-TT3-17-0110	1.930

## PVDF SOCKET

for socket welding  
molded from PVDF

平接頭  
DFP CL2

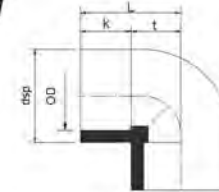


OD (mm)	dsp <sup>±1</sup> (mm)	k <sup>±1.6</sup> (mm)	p (mm)	L <sup>±1.5</sup> (mm)	SDR17 ISO S8 PN20	
					Code	Weight (kg/Pc.)
16	24.0	4.2	14.5	33.2	51-CL2-17-0016	0.016
20	28.9	4.0	15.5	35.0	51-CL2-17-0020	0.023
25	35.0	5.0	17.0	39.0	51-CL2-17-0025	0.035
32	43.0	4.0	19.5	43.0	51-CL2-17-0032	0.053
40	51.7	5.0	21.0	47.0	51-CL2-17-0040	0.077
50	63.7	5.0	24.0	53.0	51-CL2-17-0050	0.123
63	80.0	4.7	28.0	60.7	51-CL2-17-0063	0.221
75	91.0	5.5	32.0	69.5	51-CL2-17-0075	0.278
90	112.7	6.0	36.5	79.0	51-CL2-17-0090	0.532
110	132.5	6.8	42.5	91.8	51-CL2-17-0110	0.742

## PVDF 90° ELBOW

for socket welding  
molded from PVDF

套接90° 彎頭  
DFP L92



OD (mm)	dsp (mm)	t (mm)	k (mm)	L (mm)	SDR17 ISO S8 PN20	
					Code	Weight (kg/Pc.)
16	24.1	10.00	14.5	24.50	51-L92-17-0016	0.023
20	28.8	14.80	15.3	30.10	51-L92-17-0020	0.038
25	35.0	15.30	17.2	32.50	51-L92-17-0025	0.055
32	42.5	20.75	19.5	40.25	51-L92-17-0032	0.093
40	52.0	25.00	21.2	46.20	51-L92-17-0040	0.146
50	63.7	29.00	24.1	53.10	51-L92-17-0050	0.231
63	80.3	35.00	28.0	63.00	51-L92-17-0063	0.430
75	91.7	39.00	32.4	71.40	51-L92-17-0075	0.552
90	112.0	47.30	37.0	84.30	51-L92-17-0090	1.107
110	132.0	58.00	42.5	100.5	51-L92-17-0110	1.579

## PVDF 45° ELBOW

for socket welding  
molded from PVDF

套接45° 彎頭  
DFP L46



OD (mm)	dsp (mm)	t (mm)	k (mm)	L (mm)	SDR17 ISO S8 PN20	
					Code	Weight (kg/Pc.)
16	24.1	4.25	14.5	18.75	51-L4617-0016	0.018
20	29.3	5.20	15.3	20.5	51-L4617-0020	0.028
25	35.2	6.60	17.2	23.8	51-L4617-0025	0.043
32	43.0	7.10	19.5	26.6	51-L4617-0032	0.066
40	52.2	10.0	21.2	31.2	51-L4617-0040	0.104
50	64.2	10.9	24.1	35.0	51-L4617-0050	0.168
63	81.0	17.8	28.0	45.8	51-L4617-0063	0.335
75	91.6	16.1	32.4	48.5	51-L4617-0075	0.407
90	112.0	21.8	37.0	58.8	51-L4617-0090	0.520
110	132.0	30.0	42.5	72.5	51-L4617-0110	0.772



# PVDF/PVDF(FRP COATED) PIPE FITTING VALVE

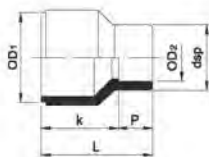


# PVDF/PVDF(FRP COATED) PIPE FITTING VALVE

## PVDF REDUCER

for socket welding  
molded from PVDF

套接大小頭  
DFP RC2

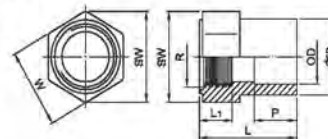


OD1/OD2 (mm)	dsp (mm)	k (mm)	p (mm)	L (mm)	SDR17 ISO 88 PN20	
					Code	Weight (kg/p.c.)
20/16	23.7	20.5	14.5	35.0	51-RC2-17-020016	0.013
25/16	23.7	25.5	14.5	40.0	51-RC2-17-025016	0.017
25/20	29.0	24.3	15.4	39.7	51-RC2-17-025020	0.020
32/20	28.8	28.9	15.1	44.0	51-RC2-17-032020	0.028
32/25	34.7	26.7	17.3	44.0	51-RC2-17-032025	0.034
40/20	28.7	33.5	15.5	49.0	51-RC2-17-040020	0.040
40/25	34.7	31.6	17.4	49.0	51-RC2-17-040025	0.045
40/32	42.3	29.6	19.4	49.0	51-RC2-17-040032	0.052
50/20	28.6	39.7	15.1	54.8	51-RC2-17-050020	0.056
50/25	34.8	38.6	16.2	54.8	51-RC2-17-050025	0.065
50/32	42.6	35.1	19.4	54.5	51-RC2-17-050032	0.068
50/40	51.2	32.8	21.7	54.5	51-RC2-17-050040	0.078
63/25	34.9	46.8	17.2	64.0	51-RC2-17-063025	0.099
63/32	42.7	43.9	19.5	63.4	51-RC2-17-063032	0.101
63/40	51.8	42.0	21.7	63.7	51-RC2-17-063040	0.119
63/50	63.6	40.1	23.9	64.0	51-RC2-17-063050	0.140
75/63	80.7	36.1	27.9	64.0	51-RC2-17-075063	0.201
90/63	80.0	58.3	28.0	86.3	51-RC2-17-090063	0.333
90/75	91.4	54.0	32.2	86.2	51-RC2-17-090075	0.350
110/63	80.7	59.0	28.0	87.0	51-RC2-17-110063	0.449
110/90	111.8	50.3	36.2	86.5	51-RC2-17-110090	0.531

## PVDF ADAPTOR

with female thread  
for socket welding  
molded from PVDF

套接內牙閥接頭  
DFP FD2

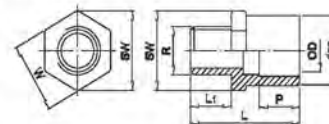


OD (mm)	dsp <sup>1</sup> (mm)	L <sup>1,2</sup> (mm)	P <sup>10,3</sup> (mm)	L <sup>3,1</sup> (mm)	R (mm)	W:SW <sup>2,10</sup> (mm)	SDR17 ISO 88 PN20 code
20	28.5	45.4	29.0	16.0	1/2" BSP	31.8x35.1	51-FD2-17-0020
25	34.4	50.7	33.2	17.0	3/4" BSP	40.5x44.2	51-FD2-17-0025
32	42.8	57.5	37.2	20.0	1" BSP	45.7x50.3	51-FD2-17-0032
40	51.5	62.7	38.3	24.0	1-1/4" BSP	54.7x59.9	51-FD2-17-0040
50	63.5	68.9	43.7	24.5	1-1/2" BSP	69.0x76.2	51-FD2-17-0050
63	79.0	74.1	45.3	28.5	2" BSP	83.6x92.8	51-FD2-17-0063

## PVDF ADAPTOR

with male thread  
for socket welding  
molded from PVDF

套接外牙閥接頭  
DFP MD2



OD (mm)	dsp <sup>1</sup> (mm)	L <sup>1,5</sup> (mm)	L <sup>1,1</sup> (mm)	P <sup>10,3</sup> (mm)	R (mm)	W:SW <sup>2,1</sup> (mm)	SDR17 ISO 88 PN20 code
20	28.4	46.5	18.5	19.8	1/2" BSP	30.3x33.3	51-MD2-17-0020
25	34.3	51.5	20.8	22.6	3/4" BSP	36.8x40.8	51-MD2-17-0025
32	42.5	61.5	24.0	28.3	1" BSP	44.3x49.1	51-MD2-17-0032
40	51.5	67.4	27.7	29.4	1-1/4" BSP	53.5x59.0	51-MD2-17-0040
50	63.5	74.5	29.0	33.0	1-1/2" BSP	65.0x72.0	51-MD2-17-0050
63	79.3	79.4	32.0	35.0	2" BSP	81.1x90.2	51-MD2-17-0063



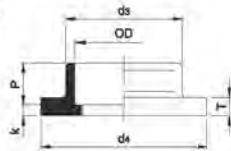


## PVDF/PVDF(FRP COATED) PIPE FITTING VALVE

### PVDF FLANGE

ADAPTORS  
for socket welding  
molded from PVDF

套接中間法蘭  
DFP FT2

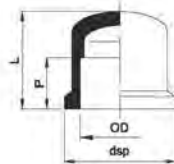


OD (mm)	ds (mm)	d1 (mm)	t (mm)	k (mm)	p (mm)	L (mm)	SDR21 ISO S8 PN20	
							Code	Weight (kg/Pc.)
20	27.5	44.6	8.5	3.7	15.6	19.3	51-FT2-17-0020	0.240
25	33.0	57.4	9.2	3.4	18.3	21.7	51-FT2-17-0025	0.420
32	41.4	67.3	10.6	4.0	20.0	24.0	51-FT2-17-0032	0.640
40	50.5	77.2	10.3	5.0	22.5	27.5	51-FT2-17-0040	0.860
50	81.0	87.2	13.5	5.4	24.2	29.8	51-FT2-17-0050	0.128
63	75.8	100.7	13.7	5.0	26.0	33.0	51-FT2-17-0063	0.169
75	90.2	120.3	16.3	5.3	32.3	37.8	51-FT2-17-0075	0.282
90	107.8	136.0	17.5	5.2	35.3	40.5	51-FT2-17-0090	0.375
110	129.8	154.7	18.5	7.1	41.4	48.5	51-FT2-17-0110	0.531

### PVDF END CAP

for socket welding  
molded from PVDF

套接管帽  
DFP CP2



OD (mm)	dsp <sup>+1.5</sup> (mm)	L <sup>+1.6</sup> (mm)	p (mm)	SDR17 ISO S8 PN20	
				Code	Weight (kg/Pc.)
16	24.1	23.9	14.5	51-CP2-17-0016	0.012
20	29.2	26.9	15.5	51-CP2-17-0020	0.018
25	35.1	30.3	17.0	51-CP2-17-0025	0.029
32	43.4	35.0	19.5	51-CP2-17-0032	0.046
40	52.1	39.0	21.6	51-CP2-17-0040	0.069
50	84.0	49.0	24.0	51-CP2-17-0050	0.119
63	81.0	58.5	26.2	51-CP2-17-0063	0.236
75	92.0	65.5	33.0	51-CP2-17-0075	0.287
90	112.5	76.0	37.0	51-CP2-17-0090	0.535
110	132.5	92.0	42.7	51-CP2-17-0110	0.806

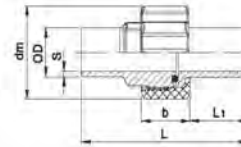


## PVDF/PVDF(FRP COATED) PIPE FITTING VALVE

### PVDF UNIONS

for butt welding  
Tekwelding IR-welding  
molded from PVDF

對接油任  
DFP EU1

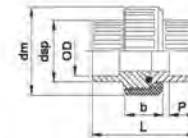


OD (mm)	S (mm)	L <sup>+2.5</sup> (mm)	L1 (mm)	dm <sup>+1.5</sup> (mm)	b <sup>+1.5</sup> (mm)	SDR21 ISO S10 PN18
						Code
20	1.9	109.0	37.5	47.0	24.5	51-EU1-21-0020
25	1.9	117.0	39.0	57.5	26.2	51-EU1-21-0025
32	2.4	120.2	39.5	64.0	30.5	51-EU1-21-0032
40	2.4	128.1	42.0	78.7	31.2	51-EU1-21-0040
50	3.0	131.7	46.0	88.5	35.0	51-EU1-21-0050
63	3.8	141.4	46.0	107.6	38.7	51-EU1-21-0063

### PVDF UNIONS

for socket welding  
molded from PVDF

套接油任  
DFP EU2



OD (mm)	dsp <sup>+1.5</sup> (mm)	L <sup>+2.5</sup> (mm)	P (mm)	dm <sup>+1.5</sup> (mm)	b <sup>+1.5</sup> (mm)	SDR17 ISO S8 PN20
						Code
20	28.5	56.0	15	45.5	22.0	51-EU2-17-0020
25	35.2	63.0	20	59.0	26.4	51-EU2-17-0025
32	43.0	68.5	20	67.2	28.0	51-EU2-17-0032
40	50.1	80.0	25	78.0	29.5	51-EU2-17-0040
50	59.0	89.0	24	85.5	33.0	51-EU2-17-0050
63	74.0	101.2	27	96.5	39.5	51-EU2-17-0063
75	91.5	114.0	31	146.0	48.5	51-EU2-17-0075
90	107.5	133.0	35	176.5	64.0	51-EU2-17-0090
110	133.0	152.0	45	187.5	78.5	51-EU2-17-0110



# PVDF/PVDF(FRP COATED) PIPE FITTING VALVE



# PVDF/PVDF(FRP COATED) PIPE FITTING VALVE

## PVDF ROUND BARS

NATURAL  
molded from PVDF

圓棒  
DFP PR1

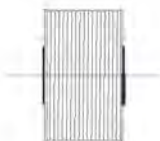


OD (mm)	Weight (mm)	Code
10	0.15	51-PR1-0010
12	0.20	51-PR1-0012
15	0.34	51-PR1-0015
20	0.59	51-PR1-0020
25	0.91	51-PR1-0025
30	1.30	51-PR1-0030
40	2.31	51-PR1-0040
50	3.61	51-PR1-0050
60	5.17	51-PR1-0060
75	8.21	51-PR1-0075
80	9.22	51-PR1-0080
90	11.67	51-PR1-0090
100	14.42	51-PR1-0100
125	22.35	51-PR1-0125
160	36.17	51-PR1-0160
180	45.76	51-PR1-0180
200	56.52	51-PR1-0200

## WELDING ROD

NATURAL  
molded from PVDF

焊條  
DFP PW1

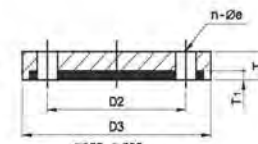
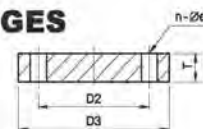


Design	Diameter (mm)	Weight (kg/coil)	Code
Welding rod extruded, round	∅3	ca.4.5kg	51-PW1-0003
	∅4	ca.4.5kg	51-PW1-0004

## PVDF BLIND FLANGES

MACHINED DIN  
molded from PVDF

盲法蘭 DIN  
DFP FB1



鋼板加PVDF板(steel w/PVDF sheet)

OD (mm)	D2 (mm)	D3 (mm)	a (mm)	n Number	T (mm)	T <sub>1</sub> (mm)	Code
20	65	95	14	4	16	-	51-FB1-33-020D
25	75	105	14	4	14	-	51-FB1-33-025D
32	85	115	14	4	18	-	51-FB1-33-032D
40	100	140	18	4	18	-	51-FB1-33-040D
50	110	150	18	4	19	-	51-FB1-33-050D
63	125	165	18	4	19	-	51-FB1-33-063D
75	145	185	18	4	19	-	51-FB1-33-075D
90	160	200	18	8	23	-	51-FB1-33-090D
110	180	220	18	8	23	-	51-FB1-33-110D
125	180	220	18	8	23	-	51-FB1-33-125D
140	210	250	18	8	23	-	51-FB1-33-140D
160	240	285	23	8	23	-	51-FB1-33-160D
180	240	285	23	8	23	-	51-FB1-33-180D
200	295	340	23	8	23	-	51-FB1-33-200D
225	295	340	23	8	23	-	51-FB1-33-225D
250	350	390	23	12	25	-	51-FB1-33-250D
280	350	395	23	12	25	-	51-FB1-33-280D
315	400	445	23	12	25	-	51-FB1-33-315D
355	460	505	30	16	28	8	51-FB1-33-355D
400	515	565	30	16	28	8	51-FB1-33-400D
450	620	670	30	20	30	8	51-FB1-33-450D
500	620	670	30	20	30	8	51-FB1-33-500D
560	725	780	30	20	30	8	51-FB1-33-560D
630	725	780	30	20	30	8	51-FB1-33-630D





# PVDF/PVDF(FRP COATED) PIPE FITTING VALVE

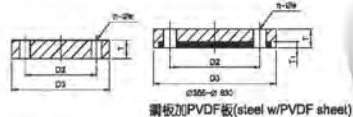


# PVDF/PVDF(FRP COATED) PIPE FITTING VALVE

## PVDF BLIND FLANGE

MACHINED ANSI  
molded from PVDF

盲法蘭 ANSI  
DFP FT7

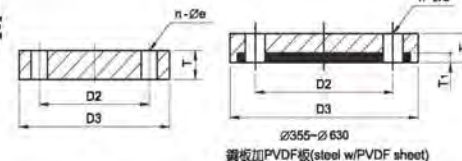


OD (mm)	DN (Inch)	D2 (mm)	D3 (mm)	a (mm)	n Number	T (mm)	T1 (mm)	Code
20	1/2"	60	89	16	4	16	-	51-FT7-33-020A
25	3/4"	70	98	16	4	14	-	51-FT7-33-025A
32	1"	79	106	16	4	18	-	51-FT7-33-032A
40	1-1/4"	89	117	16	4	18	-	51-FT7-33-040A
50	1-1/2"	98	127	16	4	19	-	51-FT7-33-050A
63	2"	121	152	19	4	19	-	51-FT7-33-063A
75	2-1/2"	140	178	19	4	19	-	51-FT7-33-075A
90	3"	152	191	19	4	23	-	51-FT7-33-090A
110	4"	191	229	19	8	23	-	51-FT7-33-110A
140	5"	216	254	22	8	23	-	51-FT7-33-140A
180	6"	241	279	22	8	23	-	51-FT7-33-180A
200	8"	298	343	22	8	23	-	51-FT7-33-200A
250	10"	362	406	25	12	25	-	51-FT7-33-250A
315	12"	432	483	25	12	25	-	51-FT7-33-315A
355	14"	476	533	29	12	28	8	51-FT7-33-355A
400	16"	540	597	29	16	28	8	51-FT7-33-400A
450	18"	578	635	32	16	30	8	51-FT7-33-450A
500	20"	635	699	32	20	30	8	51-FT7-33-500A
630	24"	749	813	35	20	30	8	51-FT7-33-630A

## PVDF BLIND FLANGE

MACHINED JIS 10K  
molded from PVDF

盲法蘭 JIS 10K  
DFP FT7



OD (mm)	DN (Inch)	D2 (mm)	D3 (mm)	a (mm)	n Number	T (mm)	T1 (mm)	Code
20	1/2"	70	95	15	4	16	-	51-FT7-33-020J
25	3/4"	75	100	15	4	14	-	51-FT7-33-025J
32	1"	90	125	19	4	18	-	51-FT7-33-032J
40	1-1/4"	100	135	19	4	18	-	51-FT7-33-040J
50	1-1/2"	105	140	16	4	19	-	51-FT7-33-050J
63	2"	120	155	19	4	19	-	21-FT7-33-063J
75	2-1/2"	140	175	19	4	19	-	21-FT7-33-075J
90	3"	150	185	19	8	23	-	21-FT7-33-090J
110	4"	175	210	19	8	23	-	21-FT7-33-110J
140	5"	210	250	23	8	23	-	21-FT7-33-140J
180	6"	240	280	23	8	23	-	21-FT7-33-180J
200	8"	290	330	23	12	23	-	21-FT7-33-200J
250	10"	355	400	25	12	25	-	21-FT7-33-250J
315	12"	400	445	25	16	25	-	21-FT7-33-315J
355	14"	445	490	25	16	25	8	21-FT7-33-355J
400	16"	510	560	27	16	28	8	21-FT7-33-400J
450	18"	565	620	27	20	30	8	21-FT7-33-450J
500	20"	620	675	27	20	30	8	21-FT7-33-500J
630	24"	730	795	33	24	30	8	21-FT7-33-630J



# PVDF/PVDF(FRP COATED) PIPE FITTING VALVE

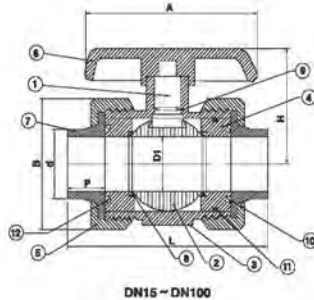


# PVDF/PVDF(FRP COATED) PIPE FITTING VALVE

## TRUE UNION BALL VALVE (Butt Welding type)

雙由任球閥(面對面焊接型)

CW1000 Size:1/2"- 4"



### MATERIALS OF CONSTRUCTION

Item	Parts	Pcs	Material	Item	Parts	Pcs	Material
1	STEM	1	PP,PVDF	7	CONNECTOR	2	PP,PVDF
2	BALL	1	PP,PVDF	8	SEAT	2	PTFE
3	BODY	1	PP,PVDF	9	STEM O-RING	DN15-50 1 DN65-100 2	EPDM,VITON
4	SEAT CARRIER	1	PP,PVDF	10	SEAT CARRIER O-RING	1	EPDM,VITON
5	UNION NUT	2	PP,PVDF	11	BODY O-RING	1	EPDM,VITON
6	HANDLE	1	ABS	12	SOLID END O-RING	1	EPDM,VITON

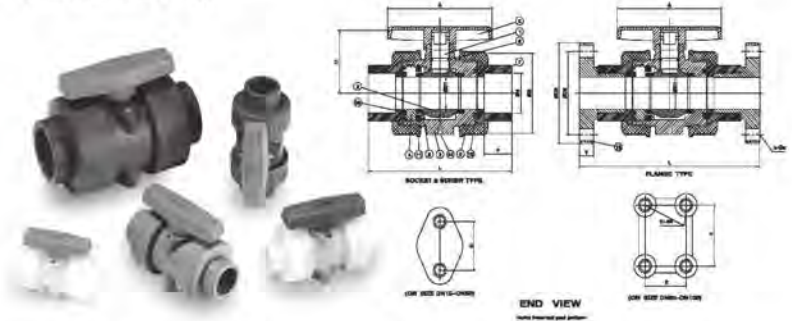
### DIMENSIONS TABLE

Nom Size DN-inch	DIN							Unit:mm	
	D1	d	P	L	A	H	B	Working Pressure kgf/cm <sup>2</sup>	Test Pressure
	15(1/2")	14	20	16.0	163	82	51		
20(3/4")	19	25	18.5	174	101	64	60	6.7	10
25(1")	25	32	22.0	178.5	111	70	68	6.7	10
32(1-1/4")	38	40	26.0	192	126	83	80	6.7	10
40(1-1/2")	38	50	31.0	198	126	83	92	6.7	10
50(2")	49	63	37.5	208	152	102	111	6.7	10
65(2-1/2")	67	75	43.5	212.5	190	140	148	4.7	7
80(3")	78	90	51.0	309	230	165	181	4.7	7
100(4")	101	110	61.0	358	274	172	222	4.7	7

## TRUE UNION SAFETY BLOCK BALL VALVE WITH MOUNTING PADS

安全球閥加埋銅座

CH100 SOCKET/ CH200 THERAD/ CH300 FLANGED  
Size:DN15-DN100



### MATERIALS OF CONSTRUCTION

NO.	Parts	Pcs.	Materials	NO.	Parts	Pcs.	Materials
1	STEM	1	UPVC, PP, CPVC, PVDF	8	SEAT	2	TEFLON
2	BALL	1	UPVC, PP, CPVC, PVDF	9	STEM ORING	DN 15-50 1 DN 65-100 2	EPDM, VITON
3	BODY	1	UPVC, PP, CPVC, PVDF	10	SEAT CARRIER ORING	1	EPDM, VITON
4	SEAT CARRIER	1	UPVC, PP, CPVC, PVDF	11	BODY ORING	1	EPDM, VITON
5	UNION NUT	2	UPVC, PP, CPVC, PVDF	12	SOLID END ORING	1	EPDM, VITON
6	HANDLE	1	ABS	14	MOUNTING PAD (UP & DOWN)	DN15-50 4 DN65-100 8	BRASS, SUS304
7	END CONNECTOR	2	UPVC, PP, CPVC, PVDF	15	FLANGES	2	UPVC, PP, CPVC, PVDF

### DIMENSIONS TABLE

Nom Size DN (inch)	DIN																	Unit: mm		
	D1	D2	D3	d		e	f	P	L			H	A	B	T	K	E	S	S1	Working pressure (kgf/cm <sup>2</sup> )
	Socket	Thread	Socket	Thread	Flange	Socket	Thread	Flange	H	A	B	T	K	E	S	S1				
15(1/2")	15	66	66	20	R1/2"	14	4	16.0	115	115	152	51	82.7	53.2	15	31	-	3/16"24G	4	10
20(3/4")	19	75	105	25	3/4"	14	4	18.5	126	126	163	63	101.2	63	15	37	-	1/4"20G	4	10
25(1")	25	85	115	32	1"	14	4	22.0	144	144	187	72	111.8	72.2	17	40	-	1/4"20G	4	10
32(1-1/4")	38	100	140	40	1-1/4"	18	4	26.0	163	183	225	86	121.4	97	17	55	-	5/16"18G	4	10
40(1-1/2")	38	110	150	50	1-1/2"	18	4	31.0	183	183	232	86	121.4	97	19	55	-	5/16"18G	4	10
50(2")	48	120	165	63	2"	18	4	37.5	202	202	263	100	146.3	118.9	21	68	-	5/16"18G	4	10
65(2-1/2")	65	145	185	75	R2-1/2"	18	4	43.5	228	228	282	140	190	150.1	21	80	41	5/16"18G	8	7
80(3")	75	160	200	90	R3"	18	8	51.0	270	270	327	165.1	230.1	183.9	22	80	41	5/16"18G	8	7
100(4")	102	180	220	110	R4"	18	8	61.0	324	324	385	172	274	226	22	121	50	5/16"18G	8	7

※ 本尺寸圖以PVC材質為基準。PVDF材質為基準。PP材質則應以本表尺寸之70%為準。

※ The dimension table is calculated based on PVC material.  
※ The value of test pressure is calculated based on PVC/PVDF materials.  
※ The value of test pressure for PP material is 70% based on this table.



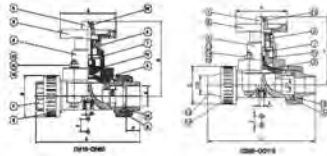


# PVDF/PVDF(FRP COATED) PIPE FITTING VALVE

## TRUE UNION DIAPHRAGM VALVE

油任式隔膜閥 (插管式、牙口式、對接式)

DF100 SOCKET / DF200 THREA / DW300 BUTT WELDING



### TORQUE VALUE(扭力值)

SIZE	Kg.m	Nm
1/2"-3/4"	80	7.85
1"	80	7.85
1-1/2"	100	9.81
2"	100	9.81

1Kg.m=9.8N.m

### CV VALUE

CV VALUE [GMP/(1 lbf/in <sup>2</sup> ) <sup>2</sup> ]	
OPENING:100%	
尺寸	CV值
1/2"	3.27
3/4"	5.29
1"	8.87
1-1/2"	31.09
2	43.15

### MATERIALS OF CONSTRUCTION

Item	Parts	Pcs	Materials	Item	Parts	Pcs	Materials
1	Shaft	1	BRASS	9	Gauge Cover	1	PC
2	Diaphragm	1	EPDM, TEFLON	10	O'ring	2	EPDM, VITON
3	Body	1	UPVC, PP, CPVC, PVDF	11	Compressor	1	15A-25A PVDF 32A-55A PPG
4	Sleeve	1	BRASS	12	Indicator	1	PE
5	Union Nut	2	UPVC, PP, CPVC, PVDF	13	Bolt	4	SUS304
6	Handle	1	ABS	14	Nut	4	SUS304
7	End Connector	2	UPVC, PP, CPVC, PVDF	15	Washer spring washer	8	SUS304
8	Bonnet	1	UPVC, PP, CPVC, PVDF				

### DIMENSIONS TABLE

Nom. Size mm(inch)	DIN										Unit:mm	
	d		P	B	L		H	A	F	K	Test Pres (kgf/cm <sup>2</sup> )	
	Socket	Thread			Socket Thread	Butt Welding					Pipe Dia.	Rubber Dis.
OD20-1/2"	20	R1/2	18.0	54	166	206.5	104	81	25	8	7	10
OD25-3/4"	25	R1/4	18.5	54	166	206.5	104	81	25	8	7	10
OD32-1"	32	R1	22.0	83	183	216	116	91	25	8	7	10
OD40-1 1/4"	40	R1-1/4	28.0	89	238	253	142	117	45	8	7	10
OD50-1 1/2"	50	R1-1/2	31.0	89	238	253	142	117	45	8	7	10
OD63-2"	63	R2	37.5	101	273	281.5	176	150	45	8	7	10

\*Standard dimensions based on PVC material



# PVDF/PVDF(FRP COATED) PIPE FITTING VALVE

## DIAPHRAGM VALVE / Flanged type

隔膜凡而(法蘭式)

DF300

Size: DN15~DN250



### MATERIALS OF CONSTRUCTION

No.	Parts	Pcs	Materials	No.	Parts	Pcs	Materials
1	Body	1	UPVC, PP, CPVC, PVC, PVDF	11	Grease Nipple	1	SUS304
2	Bonnet	1	PP,UPVC, PP, CPVC, PVDF	12	Stud Bolt & Nut	4	15A-25A 40A-55A 8 85A-155A
3	Compressor	1	15A-25A PVDF 40A-250A FC20	13	Inserted Nut	8	15A 12 300A
4	Hand Wheel	1	PP, ABS	14	Bolt Nut & Washer	20	SUS304
5	Sleeve	1	15A-50A BS3M 85A-250A FC25	15	Strut Bearing	1	Standard ISO 250A USED ONLY
6	Stem	1	15A-25A BS3M 85A-250A SS41	16	Stopper	1	SS-41 BS3M SUS304
7	Diaphragm	1	EPDM, HYPALON TEFLON	17	Set Nut	1	SS41 BS3M SUS304
8	Cap	1	15A-25A BS3M 40A-250A UPVC	18	Gauge Cover	1	PC
9	Compressor Pin	1	SUS-304	19	Sheet Ring	1	EPDM
10	Name Plate	1	UPVC	20	Washer	1	SUS304

Note: 1. SUS 304 ... Stainless Steel AISI 304 2. SS 41 ... Rolled steel for General Structure 3. BS3M ... Free Cutting Brass Bar

4. FC 25... Grey Cast Iron 5. SUS ... Steel for Spring ASTM A-307-68

※ 15A - 5 - 8 - 12 - 14 尺寸材質均用 SUS-304 或 SUS-316 鋼製規格。其他尺寸 - 備有另訂。

※ PVDF 隔膜閥上蓋(BONNET)部份採用 PPG，如欲選用 PVDF 上蓋者請向本公司洽詢。

The standard material to bonnet: PPG.

Optional PVDF bonnet material for PVDF diaphragm valve.

Optional materials on request for part no. 4,5,6,12,14.: SUS 304 or SUS 316.

EPDM & TEFLON are trademarks of E. I. Du Pont

### DIMENSIONS TABLE

Nom. Size mm(inch)	JIS										PRESS Test for Assembly (at 20°C)											
	Unit: mm										Test Pressure Unit: kgf/cm <sup>2</sup>											
	D1	D2	D3	e	n No. of Inches	D4	D5	Lift ℓ	L	T	H	I	Rubber Diaphragm					Teflon Diaphragm				
	UPVC	PP	PPG	CPVC	PVDF	UPVC	PP	PPG	CPVC	PVDF	UPVC	PP	PPG	CPVC	PVDF							
15 (1/2")	18	70	95	15	4	30x3	94	13	110	15	101	140	10	10	10	10	10	10	7	7	10	7
20 (3/4")	20	75	100	15	4	40x3	94	13	120	18	106	152	10	10	10	10	10	10	7	7	10	7
25 (1")	25	80	125	18	4	40x6	94	14	130	16	113	158	10	10	10	10	10	10	7	7	10	7
40 (1-1/2")	41	105	140	18	4	128	147	24	180	17	133	193	10	10	10	10	10	10	7	7	7	7
50 (2")	52	120	155	18	4	148	147	28	210	17	145	210	10	10	10	10	10	10	7	7	7	7
65 (2-1/2")	65	140	175	19	4	190	202	32	250	22	197	275	10	10	10	10	10	10	7	7	7	7
80 (3")	78	150	185	19	8	215	202	34	290	22	218	293	10	10	10	10	10	10	6	5	6	6
100 (4")	100	175	210	19	8	255	241	54	340	22	261	370	10	10	10	10	10	10	6	5	6	6
125 (5")	125	210	250	23	8	320	274	72	410	24	308	412	7	7	7	7	7	7	5	4	4	5
150 (6")	148	240	280	23	8	365	386	72	480	30	334	471	7	7	7	7	7	7	5	4	4	5
200 (8")	198	290	330	23	12	430	395	96	570	30	419	625	4	4	4	4	4	4	3	3	3	3
250 (10")	248	355	400	25	12	540	555	132	680	32	510	750	4	3	4	4	4	4	3	3	3	3



# PVDF/PVDF(FRP COATED) PIPE FITTING VALVE



# PVDF/PVDF(FRP COATED) PIPE FITTING VALVE

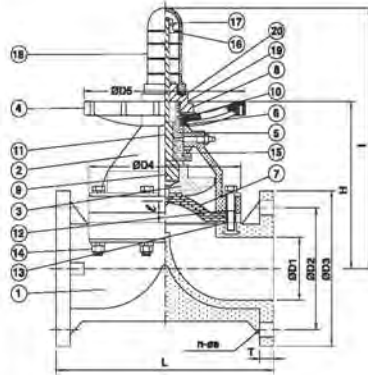
### CV VALUE

尺寸	CV值
Full Open: 100%	
1/2"	3.27
3/4"	5.29
1"	8.67
1-1/2"	31.09
2"	43.15
2-1/2"	90.68
3"	116.79
4"	186.78
6"	345.26
8"	702
10"	-

### BOLTS TORQUE VALUE

SIZE	Kg.cm	N.m
1/2"	90	8.63
3/4"	110	10.79
1"	110	10.79
1-1/2"	150	14.72
2"	220	21.58
2-1/2"	220	21.58
3"	280	27.47
4"	290	27.47
6"	280	27.47
8"	280	27.47
10"	280	27.47

Tig.cm = 0.0981N.m



### DIMENSIONS TABLE

ANSI		Unit: inch																				
		PRESS Test for Assembly (at 20°C)																				
Nom. Size n(Nom)	D1	D2	D3	n	No. of holes	D4	D5	Lift L	L	T	H	I	Test Pressure Unit: psi									
													Rubber Diaphragm					Teflon Diaphragm				
													UPVC	PP	PPG	CPVC	PVDF	UPVC	PP	PPG	CPVC	PVDF
18(1/2")	0.83	2.38	3.50	0.53	4	2.35x2.09	3.70	0.51	4.25	0.58	3.98	6.51	150	150	150	150	150	105	105	105	105	105
20(3/4")	0.79	2.78	3.85	0.53	4	2.80x2.48	3.70	0.51	5.90	0.63	4.17	5.98	150	150	150	150	150	105	105	105	105	105
25(1")	0.98	3.13	4.25	0.53	4	31.5x2.80	3.70	0.58	5.90	0.63	4.45	6.22	150	150	150	150	150	105	105	105	105	105
40(1-1/2")	1.81	3.88	5.00	0.53	4	4.96	5.79	0.94	6.96	0.67	5.24	7.60	150	150	150	150	150	105	105	105	105	105
50(2")	2.05	4.74	5.98	0.75	4	5.83	5.79	1.10	7.95	0.87	5.71	8.27	150	150	150	150	150	105	105	105	105	105
65(2-1/2")	2.88	5.49	7.01	0.75	4	7.48	7.96	1.28	8.85	0.87	7.78	10.87	150	150	150	150	150	105	105	105	105	105
80(3")	3.07	6.00	7.52	0.75	4	8.46	7.96	1.34	10.40	0.75	8.50	11.54	150	150	150	150	90	75	90	90	90	90
100(4")	3.84	7.50	9.02	0.75	8	10.04	9.49	2.13	12.95	0.91	10.28	14.57	150	150	150	150	90	75	90	90	90	90
125(5")	4.92	8.50	10.00	0.87	8	12.60	10.79	2.83	16.14	0.94	12.13	16.22	105	105	105	105	75	80	90	75	75	75
150(6")	5.83	9.51	10.98	0.87	8	15.16	15.36	2.83	18.90	1.18	13.15	18.54	105	105	105	105	75	80	80	75	75	75
200(8")	7.80	11.75	13.50	0.87	8	16.93	15.56	3.78	22.44	1.26	16.40	24.81	80	80	80	80	45	45	45	45	45	45
250(10")	9.76	14.25	15.98	0.98	12	21.28	21.85	5.20	28.77	1.26	20.08	29.53	80	45	80	80	45	45	45	45	45	45

DIN		Unit: mm																					
		PRESS Test for Assembly (at 20°C)																					
Nom. Size n(Nom)	D1	D2	D3	n	No. of holes	D4	D5	Lift L	L	T	H	I	Test Pressure Unit: kgf/cm²										
													Rubber Diaphragm					Teflon Diaphragm					
													UPVC	PP	PPG	CPVC	PVDF	UPVC	PP	PPG	CPVC	PVDF	
18(1/2")	16	55	95	14	4	59x53	94	13	130	23	101	140	10	10	10	10	10	7	7	10	7	7	
20(3/4")	20	75	105	14	4	74x63	94	13	150	23	106	152	10	10	10	10	10	7	7	10	7	10	7
25(1")	25	85	115	14	4	80x66	94	14	180	23	113	158	10	10	10	10	10	7	7	10	7	10	7
40(1-1/2")	41	110	150	18	4	128	147	24	200	23	133	193	10	10	10	10	7	7	7	7	7	7	7
50(2")	52	125	165	18	4	148	147	26	230	21	145	210	10	10	10	10	7	7	7	7	7	7	7
65(2-1/2")	68	145	185	18	4	190	202	32	290	22	197	278	10	10	10	10	7	7	7	7	7	7	7
80(3")	78	160	200	18	8	215	202	34	310	22	218	293	10	10	10	10	8	5	6	6	6	6	6
100(4")	100	180	220	18	8	255	241	54	350	25	261	370	10	10	10	10	8	5	6	6	6	6	6
125(5")	125	210	250	18	8	320	274	72	400	24	308	412	7	7	7	7	5	4	4	4	4	4	4
150(6")	148	240	285	23	8	385	395	72	480	30	334	471	7	7	7	7	5	4	4	4	4	4	4
200(8")	198	295	340	23	8	430	395	96	600	32	419	625	4	4	4	4	3	3	3	3	3	3	3
250(10")	248	350	395	23	12	540	555	132	680	32	510	750	4	3	4	4	3	3	3	3	3	3	3

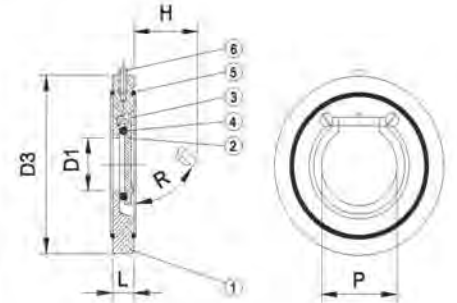
Standard dimensions based on UPVC material

## WAFFER CHECK VALVE

單片逆止閥

JT 300

Size: DN40 ~ DN600



### Applications (使用場合):

- Water and waste water treatment 水及廢水處理
- Chemical industrial 化工工業
- Environmental industrial 環境工程
- Process industrial 加工生產工業
- Systems engineering 管線系統工程

- 水及廢水處理
- 化工工業
- 環境工程
- 加工生產工業
- 管線系統工程

### Features (特點):

- Require little space in piping system 產品造型緊湊
- Economical - Simple and durable construction 經濟簡單, 結構耐用
- Easy installation - Wafer Body to slip between standard flanges 安裝簡單, 夾式安裝在一般法蘭和法蘭間
- Light Weight 重量輕
- Chemical Resistant 耐化學
- No corrosion 抗腐蝕

### MATERIALS OF CONSTRUCTION

No.	Parts	Pcs.	Materials	No.	Parts	Pcs.	Materials
1	Body	1	UPVC,PP,CPVC,PVDF	4	O'ring	1	EPDM,VITON
2	Flapper	1	UPVC,PP,CPVC,PVDF	5	O'ring	2	EPDM,VITON
3	Flapper mounting screw	2	PP	6	Installation device	1	SUS316

### DIMENSIONS TABLE

Nom. Size	JIS Unit:mm					ANSI Unit:inch				DIN Unit:mm					
	D1	D3	P	L	H	D1	D3	P	L	H	D1	D3	P	L	H
40(1-1/2")	23	95	35	16	25	0.89	3.78	1.38	0.83	0.98	23	95	35	16	25
50(2")	32	109	45	20	48	1.26	4.30	1.77	0.79	1.80	32	109	45	20	48
65(2-1/2")	40	130	80	20	51	1.57	5.12	2.38	0.79	2.00	40	130	80	20	51
80(3")	54	145	72	20	74	2.13	5.71	2.83	0.79	2.90	54	145	72	20	74
100(4")	70	184	90	22	91	2.76	6.45	3.54	0.87	3.80	70	184	90	22	91
125(5")	92	196	108	22	96	3.84	7.72	4.28	0.87	3.77	92	196	108	22	96
150(6")	112	220	132	25	147	4.40	8.88	5.19	1.02	5.80	112	220	132	25	147
200(8")	150	275	176	35	191	5.90	10.82	6.93	1.38	7.50	150	275	176	35	191
250(10")	190	330	222	40	229	7.48	12.99	8.74	1.57	9.00	190	330	222	40	229
300(12")	216	380	260	45	259	8.82	14.96	10.23	1.77	10.20	216	380	260	45	259
350(14")	268	440	300	49	245	10.47	17.32	11.81	1.93	9.84	268	440	300	49	245
400(16")	310	491	340	65	285	12.20	19.33	13.38	2.58	11.22	310	491	340	65	285
450(18")	350	541	390	68	330	13.78	21.30	15.35	2.87	13.00	350	541	390	68	330
500(20")	400	596	440	78	385	15.75	23.46	17.32	3.07	15.15	400	596	440	78	385
600(24")	450	700	490	85	430	17.72	27.55	18.29	3.34	16.92	450	700	490	85	430





# PVDF/PVDF(FRP COATED) PIPE FITTING VALVE



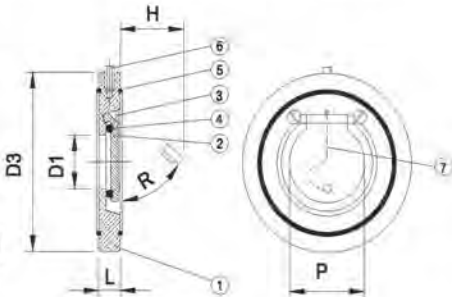
# PVDF/PVDF(FRP COATED) PIPE FITTING VALVE

## WAFLER CHECK VALVE(with springs)

單片逆止閥(有彈簧)

JT 300S

Size: DN40 ~ DN600



**Features (特點):**

- Require little space in piping system 產品造型簡潔
- Economical - Simple and durable construction 經濟堅韌, 結構耐用
- Easy Installation - Wafler Body to slot between standard flanges 安裝簡單, 安裝在一般法蘭和法蘭間
- Light Weight 重量輕
- Chemical Resistant 耐化學
- No corrosion 抗腐蝕

**Applications (使用場合):**

- Water and waste water treatment 水及廢水處理
- Chemical Industrial 化工工業
- Environmental Industrial 環境工程
- Process Industrial 加工生產工程
- Systems engineering 管務系統工程

### MATERIALS OF CONSTRUCTION

No.	Parts	Pcs.	Materials	No.	Parts	Pcs.	Materials
1	Body	1	UPVC, PP, CPVC, PVDF	5	O'ring	2	EPDM, VITON
2	Flapper	1	UPVC, PP, CPVC, PVDF	6	Installation device	1	SUS316
3	Flapper mounting screw	2	PP	7	Spring	1	SUS316
4	O'ring	1	EPDM, VITON				

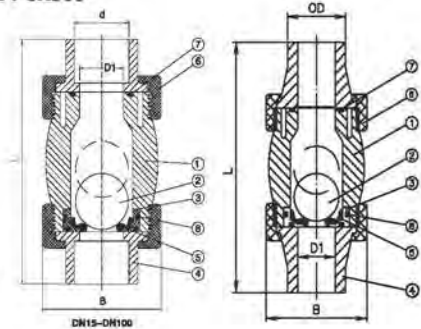
### DIMENSIONS TABLE

Nom. Size	JIS Unit:mm					ANSI Unit:inch					DIN Unit:mm				
	D1	D3	P	L	H	D1	D3	P	L	H	D1	D3	P	L	H
40(1-1/2")	23	85	35	16	25	0.86	3.76	1.38	0.63	0.99	23	85	35	16	25
50(2")	32	108	45	20	46	1.26	4.30	1.77	0.79	1.80	32	108	45	20	46
65(2-1/2")	40	130	60	20	51	1.57	5.12	2.36	0.79	2.00	40	130	60	20	51
80(3")	54	145	72	20	74	2.13	5.71	2.83	0.79	2.90	54	145	72	20	74
100(4")	70	164	90	22	91	2.76	6.45	3.54	0.87	3.60	70	164	90	22	91
125(5")	92	196	109	22	98	3.64	7.72	4.28	0.87	3.77	92	196	109	22	98
150(6")	112	220	132	26	147	4.40	8.86	5.19	1.02	5.80	112	220	132	26	147
200(8")	150	275	176	35	191	5.90	10.82	6.93	1.38	7.50	150	275	176	35	191
250(10")	190	330	222	40	229	7.48	12.99	8.74	1.57	9.00	190	330	222	40	229
300(12")	216	380	260	45	259	8.62	14.96	10.23	1.77	10.20	216	380	260	45	259
350(14")	266	440	300	49	245	10.47	17.32	11.81	1.93	9.64	266	440	300	49	245
400(16")	310	491	340	65	285	12.20	19.33	13.38	2.56	11.22	310	491	340	65	285
450(18")	350	541	390	68	330	13.78	21.30	15.35	2.87	13.00	350	541	390	68	330
500(20")	400	598	440	78	385	15.75	23.48	17.32	3.07	15.15	400	598	440	78	385
600(24")	450	700	490	85	430	17.72	27.55	19.29	3.34	16.92	450	700	490	85	430

## TRUE UNION BALL CHECK VALVE (VERTICAL TYPE)

由任式球形逆止凡而(直式)

SOCKET JX110/THREAD JX200/BUTT JX300  
SIZE: 1/2"-4"



### MATERIALS OF CONSTRUCTION

No.	Parts	Pcs	Materials	No.	Parts	Pcs	Materials
1	Body	1	UPVC, PP, CPVC, PVDF	5	Seat	1	EPDM, VITON
2	Ball	1	UPVC, CPVC, PVDF, PPG	6	Union Nut	2	UPVC, PP, CPVC, PVDF
3	Seat Carrier	1	UPVC, PP, CPVC, PVDF	7	O'ring	1	EPDM, VITON
4	End Connector	2	UPVC, PP, CPVC, PVDF	8	Seat Carrier O-Ring	65A-100A	EPDM, VITON

### DIMENSIONS TABLE

Nom, Size	DIN						Units: mm
	D1	d		L		B	
		Socket	Thread	Socket Thread	Butt welding		
OD20 (1/2")	15	20	R1/2	101	158.5	53.5	
OD25 (3/4")	19.5	25	R3/4	115	164	63.3	
OD32 (1")	25	32	R1	156	172	73	
OD40 (1-1/4")	32	40	R1-1/4	171	191	97.5	
OD50 (1-1/2")	40	50	R1-1/2	171	187.5	97.5	
OD63 (2")	50	63	R2	195	208	120.5	
OD75 (2-1/2")	62.5	75	R2-1/2	228	212.5	150	
OD90 (3")	76	90	R3	274	308	184	
OD110 (4")	100	110	R4	367	377	198	

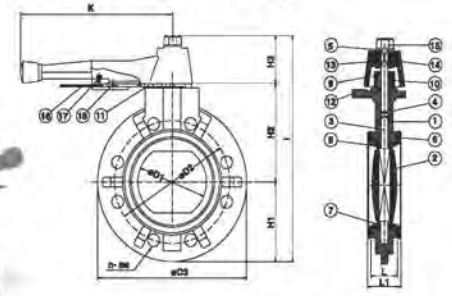


# PVDF/PVDF(FRP COATED) PIPE FITTING VALVE



# PVDF/PVDF(FRP COATED) PIPE FITTING VALVE

## BUTTERFLY VALVE Lever handle type 旋轉凡而(手把式)



DN50-DN200

**BB300**  
Size: 2"- 8"  
options: 8"(DN200) GEAR OPERATOR TYPE

### TORQUE VALUES (1kgf/m=9.8N.m)

BF-VS Size	Torque Under Without Any Water Pressure (kgfcm)		Under Water Testing Pressure(Kg/cm <sup>2</sup> )			BF-VS Size	Torque Under Without Any Water Pressure (kgfcm)		Under Water Testing Pressure(Kg/cm <sup>2</sup> )		
	Min	Max	Min	Max	Avg		Min	Max	Min	Max	Avg
2"	1.5	15	0.5	0.5	10"	17.0	8	7	10		
2-1/2"	1.5	15	0.5	0.5	12"	27.0	8	14	18		
3"	2.0	15	1	1.5	14"	37.0	6	20	28		
4"	2.0	12	1	1.5	16"	42.0					
5"	5.0	12	2.5	4.5	18"	52.0					
6"	6.5	12	4	7	20"	65.0					
8"	10.0	10	6	6.5	24"	76.0					

### MATERIALS OF CONSTRUCTION

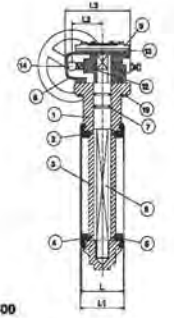
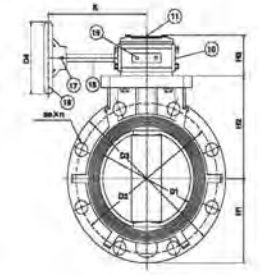
No.	Parts	Pcs.	Materials	No.	Parts	Pcs.	Materials
1	Body	1	UPVC, PP, PPG, PVDF, CPVC	10	Retainer Cap	1	UPVC, PP, PVDF
2	Disc	1	UPVC, PP, PPG, PVDF, CPVC	11	Positioner	1	SUS304
3	Stem	1	SUS410, SUS316, SUS304	12	Screw	2-502020	SUS304
4	Stem O-ring	2	EPDM, VITON	13	Handle	1	ABS
5	Waisher	1	SUS304	14	Inserted Metal Of Handle	1	FC0208
6	Seat	1	EPDM, VITON, NBR, HYPALON	15	Nut	1	PVC COATED BRASS, SUS304
7	Disc O'ring(1)	2	EPDM, VITON	16	Handle Lever	1	SUS304
8	Disc O'ring(2)	2	EPDM, VITON	17	Spring	1	SUS304
9	Stem Retainer	1	SUS304	18	Set Pin	1	BSSM

### DIMENSIONS TABLE

Nom. Size DN(Inch)	DIN													Unit: mm	
	D1	D2	D3	øe	n	L	L1	H1	H2	H3	I	K	Test Press (kgf/cm <sup>2</sup> ) Body	Working Press (kgf/cm <sup>2</sup> ) Seat	
50(2")	57	125	160	18	4	35	42	83	102	66	253	220	15.0	12.0	10.0
65(2 1/2")	72	145	184	18	4	37	46	92	110	66	270	220	15.0	12.0	10.0
80(3")	80	160	200	18	8	37	46	100	118	66	286	220	15.0	12.0	10.0
100(4")	100	180	230	18	8	47	56	115	134	66	312	230	15.0	12.0	10.0
125(5")	130	210	250	18	8	57	66	127	160	96	391	310	15.0	12.0	10.0
150(6")	150	240	290	23	8	62	71	145	177	96	418	310	15.0	12.0	10.0
200(8")	203	295	337	23	8	76	87	188	204	93	476	414	15.0	12.0	10.0

\* Standard dimensions based on PVC material

## BUTTERFLY VALVE GEAR OPERATOR FULL FLANGED TYPE 旋轉凡而全法蘭齒輪式



**BF300**  
Size: 8"- 24"  
\*OPTION: 8"(DN200) Lever type.

### Torque Values (1kgf/m=9.8N.m)

BF-VS Size	Torque Under Without Any Water Pressure (kgfcm)		Under Water Testing Pressure(Kg/cm <sup>2</sup> )			BF-VS Size	Torque Under Without Any Water Pressure (kgfcm)		Under Water Testing Pressure(Kg/cm <sup>2</sup> )		
	Min	Max	Min	Max	Avg		Min	Max	Min	Max	Avg
2"	1.5	15	0.5	0.5	12"	27.0	8	14	18		
2-1/2"	1.5	15	0.5	0.5	14"	37.0	8	25	28		
3"	2.0	15	1	1.5	16"	42.0					
4"	2.0	12	1	1.5	18"	52.0					
5"	5.0	12	2.5	4.5	20"	65.0					
6"	6.5	12	4	7	24"	76.0					
8"	10.0	10	6	6.5	28"						
10"	17.0	8	7	10							

### MATERIALS OF CONSTRUCTION

No.	Parts	Pcs.	Materials	No.	Parts	Pcs.	Materials
1	Body	1	UPVC, PP, CPVC, PPG, PVDF	11	Inicator Plate	1	PVC
2	Seat	1	EPDM, VITON, NBR, HYPALON	12	Gear	1	FC045
3	Disc	1	UPVC, PP, CPVC, PPG, PVDF	13	Oil Seal	1	EPDM
4	Disc O'ring(A)	2	EPDM, VITON	14	Bearing	1	SMCM220/420/R10
5	Disc O'ring(B)	2	EPDM, VITON	15	Adjustable Bolt	2	SS41
6	Stem	1	SUS410, SUS304, SUS316	16	Gearing	1	SS41
7	Stem O'ring	2	EPDM, VITON	17	Set Pin	1	K7
8	Gear Box	1	FC25	18	Hand Wheel	1	FC25
9	Gear Box Cap	1	FC25	19	Tightening Bolt	4	SSM3, SUS304
10	Side Cap	1	FC25				

### DIMENSIONS TABLE

Nom. Size DN(Inch)	DIN													Unit: mm			
	D1	D2	n	øe	D3	L	L1	H1	H2	H3	K	L2	L3	D4	Test Press (kgf/cm <sup>2</sup> ) Body	Working Press (kgf/cm <sup>2</sup> ) Seat	
200(8")	203	295	8	23	337	76	87	168	204	89	178	51	136	143	15.0	12.0	10.0
250(10")	255	350	12	25	400	96	111	200	235	69	178	51	136	143	15.0	12.0	10.0
300(12")	312	400	12	25	483	116	132	239	289	103	212	72	189	244	10.5	8.5	7.0
350(14")	355	460	16	25	520	116	132	259	305	103	212	72	189	244	10.5	8.5	7.0
400(16")	398	515	16	27	600	153	159	302	363	103	212	72	189	244	8.0	7.0	6.0
450(18")	451	565	20	27	640	168	181	317	365	121	269	116	285	484	7.5	6.0	5.0
500(20")	500	620	20	27	711	171	190	385	405	121	330	116	285	464	5.0	4.0	3.5
600(24")	600	725	20	30	813	191	209	425	460	121	330	116	285	464	5.0	4.0	3.5

\* Standard dimensions based on PVC material





# PVDF/PVDF(FRP COATED) PIPE FITTING VALVE



# PVDF/PVDF(FRP COATED) PIPE FITTING VALVE

## 原料物性表

### MATERIAL SPECIFIC PHYSICAL PROPERTIES

Property	Test	Unit	PVDF	
Density	DIN 53479	g/cm <sup>3</sup>	1.78	
	ASTMD 792 ISO1183	lb/ft <sup>3</sup>	111.1	
MFG	ISO1133	g/10min		
	230/5		6-24	
Tensile stress at yield	ISO527 ASTMD 638	N/mm <sup>2</sup> psi	>53 >7687	
Elongation at yield	ISO/R 527	%	>5	
Ultimate strength	ISO/R 527 ASTMD 638	N/mm <sup>2</sup> psi	>35 >5076	
Elongation at break	ISO/R 527 ASTMD 638	%	30	
E-modulus (tensile test)	ISO/R 527 ASTMD 638	N/mm <sup>2</sup> psi	2500 362594	
E-modulus (bending test)	ISO178 ASTMD 790	N/mm <sup>2</sup> psi	2100 304579	
Impact strength notched acc. IZOD	ISO180 ASTMD 256	J/m	>55	
Shore D-hardness	DIN 53505 ASTMD 2240	-	78	
Abrasion resistance	DIN 53754	mg/100 cycles	0.5-1	
Friction coefficient : Static dynamic	ASTMD 1894		0.2- 0.4 0.2- 0.3	
Thermal properties	Cristality melting Point	DIN 53736 ASTMD 3418	°C °F	174 345
	Vicat softening Temperature VST-AV50	ISO306 DIN 53460	°C	170
	Deflection temperature (HDT) Method A (1.82 MPa) Method B (0.46 MPa)	DIN 53461 ISO75 ASTMD 648	°C	113 147
	Linear expansion coefficient	DIN 53453 ASTMD 696	1/k	1.3*10 <sup>-4</sup>
	Thermal conductivity 20°C - 150°C	DIN 52612 TMA ASTMD 177	W/mK BTU-in hr-f t-F	0.19 1.29
Electrical properties	Specific volume resistivity	DIN 53483	OHMcM	>10 <sup>14</sup>
	Surface resistivity	ASTMD 257	Ohm	>10 <sup>14</sup>
Dielectric strength	DIN 53481 ASTMD 149	KVmm	-40	
Physiologically non-toxic			Yes	
Burning rate	UL 94 DIN 4102	-	V0 B1	
UV-resistance		-	resistant	
Color		RAL	natural	

## Non-contact heating element butt welding :IR-Infrared welding (不接觸電熱片的遠紅外線面對面焊接)

### ◎Non-contact heating element butt welding IR-infrared welding technique (acc. to DVS 2207 Part 6) 非接觸加熱元件面對面焊接(遠紅外線焊接技巧) (acc. to DVS 2207 Part 6)

This method is the next evolution of heating element butt fusion, where the components are not in contact with heat source. The heating of pipe ends is performed by radiant heat. The advantage of the non-contact butt welding is the minimal bead sizes and the elimination of possible contamination from the heating element. The shape of the bead is also straighter internally creating less of an area for bacteria growth. Compared to conventional heating element butt welding, the IR-total welding times are reduced by up to 70% with an increase of the welding factor resp. welding quality.

本焊接方式為加熱元件面對面焊接技術之演進，其致接合之物件與加熱元件並無互相接觸。電子端點之加熱是由熱輻射作業，非接觸面對面焊接的好處為氣泡尺寸最小化與消除加熱元件可能產生之污損。氣泡的形狀所產生的雜音與壓力降低相當多，相較於接觸面對面焊接，遠紅外線焊接所需之總焊接時間大幅減少70%，進而增進焊接之品質。

All welding parameters are recorded by the computer. All steps are controlled and sequential. Simplified handling together with a 100% comprehensive welding system and complete traceability of the process are the unique and important features of the SP Series. The joining pressure is electronically regulated according to the pre-programmed data. Any deviations will be immediately recorded and indicated on the Touch-Panel/printout-label.

### ◎Welding method (焊接方式)

The welding faces of the parts to be joined are heated-up in a pressureless condition (no alignment). After removing the heating element (change over) the parts are joined together under specific time and pressure (build-up) and let cool down under the required pressure.

欲接合元件的焊接面是在沒有壓力的狀況下被加熱，加熱元件移開後，將欲接合元件在特定的時間與壓力下接著在一起，而後在給定的壓力下使其自然冷卻。

### ◎Preparations before welding (焊接作業前的準備)

Ensure sufficient power supply and place the welding machine in a dry, safety and clean workshop (cleanroom) according manufacturer's recommendation.

依據焊接機製造商所建議的，將焊接機置於乾燥、安全、且乾淨的工作地點(或無塵室)，並確保其電源供應充足無虞。

The nominal wall thickness of the parts to be welded must correspond to the effective joining area and welding parameters.

欲接合元件的標稱管壁厚度必須符合有效的接合區域規範與焊接的參數設定。

If necessary, clean the heating element with clean, fluffless paper before starting of each welding process. The non-stick coating of the heating element must be undamaged in the working area.

若有必要，再每次焊接作業執行前以乾淨且無毛絮的紙張清理加熱元件，而加熱元件上黏黏性的外包覆層工作區域則應保持無損。

The heating element is heated-up to the set temperature automatically. At the desired temperature, the countdown of the remaining time start. It is important, that the heating element is at temperature at the effective welding surface area.

加熱元件自動加熱到設定溫度，開始倒數焊接，加熱元件在有效焊接表面維持一樣溫度。

The welding surfaces can be cleaned with cleaning agent, e.g. alcohol, prior to planing. After planing, the virgin material is given and any liquid cleaning is not permitted. Use special cleanroom paper or a soft brush to remove any shavings. It is also recommended to use a vacuum cleaner to clean the welding machine.

在計劃作業前可清潔焊接表面可以用清潔劑如酒精等，計劃作業後，對原始物件不可以使用任何液體清潔，使用無塵室專用紙或軟刷去除任何毛邊，也建議用真空清潔機清潔焊接設備。

The disalignment of the joining faces to one another should not exceed the permissible figure of 0,1 x wall thickness.

焊接表面水平誤差不可以超過0.1x壁厚

### ◎Recommended welding machines: (建議的焊接設備)

AGRU SP-Series IR-welding equipment  
AGRU SP 系列 IR 焊接設備

This new developed welding equipment operates fully automatic and can be used for different materials such as PP-Pure, Polypure, PVDF UHP, ECTFE and PureBond PFA as manufactured by Entegris Inc.

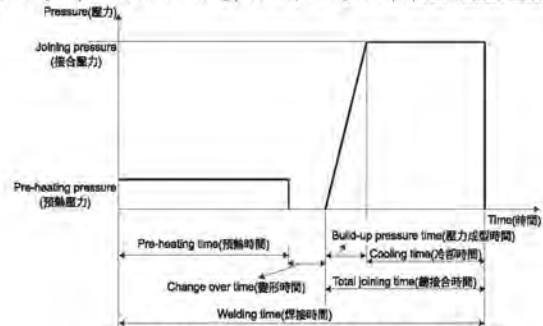
這是新開發的全自動焊接設備可使用在不同材質：PP-pure polyure, PVDF UHP, ECTFE, PureBond PFA 由 Entegris Inc. 所生產。



# PVDF/PVDF(FRP COATED) PIPE FITTING VALVE

## IR FUSION WELDING (遠紅外線焊接)

◎The gradually sequences of the welding process (welding curve): (焊接作業之漸進程序(焊接曲線))



※ Welding curve of a non-contact heating element butt welding (IR-fusion)

## ◎Welding parameters (焊接參數)

The welding parameters like pre-heating time, change over time, build-up pressure time, joining and cooling time are preset and can not be altered by the operator. By setting the material, pressure range and size of pipe the machine recognizes automatically the welding parameter. Following table indicates the total welding times in seconds.  
預熱時間、變形時間、壓力成型時間、接合與冷卻時間等焊接參數皆可預先調整，且設定不為操作元件改變，藉由設定管子材質、壓力範圍、與尺寸大小後，焊接機將自動辨識焊接元件，並而取用適用之焊接參數，下表指出各尺寸管材焊接程序各階段所需之時間。

Dimension	SP 110				SP 250 (SP 280)				KWH355-630	
	PP-Pure Polypure	PVDF UHP	PP-Pure Polypure	PVDF UHP	PP	PVDF	PP	PVDF	PP	PVDF
	SDR11	SDR17	SDR21	SDR33	SDR11	SDR17	SDR21	SDR33	SDR11	SDR21
20	127	-	90	-	-	-	-	-	-	-
25	134	-	90	-	-	-	-	-	-	-
32	147	-	101	-	-	-	-	-	-	-
40	178	-	136	-	-	-	-	-	-	-
50	206	194	148	-	-	-	-	-	-	-
63	240	228	148	144	-	-	-	-	-	-
75	235	242	157	136	413	330	214	214	-	-
90	321	288	185	167	488	361	232	229	922	433
110	316	282	188	179	524	470	250	244	1102	518
125	-	-	-	-	576	395	264	255	1282	564
140	-	-	-	-	605	524	288	240	1396	614
160	-	-	-	-	633	585	299	279	1456	640
180	-	-	-	-	669	599	356	317	1576	740
200	-	-	-	-	712	625	378	373	1696	882
225	-	-	-	-	750	753	404	396	1891	1002
250	-	-	-	-	795	740	451	415	2011	1046
280	-	-	-	-	-	-	486	486	2131	1108
315	-	-	-	-	-	-	-	-	2206	1147
355	-	-	-	-	-	-	-	-	3286	1709
400	-	-	-	-	-	-	-	-	3466	1806
450	-	-	-	-	-	-	-	-	4005	2083
500	-	-	-	-	-	-	-	-	4305	2239
560	-	-	-	-	-	-	-	-	4445	2311
630	-	-	-	-	-	-	-	-	4565	2374

※ Welding times for IR-fusion (SP Type) 遠紅外線焊接時間分布表 (SP Type)

As we are constantly endeavour to improve our welding system and parameter, changes without notice are possible.

※ 本表數據僅為參考用，請依實際施工環境條件設備做調整。

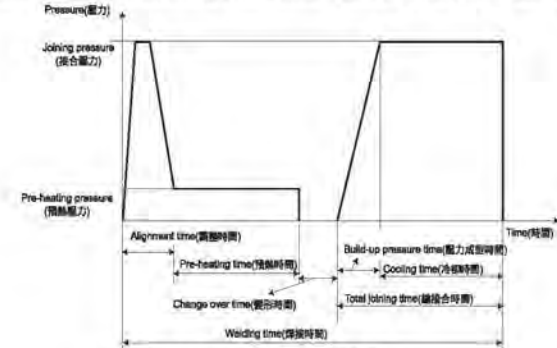
The above date is only for reference, please follow up the working conditions and equipment to do the necessary adjustment.



# PVDF/PVDF(FRP COATED) PIPE FITTING VALVE

## ◎BUTT Welding (面對面焊接)

◎The gradually sequences of the welding process (welding curve): (焊接作業之漸進程序(焊接曲線))



※ Welding curve of butt welding (面對面焊接曲線)

## ◎Welding parameters (焊接參數)

Reference values for heating element butt welding of PVDF pipes and fittings at outside temperatures of about 20°C and low air-speed rates (acc. DVS Z207 Part 15) (PVDF管、配件面對面焊接參考數據為室溫約在20°C；低風速條件下。)(根據DVS Z207 Part15)

Material	Wall thickness (mm) 壁厚	Alignment Bead height min.(mm) 調整時 焊接最小高度	Pre-heating time (sec) 秒 預熱時間	Adjusting time max.(sec) 秒 最大調整時間	Build-up pressure time (sec) 秒 壓力成型時間	Cooling time min. (min) 最小冷卻時間
Spec. welding pressure	—	0.10N/mm <sup>2</sup>	0.01N/mm <sup>2</sup>	—	0.10N/mm <sup>2</sup>	
PVDF	1.9-3.5	0.5	59-75	3	3-4	5.0-6.0
	3.5-5.5	0.5	75-95	3	4-5	6.0-8.5
	5.5-10.0	0.5-1.0	95-140	4	4-7	8.5-14.0
	10.0-15.0	1.0-1.3	140-190	4	7-9	14.0-19.0
	15.0-20.0	1.3-1.7	190-240	5	9-11	18.0-25.0
	20.0-25.0	1.7-2.0	240-290	5	11-13	25.0-32.0
	25.0-30.0	2.5-3.0	290-00	7	13-16	32-45

※ Welding parameters of butt welding





# PVDF/PVDF(FRP COATED) PIPE FITTING VALVE



# PVDF/PVDF(FRP COATED) PIPE FITTING VALVE

## Heating element socket welding (插管套接操作)

### Welding method (套接方法)

On heating element socket welding, pipe and fittings are lap-welded. The pipe end and fitting socket are heated up to welding temperature by means of a socket-like or a spigot-like heating element and afterwards, they are joined.

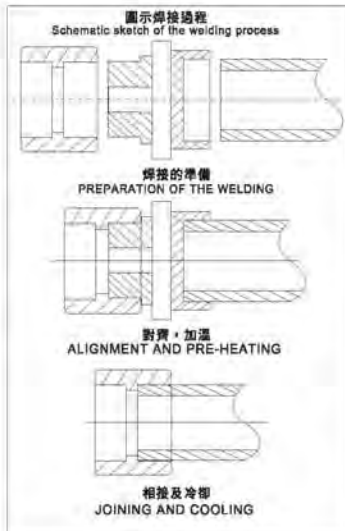
在熱插套焊中，管子和配件是交疊式焊接，管端和配件插口用內套及外套電熱板加熱到焊接溫度使管子和配件相焊接。

The dimensions of pipe end, heating element and fitting socket are coordinated so that a joining pressure builds up on joining (see schematic sketch).

管端尺寸、電熱板和配件插口是互相同等的，所以焊接壓力在焊接時建立起來(參看草圖)。

Heating element socket weldings may be manually performed up to pipe outside diameters of 40mm. Above that, use a welding device because of increasing joining forces.

熱插套焊可以用手動式操作到管子外徑40mm，以上尺寸使用焊接工具來增加焊接力量。



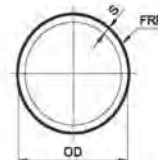
Pre-heating time AW  
(sec)  
PN6

### Welding parameters(套接係數)

Pipe outside diameter (管外徑) (mm)	Wall thickness (壁厚) (mm)	Preheating time (預熱時間) (sec)秒	Maxi mum Adjusting time (最大調整時間) (sec)秒	Cooling time (冷卻時間) (min)
20	1/2"	1.9	3	3
25	3/4"	1.9	4	3
32	1"	2.4	5	3
40	1 1/4"	2.4	6	4
50	1 1/2"	3.0	8	5
63	2"	2.5	7	6
63	2"	3.0	10	6
75	2 1/2"	2.5	7	6
75	2 1/2"	3.6	12	6
90	3"	2.8	8	6
90	3"	4.3	15	8
110	4"	3.4	12	10
110	4"	5.3	20	10

## PVDF(FRP COATED) PIPE

Liner, PN10, PN16, PN20  
for butt welding



## 直管 PVDF (FRP COATED) PIPE DFP PIO

OD (mm)	LINER		S5 FRP (mm)	A (mm)	SDR33 ISO S16 PN10			SDR21 ISO S10 PN16			SDR17 ISO S8 PN 20		
	S (mm)	Weight (Kg/m)			Code	S (mm)	Weight (Kg/m)	Code	S (mm)	Weight (Kg/m)	Code	S (mm)	Weight (Kg/m)
16	-	-	2	20	-	-	-	-	-	-	53-PIO-17-0016	1.5	0.14
20	-	-	2	25	-	-	-	53-PIO-21-0020	1.9	0.21	53-PIO-17-0020	1.9	0.21
25	-	-	2	30	-	-	-	53-PIO-21-0025	1.9	0.27	53-PIO-17-0025	1.9	0.27
32	2.4	0.44	2	35	-	-	-	53-PIO-21-0032	2.4	0.44	53-PIO-17-0032	2.4	0.44
40	2.4	0.55	2	35	-	-	-	53-PIO-21-0040	2.4	0.55	53-PIO-17-0040	2.4	0.55
50	2.5	0.73	2	35	-	-	-	53-PIO-21-0050	3.0	0.85	53-PIO-17-0050	3.0	0.85
63	2.5	0.93	3	35	53-PIO-33-0063	2.0	0.72	53-PIO-21-0063	3.0	1.09	53-PIO-17-0063	3.8	1.29
75	2.5	1.11	3	40	53-PIO-33-0075	2.3	1.03	53-PIO-21-0075	3.6	1.55	53-PIO-17-0075	4.5	1.83
90	2.8	1.48	3	40	53-PIO-33-0090	2.8	1.48	53-PIO-21-0090	4.3	2.22	53-PIO-17-0090	5.4	2.60
110	3.0	1.94	3	40	53-PIO-33-0110	3.4	2.20	53-PIO-21-0110	5.3	3.32	53-PIO-17-0110	6.6	3.90
125	3.0	2.21	3	45	53-PIO-33-0125	3.9	2.84	53-PIO-21-0125	6.0	4.24	-	-	-
140	3.0	2.49	3	50	53-PIO-33-0140	4.3	3.52	53-PIO-21-0140	6.7	5.31	-	-	-
160	3.0	2.85	3	55	53-PIO-33-0160	4.9	4.54	53-PIO-21-0160	7.7	6.89	-	-	-
180	3.0	3.21	3	55	53-PIO-33-0180	5.5	5.74	53-PIO-21-0180	8.6	8.74	-	-	-
200	3.0	3.65	3	60	53-PIO-33-0200	6.2	7.19	53-PIO-21-0200	9.6	10.83	-	-	-
225	3.0	4.03	3	70	53-PIO-33-0225	6.9	8.95	53-PIO-21-0225	10.8	13.67	-	-	-
250	3.0	4.48	5	70	53-PIO-33-0250	7.7	11.09	53-PIO-21-0250	11.9	16.73	-	-	-
280	3.5	5.87	5	80	53-PIO-33-0280	8.6	13.86	53-PIO-21-0280	13.4	21.11	-	-	-
315	4.0	7.47	5	90	53-PIO-33-0315	9.7	17.55	53-PIO-21-0315	15.0	26.51	-	-	-
355	4.0	8.43	5	100	53-PIO-33-0355	10.9	22.00	-	-	-	-	-	-
400	5.0	11.81	5	110	53-PIO-33-0400	12.3	28.03	-	-	-	-	-	-
450	5.0	13.30	5	120	53-PIO-33-0450	13.7	35.31	-	-	-	-	-	-
500	-	-	8	140	53-PIO-33-0500	15.2	48.0	-	-	-	-	-	-
560	-	-	8	150	53-PIO-33-0560	17.0	62.0	-	-	-	-	-	-
630	-	-	8	170	53-PIO-33-0630	19.1	73.0	-	-	-	-	-	-





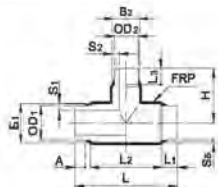


# PVDF/PVDF(FRP COATED) PIPE FITTING VALVE

## PVDF(FRP COATED) REDUCED TEE

molded from PVDF  
for butt welding

對接異徑三通 PVDF 披覆 FRP  
DFP TR1



OD1/OD2 (mm)	H (mm)	L (mm)	L1 (mm)	L2 (mm)	L3 (mm)	B1 (mm)	B2 (mm)	S5 FRP (mm)	A (mm)	SDR33 ISO S16 PN10		SDR21 ISO S10 PN16	
										Code	S (mm)	Code	S (mm)
△ 200-83	157	273	35	203	26	208	85.0	3	60	53-TR1-33-200083	8.2/2.0	53-TR1-21-200083	9.8/3.0
△ 200-90	157	273	35	203	26	208	93.5	3	60	53-TR1-33-200090	8.2/2.8	53-TR1-21-200090	9.8/4.3
200-110	157	273	35	203	30	208	114.0	3	60	53-TR1-33-200110	8.2/3.4	53-TR1-21-200110	9.8/5.3
200-125	157	273	35	203	35	208	130.0	3	60	53-TR1-33-200125	8.2/3.9	53-TR1-21-200125	9.8/6.0
200-140	157	273	35	203	35	208	148.0	3	60	53-TR1-33-200140	8.2/4.3	53-TR1-21-200140	9.8/6.7
200-160	157	273	35	203	35	208	167.0	3	60	53-TR1-33-200160	8.2/4.9	53-TR1-21-200160	9.8/7.7
△ 200-180	157	273	-	-	-	-	-	3	70	53-TR1-33-200180	8.2/5.5	53-TR1-21-200180	9.8/8.6
△ 225-75	171.5	306	40	228	26	235	78.8	3	70	53-TR1-33-225075	8.9/2.3	53-TR1-21-225075	10.8/3.6
△ 225-90	171.5	306	40	228	26	235	93.5	3	70	53-TR1-33-225090	8.9/2.8	53-TR1-21-225090	10.8/4.3
△ 225-110	171.5	306	40	228	30	235	114.0	3	70	53-TR1-33-225110	8.9/3.4	53-TR1-21-225110	10.8/5.3
225-125	171.5	306	40	228	35	235	130.0	3	70	53-TR1-33-225125	8.9/3.9	53-TR1-21-225125	10.8/6.0
△ 225-140	171.5	306	-	-	-	-	-	3	70	53-TR1-33-225140	8.9/4.3	53-TR1-21-225140	10.8/6.7
225-160	171.5	306	40	228	35	235	167.0	3	70	53-TR1-33-225160	8.9/4.9	53-TR1-21-225160	10.8/7.7
225-180	171.5	306	40	228	35	235	188.0	3	70	53-TR1-33-225180	8.9/5.5	53-TR1-21-225180	10.8/8.6
△ 225-200	171.5	306	-	-	-	-	-	3	70	53-TR1-33-225200	8.9/6.2	53-TR1-21-225200	10.8/9.6
△ 250-110	188	325	45	235	30	260	114.0	5	70	53-TR1-33-250110	7.7/3.4	53-TR1-21-250110	11.9/5.3
△ 250-125	188	325	-	-	-	-	-	5	70	53-TR1-33-250125	7.7/3.9	53-TR1-21-250125	11.9/6.0
△ 250-140	188	325	45	235	35	260	148.0	5	70	53-TR1-33-250140	7.7/4.3	53-TR1-21-250140	11.9/6.7
250-160	188	325	45	235	35	260	167.0	5	70	53-TR1-33-250160	7.7/4.9	53-TR1-21-250160	11.9/7.7
△ 250-180	188	325	-	-	-	-	-	5	70	53-TR1-33-250180	7.7/5.5	53-TR1-21-250180	11.9/8.6
250-200	188	325	45	235	35	260	208.0	5	70	53-TR1-33-250200	7.7/6.2	53-TR1-21-250200	11.9/9.6
250-225	188	325	45	235	40	260	235.0	5	70	53-TR1-33-250225	7.7/6.8	53-TR1-21-250225	11.9/10.8
* 280-140	250	480	-	-	-	-	-	5	80	53-TR1-33-280140	8.6/4.3	53-TR1-21-280140	13.4/6.7
* 280-160	250	480	-	-	-	-	-	5	80	53-TR1-33-280160	8.6/4.9	53-TR1-21-280160	13.4/7.7
* 280-180	250	480	-	-	-	-	-	5	80	53-TR1-33-280180	8.6/5.5	53-TR1-21-280180	13.4/8.6
* 280-200	270	550	-	-	-	-	-	5	80	53-TR1-33-280200	8.6/6.2	53-TR1-21-280200	13.4/9.6
* 280-225	270	550	-	-	-	-	-	5	80	53-TR1-33-280225	8.6/6.8	53-TR1-21-280225	13.4/10.8
* 280-250	270	550	-	-	-	-	-	5	80	53-TR1-33-280250	8.6/7.7	53-TR1-21-280250	13.4/11.9
* 315-160	278	520	-	-	-	-	-	5	80	53-TR1-33-315160	9.7/4.9	53-TR1-21-315160	15.0/7.7
* 315-180	278	520	-	-	-	-	-	5	80	53-TR1-33-315180	9.7/5.5	53-TR1-21-315180	15.0/8.6
* 315-200	278	520	-	-	-	-	-	5	80	53-TR1-33-315200	9.7/6.2	53-TR1-21-315200	15.0/9.6
* 315-225	307	600	-	-	-	-	-	5	80	53-TR1-33-315225	9.7/6.8	53-TR1-21-315225	15.0/10.8
* 315-250	307	600	-	-	-	-	-	5	80	53-TR1-33-315250	9.7/7.7	53-TR1-21-315250	15.0/11.9
* 315-280	307	600	-	-	-	-	-	5	80	53-TR1-33-315280	9.7/8.6	53-TR1-21-315280	15.0/13.4

△ 轉接品 (Transition) \* 手工製品 (Fabricated)

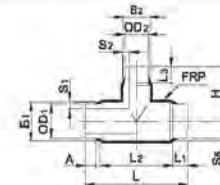


# PVDF/PVDF(FRP COATED) PIPE FITTING VALVE

## PVDF(FRP COATED) REDUCED TEE

molded from PVDF  
for butt welding

手工對接異徑三通 PVDF 披覆 FRP  
DFP TR3



OD1/OD2 (mm)	H (mm)	L (mm)	S5 FRP (mm)	A (mm)	SDR33 ISO S16 PN10	
					Code	S (mm)
355-180	297	585	5	100	53-TR3-33-355180	10.9/5.5
355-200	297	585	5	100	53-TR3-33-355200	10.9/6.2
355-225	297	585	5	100	53-TR3-33-355225	10.9/6.9
355-250	337	675	5	100	53-TR3-33-355250	10.9/7.7
355-280	337	675	5	100	53-TR3-33-355280	10.9/8.6
355-315	337	675	5	100	53-TR3-33-355315	10.9/9.6
400-200	330	670	5	110	53-TR3-33-400200	12.3/6.2
400-225	330	670	5	110	53-TR3-33-400225	12.3/6.9
400-250	330	670	5	110	53-TR3-33-400250	12.3/7.7
400-280	380	775	5	110	53-TR3-33-400280	12.3/8.6
400-315	380	775	5	110	53-TR3-33-400315	12.3/9.7
400-355	380	775	5	110	53-TR3-33-400355	12.3/10.9
450-225	375	780	5	120	53-TR3-33-450225	13.7/6.9
450-250	375	780	5	120	53-TR3-33-450250	13.7/7.7
450-280	375	780	5	120	53-TR3-33-450280	13.7/8.6
450-315	435	900	5	120	53-TR3-33-450315	13.7/9.7
450-355	435	900	5	120	53-TR3-33-450355	13.7/10.9
450-400	435	900	5	120	53-TR3-33-450400	13.7/12.3
500-250	410	875	8	140	53-TR3-33-500250	15.2/7.7
500-280	410	875	8	140	53-TR3-33-500280	15.2/8.6
500-315	410	875	8	140	53-TR3-33-500315	15.2/9.7
500-355	500	1010	8	140	53-TR3-33-500355	15.2/10.9
500-400	500	1010	8	140	53-TR3-33-500400	15.2/12.3
500-450	500	1010	8	140	53-TR3-33-500450	15.2/13.7
560-280	480	955	8	150	53-TR3-33-560280	17.0/8.6
560-315	480	955	8	150	53-TR3-33-560315	17.0/9.7
560-355	480	955	8	150	53-TR3-33-560355	17.0/10.9
560-400	580	1100	8	150	53-TR3-33-560400	17.0/12.3
560-450	580	1100	8	150	53-TR3-33-560450	17.0/13.7
560-500	580	1100	8	150	53-TR3-33-560500	17.0/15.2
630-315	525	1100	8	170	53-TR3-33-630315	19.1/8.6
630-355	525	1100	8	170	53-TR3-33-630355	19.1/9.6
630-400	525	1100	8	170	53-TR3-33-630400	19.1/10.9
630-450	615	1260	8	170	53-TR3-33-630450	19.1/13.7
630-500	615	1260	8	170	53-TR3-33-630500	19.1/15.2
630-560	615	1260	8	170	53-TR3-33-630560	19.1/17.0

手工製品 (Fabricated)



# PVDF(PVDF(FRP COATED)) PIPE FITTING VALVE



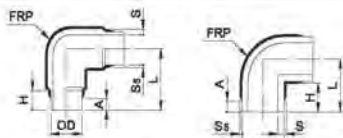
# PVDF(PVDF(FRP COATED)) PIPE FITTING VALVE

## PVDF(FRP COATED) 90° BEND

for butt welding  
molded from PVDF

對接90°彎頭 PVDF 披覆 FRP

DFP L91



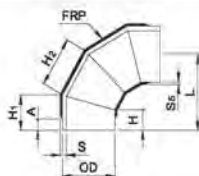
(ø20~ø110, 140, 180, 225, 280) (ø125, 180, 200, 250, 315)

OD (mm)	H (mm)	L (mm)	S5 FRP (mm)	A (mm)	SDR33 ISO S16 PN10		SDR21 ISO S10 PN16	
					Code	S (mm)	Code	S (mm)
20	25	45.0	2	25	-	-	53-L91-21-0020	1.9
25	28	51.0	2	30	-	-	53-L91-21-0025	1.9
32	28	58.0	2	35	-	-	53-L91-21-0032	2.4
40	28	68.0	2	35	-	-	53-L91-21-0040	2.4
50	28	78.0	2	35	-	-	53-L91-21-0050	3.0
63	28	91.0	3	35	53-L91-33-0063	2.0	53-L91-21-0063	3.0
75	28	103.0	3	40	53-L91-33-0075	2.3	53-L91-21-0075	3.6
90	28	118.0	3	40	53-L91-33-0090	2.8	53-L91-21-0090	4.3
110	28	138.0	3	40	53-L91-33-0110	3.4	53-L91-21-0110	5.3
125	35	97.5	3	45	53-L91-33-0125	3.9	53-L91-21-0125	6.0
140	35	130.0	3	50	53-L91-33-0140	4.3	53-L91-21-0140	6.7
160	35	133.0	3	55	53-L91-33-0160	4.9	53-L91-21-0160	7.7
180	46	136.0	3	55	53-L91-33-0180	5.5	53-L91-21-0180	8.8
200	36	138.0	3	60	53-L91-33-0200	6.2	53-L91-21-0200	9.6
225	40	180.0	3	70	53-L91-33-0225	6.9	53-L91-21-0225	10.8
250	45	299.5	5	70	53-L91-33-0250	7.7	53-L91-21-0250	11.9
280	90	230.0	5	80	53-L91-33-0280	8.6	53-L91-21-0280	13.4
315	90	247.5	5	90	53-L91-33-0315	9.7	53-L91-21-0315	15.0

## PVDF(FRP COATED) 90° ELBOW

molded from PVDF  
(Fabricated)

手工對接90°彎頭 PVDF 披覆 FRP  
DFP L94



OD (mm)	H (mm)	H1 (mm)	H2 (mm)	L (mm)	S5 FRP (mm)	A (mm)	SDR33 ISO S16 PN10		SDR21 ISO S10 PN16	
							Code	S (mm)	Code	S (mm)
355	160	255	350	589	5	100	53-L94-33-0315	10.9	-	-
400	180	287	394	641	5	110	53-L94-33-0400	12.3	-	-
450	200	321	441	716	5	120	53-L94-33-0450	13.7	-	-
500	220	354	488	791	8	140	53-L94-33-0500	15.2	-	-
560	240	390	539	873	8	150	53-L94-33-0560	17.0	-	-
630	250	419	588	948	8	170	53-L94-33-0630	19.1	-	-

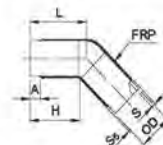
手工製品(Fabricated)

## PVDF(FRP COATED) 45° ELBOW

for butt welding  
molded from PVDF

對接45°彎頭 PVDF 披覆 FRP

DFP L45

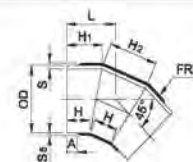


OD (mm)	H (mm)	L (mm)	S5 FRP (mm)	A (mm)	SDR33 ISO S16 PN10		SDR21 ISO S10 PN16	
					Code	S (mm)	Code	S (mm)
20	28	32.0	2	25	-	-	-	-
25	29	34.0	2	30	-	-	-	-
32	30	36.0	2	35	-	-	-	-
40	31	39.0	2	35	-	-	-	-
50	32	42.0	2	35	-	-	-	-
63	34	47.0	3	36	53-L45-33-0063	2.0	53-L45-21-0063	3.0
75	34	49.0	3	40	53-L45-33-0075	2.3	53-L45-21-0075	3.6
90	36	55.0	3	40	53-L45-33-0090	2.8	53-L45-21-0090	4.3
110	45	68.0	3	40	53-L45-33-0110	3.4	53-L45-21-0110	5.3
125	50	81.0	3	45	53-L45-33-0125	3.9	53-L45-21-0125	6.0
140	55	91.5	3	50	53-L45-33-0140	4.3	53-L45-21-0140	6.7
160	60	94.0	3	55	53-L45-33-0160	4.9	53-L45-21-0160	7.7
180	65	110.0	3	55	53-L45-33-0180	5.5	53-L45-21-0180	8.8
200	70	120.0	3	60	53-L45-33-0200	6.2	53-L45-21-0200	9.6
225	80	127.0	3	70	53-L45-33-0225	6.9	53-L45-21-0225	10.8
250	90	150.0	5	70	53-L45-33-0250	7.7	53-L45-21-0250	11.9
280	100	170.0	5	80	53-L45-33-0280	8.6	53-L45-21-0280	13.4
315	110	184.0	5	90	53-L45-33-0315	9.7	53-L45-21-0315	15.0

## PVDF(FRP COATED) 45° ELBOW

for butt welding  
molded from PVDF

手工對接45°彎頭 PVDF 披覆 FRP  
DFP L47



OD (mm)	H (mm)	H1 (mm)	H2 (mm)	L (mm)	S5 FRP (mm)	A (mm)	SDR33 ISO S16 PN10		SDR21 ISO S10 PN16	
							Code	S (mm)	Code	S (mm)
355	160	230	302	320	5	100	53-L47-33-0355	10.9	-	-
400	180	259	340	380	5	110	53-L47-33-0400	12.3	-	-
450	200	289	398	401	5	120	53-L47-33-0450	13.7	-	-
500	220	320	410	443	8	140	53-L47-33-0500	15.2	-	-
560	240	352	452	485	8	150	53-L47-33-0560	17.0	-	-
630	250	375	488	518	8	170	53-L47-33-0630	19.1	-	-

手工製品(Fabricated)





# PVDF/PVDF(FRP COATED) PIPE FITTING VALVE

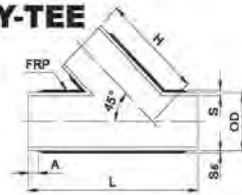


# PVDF/PVDF(FRP COATED) PIPE FITTING VALVE

## PVDF(FRP COATED) 45° Y-TEE

(Fabricated)  
for butt welding  
molded from PVDF

手工對接45°正Y型三通  
PVDF 披覆 FRP  
DFP TY1;TY2

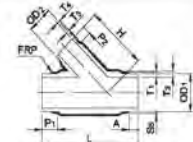


OD (mm)	H (mm)	L (mm)	S5 FRP (mm)	A (mm)	SDR33 ISO S16 PN10		SDR21 ISO S10 PN16	
					Code	S (mm)	Code	S (mm)
63	126	225	3	35	53-TY1-33-0063	2.0	53-TY1-21-0063	3.0
90	159	261	3	40	53-TY1-33-0090	2.8	53-TY1-21-0090	4.3
110	193	318	3	40	53-TY1-33-0110	3.4	53-TY1-21-0110	5.3
125	221	366	3	45	53-TY1-33-0125	3.9	53-TY1-21-0125	6.0
140	239	387	3	50	53-TY1-33-0140	4.3	53-TY1-21-0140	6.7
160	273	443	3	55	53-TY1-33-0160	4.9	53-TY1-21-0160	7.7
180	297	471	3	55	53-TY1-33-0180	5.5	53-TY1-21-0180	8.8
200	336	541	3	60	53-TY1-33-0200	6.2	53-TY1-21-0200	9.6
225	377	603	3	70	53-TY1-33-0225	6.9	53-TY1-21-0225	10.8
250	422	679	5	70	53-TY1-33-0250	7.7	53-TY1-21-0250	11.9
280	468	748	5	80	53-TY1-33-0280	8.6	53-TY1-21-0280	13.4
315	525	838	5	90	53-TY1-33-0315	9.7	53-TY1-21-0315	15.0
355	589	935	5	100	53-TY2-33-0355	10.9	-	-
400	663	1053	5	110	53-TY2-33-0400	12.3	-	-
450	743	1178	5	120	53-TY2-33-0450	13.7	-	-
500	824	1303	8	140	53-TY2-33-0500	15.2	-	-
560	916	1441	8	150	53-TY2-33-0560	17.0	-	-
630	1011	1567	8	170	53-TY2-33-0630	19.1	-	-

手工製品(Fabricated)

## PVDF (FRP COATED) REDUCED 45° Y-TEE

for butt welding molded from PVDF  
對接異徑45°Y型三通 PVDF 披覆 FRP  
DFP TY1

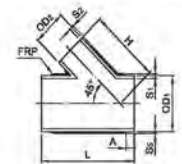


OD1 (mm)	OD2 (mm)	L (mm)	P1 (mm)	P2 (mm)	H (mm)	S5 FRP (mm)	A (mm)	SDR33 ISO S16 PN10				Weight (Kg/Pc.)	Code
								T1 (mm)	T2 (mm)	T3 (mm)	T4 (mm)		
90	63	242	53	31	153.53	3	40	5.1	11.1	3.6	7.8	0.593	53-TY1-33-090063
110	63	273	65	31	172.50	3	40	8.3	13.1	3.6	7.8	0.907	53-TY1-33-110063
160	110	374	84	65	265.05	3	55	9.1	15.8	6.3	13.0	2.520	53-TY1-33-160110

OD1 (mm)	OD2 (mm)	L (mm)	P1 (mm)	P2 (mm)	H (mm)	S5 FRP (mm)	A (mm)	SDR21 ISO S10 PN16				Weight (Kg/Pc.)	Code
								T1 (mm)	T2 (mm)	T3 (mm)	T4 (mm)		
90	63	242	53	31	153.53	3	40	8.2	14.2	6.0	10.0	0.786	53-TY1-21-090063
110	63	273	65	31	172.50	3	40	10.0	16.8	6.0	10.0	1.200	53-TY1-21-110063
110	90	316.25	65	53	207.35	3	40	10.0	16.8	8.5	14.2	1.858	53-TY1-21-110090
160	90	356.50	84	53	248.04	3	55	14.6	21.3	8.3	14.2	2.588	53-TY1-21-160090
160	110	374	84	65	265.05	3	55	14.6	21.3	10.4	16.7	2.522	53-TY1-21-160110

## PVDF (FRP COATED) REDUCED 45° Y-TEE

(fabricated)  
for butt welding  
molded from PVDF  
手工對接異徑45°Y型三通 PVDF 披覆 FRP  
DFP TY6



OD1/OD2 (mm)	H (mm)	L (mm)	B (mm)	S1 (mm)	S5 FRP (mm)	A (mm)	SDR33 S16 PN10		SDR21 S10 PN16	
							Code	S1/S2 (mm)	Code	S1/S2 (mm)
110-32	154	208	60	88	3	40	-	-	53-TY6-21-110032	5.3/2.4
110-40	158	219	60	99	3	40	-	-	53-TY6-21-110040	5.3/2.4
110-50	163	233	60	113	3	40	-	-	53-TY6-21-110050	5.3/3.0
110-75	175	269	60	148	3	40	53-TY6-33-110075	3.4/2.3	53-TY6-21-110075	5.3/3.6
125-40	178	246	70	106	3	45	-	-	53-TY6-21-125040	6.0/2.4
125-50	183	280	70	120	3	45	-	-	53-TY6-21-125050	6.0/3.0
125-63	200	279	70	139	3	45	53-TY6-33-125063	3.9/2.0	53-TY6-21-125063	6.0/3.0
125-75	196	296	70	156	3	45	53-TY6-33-125075	3.9/2.3	53-TY6-21-125075	6.0/3.6
125-90	199	317	70	177	3	45	53-TY6-33-125090	3.9/2.8	53-TY6-21-125090	6.0/4.3
125-110	213	345	70	205	3	45	53-TY6-33-125110	3.9/3.4	53-TY6-21-125110	6.0/5.3
140-50	194	280	70	120	3	50	-	-	53-TY6-21-140050	6.7/3.0
140-63	200	279	70	139	3	50	53-TY6-33-140063	4.3/2.0	53-TY6-21-140063	6.7/3.0
140-75	206	296	70	156	3	50	53-TY6-33-140075	4.3/2.3	53-TY6-21-140075	6.7/3.6
140-90	214	317	70	177	3	50	53-TY6-33-140090	4.3/2.8	53-TY6-21-140090	6.7/4.3
140-110	224	345	70	205	3	50	53-TY6-33-140110	4.3/3.4	53-TY6-21-140110	6.7/5.3
140-125	231	366	70	226	3	50	53-TY6-33-140125	4.3/3.9	53-TY6-21-140125	6.7/6.0



# PVDF/PVDF(FRP COATED) PIPE FITTING VALVE

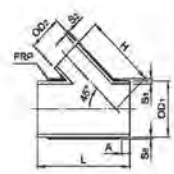


# PVDF/PVDF(FRP COATED) PIPE FITTING VALVE

## PVDF (FRP COATED) REDUCED 45° Y-TEE

(fabricated)  
for butt welding  
molded from PVDF

手工對接異徑45° Y型三通 PVDF 披覆 FRP  
DFP TY6

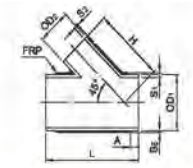


OD1/OD2 (mm)	H (mm)	L (mm)	S5 FRP (mm)	A (mm)	SDR33 ISO S16 PN10		SDR21 ISO S10 PN16	
					Code	S1/S2 (mm)	Code	S1/S2 (mm)
160-63	225	306	3	55	53-TY6-33-160063	4.9/2.0	53-TY6-21-160063	7.7/3.0
160-75	231	323	3	55	53-TY6-33-160075	4.9/2.3	53-TY6-21-160075	7.7/3.6
160-125	256	383	3	55	53-TY6-33-160125	4.9/3.9	53-TY6-21-160125	7.7/6.0
160-140	263	415	3	55	53-TY6-33-160140	4.9/4.3	53-TY6-21-160140	7.7/6.7
180-75	245	323	3	55	53-TY6-33-180075	5.5/2.3	53-TY6-21-180075	8.6/3.6
180-90	252	344	3	55	53-TY6-33-180090	5.5/2.8	53-TY6-21-180090	8.6/4.3
180-110	280	372	3	55	53-TY6-33-180110	5.5/3.4	53-TY6-21-180110	8.6/5.3
180-125	270	393	3	55	53-TY6-33-180125	5.5/3.9	53-TY6-21-180125	8.6/6.0
180-140	277	415	3	55	53-TY6-33-180140	5.5/4.3	53-TY6-21-180140	8.6/6.7
180-160	287	443	3	55	53-TY6-33-180160	5.5/4.9	53-TY6-21-180160	8.6/7.7
200-90	281	384	3	60	53-TY6-33-200090	6.2/2.8	53-TY6-21-200090	9.6/4.3
200-110	291	413	3	60	53-TY6-33-200110	6.2/3.4	53-TY6-21-200110	9.6/5.3
200-125	323	434	3	60	53-TY6-33-200125	6.2/3.9	53-TY6-21-200125	9.6/6.0
200-140	306	455	3	60	53-TY6-33-200140	6.2/4.3	53-TY6-21-200140	9.6/6.7
200-160	316	483	3	60	53-TY6-33-200160	6.2/4.9	53-TY6-21-200160	9.6/7.7
200-180	326	512	3	60	53-TY6-33-200180	6.2/5.5	53-TY6-21-200180	9.6/8.6
225-110	319	440	3	70	53-TY6-33-225110	6.9/3.4	53-TY6-21-225110	10.8/5.3
225-125	327	461	3	70	53-TY6-33-225125	6.9/3.9	53-TY6-21-225125	10.8/6.0
225-140	334	483	3	70	53-TY6-33-225140	6.9/4.3	53-TY6-21-225140	10.8/6.7
225-160	344	511	3	70	53-TY6-33-225160	6.9/4.9	53-TY6-21-225160	10.8/7.7
225-180	354	539	3	70	53-TY6-33-225180	6.9/5.5	53-TY6-21-225180	10.8/8.6
225-200	364	567	3	70	53-TY6-33-225200	6.9/6.2	53-TY6-21-225200	10.8/9.6
250-125	359	502	5	70	53-TY6-33-250125	7.7/3.9	53-TY6-21-250125	11.9/6.0
250-140	367	523	5	70	53-TY6-33-250140	7.7/4.3	53-TY6-21-250140	11.9/6.7
250-160	377	551	5	70	53-TY6-33-250160	7.7/4.9	53-TY6-21-250160	11.9/7.7
250-180	387	579	5	70	53-TY6-33-250180	7.7/5.5	53-TY6-21-250180	11.9/8.6
250-200	397	608	5	70	53-TY6-33-250200	7.7/6.2	53-TY6-21-250200	11.9/9.6
250-225	409	643	5	70	53-TY6-33-250225	7.7/6.9	53-TY6-21-250225	11.9/10.8
280-140	396	550	5	80	53-TY6-33-280140	8.6/4.3	53-TY6-21-280140	13.4/6.7
280-160	408	578	5	80	53-TY6-33-280160	8.6/4.9	53-TY6-21-280160	13.4/7.7
280-180	419	606	5	80	53-TY6-33-280180	8.6/5.5	53-TY6-21-280180	13.4/8.6
280-200	428	635	5	80	53-TY6-33-280200	8.6/6.2	53-TY6-21-280200	13.4/9.6
280-225	440	670	5	80	53-TY6-33-280225	8.6/6.9	53-TY6-21-280225	13.4/10.8
280-250	453	705	5	80	53-TY6-33-280250	8.6/7.7	53-TY6-21-280250	13.4/11.9

## PVDF (FRP COATED) REDUCED 45° Y-TEE

(fabricated)  
for butt welding molded from PVDF

手工對接異徑45° Y型三通 PVDF 披覆 FRP  
DFP TY6



OD1/OD2 (mm)	H (mm)	L (mm)	S5 FRP (mm)	A (mm)	SDR33 ISO S16 PN10		SDR21 ISO S10 PN16	
					Code	S1/S2 (mm)	Code	S1/S2 (mm)
315-160	448	619	5	90	53-TY6-33-315160	9.7/4.9	53-TY6-21-315160	15.0/7.7
315-180	458	647	5	90	53-TY6-33-315180	9.7/5.5	53-TY6-21-315180	15.0/8.6
315-200	466	676	5	90	53-TY6-33-315200	9.7/6.2	53-TY6-21-315200	15.0/9.6
315-225	480	711	5	90	53-TY6-33-315225	9.7/6.9	53-TY6-21-315225	15.0/10.8
315-250	493	746	5	90	53-TY6-33-315250	9.7/7.7	53-TY6-21-315250	15.0/11.9
315-280	508	789	5	90	53-TY6-33-315280	9.7/8.6	53-TY6-21-315280	15.0/13.4
355-180	501	688	5	100	53-TY6-33-355180	10.9/5.5	-	-
355-200	511	716	5	100	53-TY6-33-355200	10.9/6.2	-	-
355-225	521	751	5	100	53-TY6-33-355225	10.9/6.9	-	-
355-250	536	787	5	100	53-TY6-33-355250	10.9/7.7	-	-
355-280	551	829	5	100	53-TY6-33-355280	10.9/8.6	-	-
355-315	556	879	5	100	53-TY6-33-355315	10.9/9.7	-	-
400-200	563	770	5	110	53-TY6-33-400200	12.3/6.2	-	-
400-225	575	805	5	110	53-TY6-33-400225	12.3/6.9	-	-
400-250	581	841	5	110	53-TY6-33-400250	12.3/7.7	-	-
400-280	603	883	5	110	53-TY6-33-400280	12.3/8.6	-	-
400-315	620	933	5	110	53-TY6-33-400315	12.3/9.7	-	-
400-355	640	989	5	110	53-TY6-33-400355	12.3/10.9	-	-
450-225	631	860	5	120	53-TY6-33-450225	13.7/6.9	-	-
450-250	643	895	5	120	53-TY6-33-450250	13.7/7.7	-	-
450-280	658	937	5	120	53-TY6-33-450280	13.7/8.6	-	-
450-315	676	987	5	120	53-TY6-33-450315	13.7/9.7	-	-
450-355	696	1043	5	120	53-TY6-33-450355	13.7/10.9	-	-
450-400	718	1107	5	120	53-TY6-33-450400	13.7/12.3	-	-
500-250	699	949	8	140	53-TY6-33-500250	15.2/7.7	-	-
500-280	714	992	8	140	53-TY6-33-500280	15.2/8.6	-	-
500-315	735	1041	8	140	53-TY6-33-500315	15.2/9.7	-	-
500-355	751	1098	8	140	53-TY6-33-500355	15.2/10.9	-	-
500-400	774	1157	8	140	53-TY6-33-500400	15.2/12.3	-	-
500-450	799	1232	8	140	53-TY6-33-500450	15.2/13.7	-	-
560-280	776	1046	8	150	53-TY6-33-560280	17.0/8.6	-	-
560-315	793	1095	8	150	53-TY6-33-560315	17.0/9.7	-	-
560-355	821	1152	8	150	53-TY6-33-560355	17.0/10.9	-	-
560-400	836	1216	8	150	53-TY6-33-560400	17.0/12.3	-	-
560-450	861	1287	8	150	53-TY6-33-560450	17.0/13.7	-	-
560-500	886	1357	8	150	53-TY6-33-560500	17.0/15.2	-	-
630-315	853	1122	8	170	53-TY6-33-630315	19.1/7.7	-	-
630-355	873	1179	8	170	53-TY6-33-630355	19.1/10.9	-	-
630-400	895	1242	8	170	53-TY6-33-630400	19.1/12.3	-	-
630-450	920	1313	8	170	53-TY6-33-630450	19.1/13.7	-	-
630-500	945	1384	8	170	53-TY6-33-630500	19.1/15.2	-	-
630-560	975	1468	8	170	53-TY6-33-630560	19.1/17.0	-	-





# PVDF/PVDF(FRP COATED) PIPE FITTING VALVE

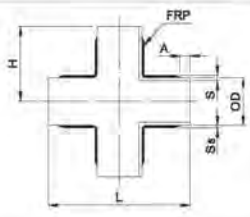


# PVDF/PVDF(FRP COATED) PIPE FITTING VALVE

## PVDF(FRP COATED)CROSS

(Fabricated)  
for butt welding  
molded from PVDF

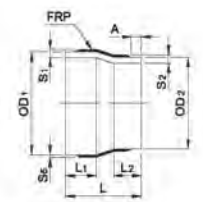
手工對接四通 PVDF 披覆 FRP  
DFP TZ1



## PVDF(FRP COATED) REDUCER

concentric, elongated  
for butt welding  
molded from PVDF

手工對接大小頭 PVDF 披覆 FRP  
DFP RC1



OD (mm)	H (mm)	L (mm)	S5 FRP (mm)	A (mm)	SDR33 ISO S16 PN10		SDR21 ISO S10 PN16	
					Code	S (mm)	Code	S (mm)
63	81.5	163	3	35	53-TZ1-33-0063	2.0	53-TZ1-21-0063	3.0
90	95.0	190	3	40	53-TZ1-33-0090	2.8	53-TZ1-21-0090	4.3
110	115.0	230	3	40	53-TZ1-33-0110	3.4	53-TZ1-21-0110	5.3
125	132.5	265	3	45	53-TZ1-33-0125	3.9	53-TZ1-21-0125	6.0
140	140.0	280	3	50	53-TZ1-33-0140	4.3	53-TZ1-21-0140	6.7
160	160.0	320	3	55	53-TZ1-33-0160	4.9	53-TZ1-21-0160	7.7
180	170.0	340	3	55	53-TZ1-33-0180	5.5	53-TZ1-21-0180	8.6
200	195.0	390	3	60	53-TZ1-33-0200	6.2	53-TZ1-21-0200	9.6
225	217.5	435	3	70	53-TZ1-33-0225	6.9	53-TZ1-21-0225	10.8
250	245.0	490	5	70	53-TZ1-33-0250	7.7	53-TZ1-21-0250	11.9
280	270.0	540	5	80	53-TZ1-33-0280	8.6	53-TZ1-21-0280	13.4
315	302.5	605	5	90	53-TZ1-33-0315	9.7	53-TZ1-21-0315	15.0
355	337.5	675	5	100	53-TZ1-33-0355	10.9	-	-
400	380.0	760	5	110	53-TZ1-33-0400	12.3	-	-
450	425.0	850	5	120	53-TZ1-33-0450	13.7	-	-
500	470.0	940	8	140	53-TZ1-33-0500	15.2	-	-
580	520.0	1040	8	150	53-TZ1-33-0580	17.0	-	-
630	565.0	1130	8	170	53-TZ1-33-0630	19.1	-	-

手工製品 (Fabricated)

OD1/OD2 (mm)	L (mm)	L1 (mm)	L2 (mm)	S5 FRP (mm)	A (mm)	SDR33 ISO S16 PN10		SDR21 ISO S10 PN16	
						Code	S1/S2 (mm)	Code	S1/S2 (mm)
25-20	50	20	20	2	25	-	-	53-RC1-21-025020	1.9/1.9
32-20	50	20	20	2	25	-	-	53-RC1-21-032020	2.4/1.9
32-25	50	20	20	2	30	-	-	53-RC1-21-032025	2.4/1.8
40-20	55	20	20	2	25	-	-	53-RC1-21-040020	2.4/1.9
40-25	55	20	20	2	30	-	-	53-RC1-21-040025	2.4/1.9
40-32	55	20	20	2	35	-	-	53-RC1-21-040032	2.4/2.4
50-20	60	24	20	2	25	-	-	53-RC1-21-050020	3.0/1.9
50-25	60	24	20	2	30	-	-	53-RC1-21-050025	3.0/1.9
50-32	60	24	20	2	35	-	-	53-RC1-21-050032	3.0/2.4
50-40	60	24	20	2	35	-	-	53-RC1-21-050040	3.0/2.4
63-25	65	25	20	3	30	-	-	53-RC1-21-063025	3.0/1.9
63-32	65	25	22	3	35	-	-	53-RC1-21-063032	3.0/2.4
63-40	65	25	22	3	35	-	-	53-RC1-21-063040	3.0/2.4
63-50	65	25	22	3	35	-	-	53-RC1-21-063050	3.0/3.0
75-40	68	25	24	3	35	-	-	53-RC1-21-075040	3.6/2.4
75-50	68	25	24	3	35	-	-	53-RC1-21-075050	3.6/3.0
75-63	68	25	24	3	35	-	-	53-RC1-21-075063	3.6/3.0
90-50	75	30	26	3	35	-	-	53-RC1-21-090050	4.3/3.0
90-63	75	30	26	3	35	53-RC1-33-090063	2.8/2.0	53-RC1-21-090063	4.3/3.0
90-75	75	30	26	3	40	53-RC1-33-090075	2.8/2.3	53-RC1-21-090075	4.3/3.6
110-63	90	35	30	3	35	53-RC1-33-110063	3.4/2.0	53-RC1-21-110063	5.3/3.0
110-75	90	35	30	3	40	53-RC1-33-110075	3.4/2.3	53-RC1-21-110075	5.3/3.6
110-90	90	35	30	3	40	53-RC1-33-110090	3.4/2.8	53-RC1-21-110090	5.3/4.3
125-110	100	40	35	3	40	53-RC1-33-125110	3.9/3.4	53-RC1-21-125110	6.0/5.3
140-125	110	45	40	3	45	53-RC1-33-140125	4.3/3.9	53-RC1-21-140125	6.7/6.0
160-110	130	60	40	3	40	53-RC1-33-160110	4.9/3.4	53-RC1-21-160110	7.7/5.3
160-140	130	60	40	3	50	53-RC1-33-160140	4.9/4.3	53-RC1-21-160140	7.7/6.7
180-180	130	60	40	3	55	53-RC1-33-180180	5.5/4.9	53-RC1-21-180180	8.6/7.7
200-160	140	60	40	3	55	53-RC1-33-200160	6.2/4.9	53-RC1-21-200160	9.6/7.7
225-160	150	60	40	3	55	53-RC1-33-225160	6.9/4.9	53-RC1-21-225160	10.8/7.7
225-200	150	60	50	3	60	53-RC1-33-225200	6.9/6.2	53-RC1-21-225200	10.8/9.6
250-225	170	70	60	5	70	53-RC1-33-250225	7.7/6.9	53-RC1-21-250225	11.9/10.8
260-260	180	80	60	5	70	53-RC1-33-260260	8.6/7.7	53-RC1-21-260260	13.4/11.9
315-280	220	90	80	5	80	53-RC1-33-315280	9.7/8.6	53-RC1-21-315280	15.0/13.4



# PVDF/PVDF(FRP COATED) PIPE FITTING VALVE



# PVDF/PVDF(FRP COATED) PIPE FITTING VALVE

## PVDF(FRP COATED)REDUCER

(Fabricated)  
concentric, elongated  
for butt welding  
molded from PVDF

手工對接大小頭 PVDF 披覆 FRP  
DFP RC1

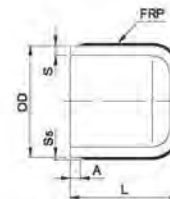


OD1/OD2 (mm)	L (mm)	L1 (mm)	L2 (mm)	S5 FRP (mm)	A (mm)	SDR33 ISO 516 PN10	
						Code	S1/S2 (mm)
355-180	318	180	110	5	55	53-RC1-33-355180	10.9/5.5
355-200	328	180	120	5	60	53-RC1-33-355200	10.9/6.2
355-225	328	180	120	5	70	53-RC1-33-355225	10.9/6.9
355-250	338	180	130	5	80	53-RC1-33-355250	10.9/7.7
355-280	358	180	150	5	80	53-RC1-33-355280	10.9/8.6
355-315	368	180	160	5	90	53-RC1-33-355315	10.9/9.7
400-200	358	210	120	5	80	53-RC1-33-400200	12.3/6.2
400-225	358	210	120	5	70	53-RC1-33-400225	12.3/6.9
400-250	368	210	130	5	70	53-RC1-33-400250	12.3/7.7
400-280	388	210	150	5	80	53-RC1-33-400280	12.3/8.6
400-315	388	210	160	5	90	53-RC1-33-400315	12.3/9.7
400-355	418	210	180	5	100	53-RC1-33-400355	12.3/10.9
450-225	398	250	120	5	70	53-RC1-33-450225	13.7/6.9
450-250	408	250	130	5	70	53-RC1-33-450250	13.7/7.7
450-280	428	250	150	5	80	53-RC1-33-450280	13.7/8.6
450-315	438	250	160	5	90	53-RC1-33-450315	13.7/9.7
450-355	458	250	180	5	100	53-RC1-33-450355	13.7/10.9
450-400	488	250	210	5	110	53-RC1-33-450400	13.7/12.3
500-250	438	280	130	8	70	53-RC1-33-500250	15.2/7.7
500-280	458	280	150	8	80	53-RC1-33-500280	15.2/8.6
500-315	468	280	160	8	90	53-RC1-33-500315	15.2/9.7
500-355	488	280	180	8	100	53-RC1-33-500355	15.2/10.9
500-400	518	280	210	8	110	53-RC1-33-500400	15.2/12.3
500-450	558	280	250	8	120	53-RC1-33-500450	15.2/13.7
580-280	478	300	150	8	80	53-RC1-33-580280	17.0/8.6
580-315	488	300	160	8	90	53-RC1-33-580315	17.0/9.7
580-355	508	300	180	8	100	53-RC1-33-580355	17.0/10.9
580-400	538	300	210	8	110	53-RC1-33-580400	17.0/12.3
580-450	578	300	250	8	120	53-RC1-33-580450	17.0/13.7
580-500	608	300	280	8	140	53-RC1-33-580500	17.0/15.2
630-315	538	350	160	8	90	53-RC1-33-630315	19.1/9.7
630-355	558	350	180	8	100	53-RC1-33-630355	19.1/10.9
630-400	588	350	210	8	110	53-RC1-33-630400	19.1/12.3
630-450	628	350	250	8	120	53-RC1-33-630450	19.1/13.7
630-500	658	350	280	8	140	53-RC1-33-630500	19.1/15.2
630-580	678	350	300	8	150	53-RC1-33-630580	19.1/17.0

## PVDF(FRP COATED) CAP

elongated,  
for butt welding  
molded from PVDF

對接管帽 PVDF 披覆 FRP  
DFP CP1



OD (mm)	L1 (mm)	L (mm)	S5 FRP (mm)	A (mm)	SDR33 ISO 516 PN10		SDR21 ISO 510 PN16	
					Code	S (mm)	Code	S (mm)
20	30.0	42.0	2	25	-	-	53-CP1-21-0020	1.9
25	35.0	50.0	2	30	-	-	53-CP1-21-0025	1.9
32	40.0	55.0	2	35	-	-	53-CP1-21-0032	2.4
40	40.0	60.0	2	35	-	-	53-CP1-21-0040	2.4
50	40.0	60.0	2	35	-	-	53-CP1-21-0050	3.0
63	50.0	70.0	3	35	53-CP1-33-0063	2.0	53-CP1-21-0063	3.0
75	55.0	80.0	3	40	53-CP1-33-0075	2.3	53-CP1-21-0075	3.6
90	60.0	90.0	3	40	53-CP1-33-0090	2.8	53-CP1-21-0090	4.3
110	65.0	100.0	3	40	53-CP1-33-0110	3.4	53-CP1-21-0110	5.3
125	70.0	110.0	3	45	53-CP1-33-0125	3.9	53-CP1-21-0125	6.0
140	106.0	142.0	3	50	53-CP1-33-0140	4.3	53-CP1-21-0140	6.7
160	118.5	167.0	3	55	53-CP1-33-0160	4.9	53-CP1-21-0160	7.7
180	141.0	191.0	3	55	53-CP1-33-0180	5.5	53-CP1-21-0180	8.6
200	127.0	181.0	3	60	53-CP1-33-0200	6.2	53-CP1-21-0200	9.6
225	141.5	210.0	3	70	53-CP1-33-0225	6.9	53-CP1-21-0225	10.8
250	152.0	230.0	5	70	53-CP1-33-0250	7.7	53-CP1-21-0250	11.9
280	162.0	257.0	5	80	53-CP1-33-0280	8.6	53-CP1-21-0280	13.4
315	180.0	282.0	5	90	53-CP1-33-0315	9.7	53-CP1-21-0315	15.0
355	75.0	130.0	5	100	53-CP3-33-0355	10.9	-	-
400	75.0	130.0	5	110	53-CP3-33-0400	12.3	-	-
450	75.0	130.0	5	120	53-CP3-33-0450	13.7	-	-
500	75.0	130.0	8	140	53-CP3-33-0500	15.2	-	-
580	75.0	130.0	8	150	53-CP3-33-0580	17.0	-	-
630	100.0	160.0	8	170	53-CP3-33-0630	19.1	-	-





# PVDF/PVDF(FRP COATED) PIPE FITTING VALVE

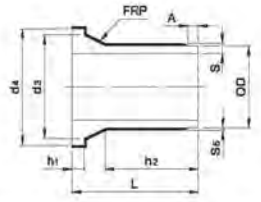


# PVDF/PVDF(FRP COATED) PIPE FITTING VALVE

## PVDF(FRP COATED) STUB FLANGE

for butt welding  
molded from PVDF  
coated with FRP

對接中間法蘭 PVDF 披覆 FRP  
DFP FT1



OD (mm)	d <sub>3</sub> (mm)	d <sub>4</sub> (mm)	L (mm)	h <sub>2</sub> (mm)	FRP (mm)	A (mm)	SDR33 ISO S16 PN10			SDR21 ISO S10 PN16		
							Code	s (mm)	h <sub>1</sub> (mm)	Code	s (mm)	h <sub>1</sub> (mm)
20	28	45	50	29	2	25	-	-	-	53-FT1-21-0020	1.9	7
25	34	58	50	29	2	30	-	-	-	53-FT1-21-0025	1.9	9
32	41	68	50	26	2	35	-	-	-	53-FT1-21-0032	2.4	10
40	51	78	50	23	2	36	-	-	-	53-FT1-21-0040	2.4	11
50	61	88	50	23	2	35	-	-	-	53-FT1-21-0050	3.0	12
63	73.8	102	50	19	3	36	53-FT1-33-0063	2.0	14	53-FT1-21-0063	3.0	14
75	87.5	122	50	19	3	40	53-FT1-33-0075	2.3	16	53-FT1-21-0075	3.6	16
90	104	138	80	41	3	40	53-FT1-33-0090	2.8	17	53-FT1-21-0090	4.3	17
110	128.5	168	80	38	3	40	53-FT1-33-0110	3.4	18	53-FT1-21-0110	5.3	18
125	136	168	175	102	3	45	53-FT1-33-0125	3.9	25.5	53-FT1-21-0125	6.0	25.5
140	155	191	197.5	129.7	3	50	53-FT1-33-0140	4.3	27.4	53-FT1-21-0140	6.7	27.4
160	175.8	211.8	160.5	110	3	55	53-FT1-33-0180	4.9	26.2	53-FT1-21-0180	7.7	26.2
180	188	217	180	127	3	55	53-FT1-33-0180	5.5	26.5	53-FT1-21-0180	8.6	26.5
200	229	268	213	144	3	60	53-FT1-33-0200	6.2	31.5	53-FT1-21-0200	9.6	31.5
225	237	288	213	144	5	70	53-FT1-33-0225	6.9	33	53-FT1-21-0225	10.8	33
250	284	320	273	206	5	70	53-FT1-33-0250	7.7	34	53-FT1-21-0250	11.9	34
280	292	320	375	303.5	5	80	53-FT1-33-0280	8.6	32	53-FT1-21-0280	13.4	32
315	334	371	375	303.5	5	90	53-FT1-33-0315	9.7	35	53-FT1-21-0315	15.0	35
355	373	430	175	-	5	100	53-FT1-33-0355	10.9	40	53-FT1-21-0355	16.9	40
400	427	482	175	-	5	110	53-FT1-33-0400	12.3	40	53-FT1-21-0400	19.0	400
450	514	585	180	-	5	120	53-FT1-33-0450	13.7	50	53-FT1-21-0450	21.4	50
500	530	585	180	-	8	140	53-FT1-33-0500	15.2	50	53-FT1-21-0500	23.8	50
560	615	685	180	-	8	150	53-FT1-33-0580	17.0	55	53-FT1-21-0580	26.7	55
630	642	685	200	-	8	170	53-FT1-33-0630	18.1	55	53-FT1-21-0630	30.0	556

Pipes support distances  
管支撐距離

Support distances depend on the strength properties of the pipe material, on the pipe dimensions, weight of flow medium, operating temperature and arrangement of the pipes.

管子的支撐距離是依據管材的強度特質，管子口徑，流體重量，使用溫度，及管子的佈置。

The support distances given in the table refer to a flow medium with a density of 1g/cm and to horizontally laid pipes (in accordance to DVS guideline 2210, Part 1)

表中的支撐距離是依據DVS 2210, Part 1 的流體比重1g/cm及管子平行放置。

On calculating the support distances, a maximum deflection of L/500 to L/750 between the two pipe clips has been taken as basis.

在計算支撐距離時，兩管夾的最大偏斜為L/500-L/750做基準。

1). Further conversion in concern to the other pressure rates for water, as described below, are not necessary.

1). 進一步有關其他水壓等如下表所示的轉換因素並不需要。

Conversion factors for support distances

(acc DVS 2210, table 18) For other SDR-rows, materials and fluids, conversion factors in the table below can be applied.

(new support distance L=L x f x f)

支撐距離的轉換因素：  
(依據DVS 2210 table 18)，其他SDR規格，材質，流體的轉換系數可適用右表)

## INSTALLATION 安裝

Support distance for pipes out of PVDF SDR 33  
支撐距離為對PVDF SDR33管標準

Pipe dimension (mm)	max. support distances(mm) 最大支撐距離					
	20' C	40' C	60' C	80' C	100' C	120' C
16(3/8")	725	650	570	500	450	400
20(1/2")	850	750	700	600	500	450
25(3/4")	950	850	750	675	600	500
32(1")	1100	1000	900	800	700	600
40(1-1/4")	1200	1100	1000	900	750	650
50(1-1/2")	1400	1300	1150	1000	900	750
63(2")	1400	1300	1200	1100	950	800
75(2-1/2")	1500	1400	1300	1200	1050	850
90(3")	1600	1500	1400	1300	1100	950
110(4")	1800	1700	1550	1450	1250	1100
125(4-1/2")	1900	1800	1650	1500	1350	1200
140(5")	2000	1900	1750	1600	1450	1250
160(6")	2150	2050	1850	1700	1550	1350
180(7")	2300	2150	1950	1800	1600	1400
200(8")	2400	2250	2100	1900	1700	1500
225(9")	2550	2400	2200	2000	1800	1600
250(10")	2650	2500	2300	2100	1900	1700
280(11")	2850	2650	2450	2250	2000	1800
315(12")	3000	2850	2600	2400	2150	1900
355(13")	3200	3000	2750	2500	2250	2000
400(14")	3400	3200	2950	2650	2400	2100

Material 材質	SDR	Wall thickness 壁厚	Fluid 液體			
			Gases 氣體	Water 水	Other 其他	
			Density (g/cm <sup>3</sup> ) 比重			
Conversion factor 轉換系數			F <sub>2</sub>	F <sub>1</sub>		
PVDF	33	1.00	1.48	1.0	0.96	0.92
	21	1.08	1.38			
	17	1.12	1.31			